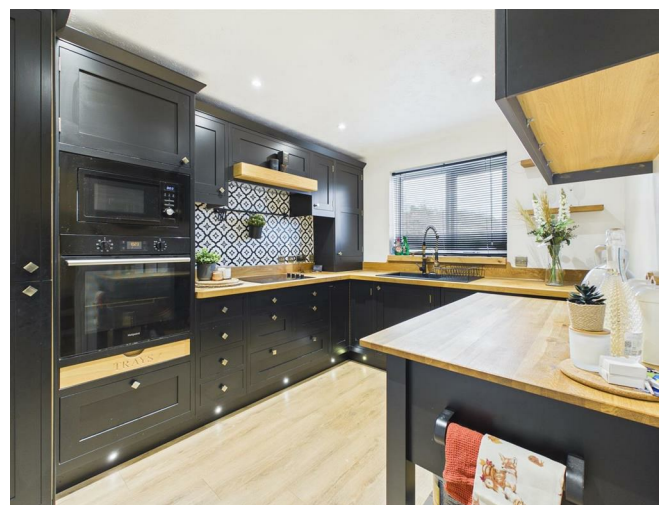


5 Ryknild Way, Morecambe, LA3 3BW



£215,000



Head Office: 83 Bowerham Road Lancaster LA1 4AQ
T 01524 548888 E enquiries@mightyhouse.co.uk W www.mightyhouse.co.uk



Mighty House is a trading name of P&PC Surveyors Limited. Registered Office: 70 Daisy Hill, Dewsbury, WF13 1LS. Company no: 06498054

Beautifully Presented Three-Bedroom Semi-Detached Home with an Exceptional Garden!

Welcome to 5 Ryknild Way, situated on the popular Fairfield Estate, this is a stylish and very well-presented three-bedroom semi-detached home, perfect for first-time buyers or growing families.

From the moment you step inside, the home feels bright and welcoming. The modern kitchen is a real highlight, featuring integrated appliances and a sleek breakfast bar. The spacious lounge flows through to a lovely sun room, where patio doors open directly onto the garden, creating a wonderful space for relaxing or entertaining. A convenient downstairs WC adds further practicality.

Upstairs, there are three bedrooms, including a main bedroom with an en suite, along with a family bathroom.

Externally, the property truly stands out. The huge rear garden offers fantastic outdoor space for children, pets, or summer gatherings, while the driveway provides parking for up to three vehicles.

Well-maintained and beautifully presented throughout, this is a home you can move straight into and enjoy from day one.

Entrance Hallway



Laminate flooring, stairs to first floor, radiator, under stairs storage cupboard.

W.C.



Laminate flooring, partially tiled walls, small radiator, wash hand basin and W.C.

Kitchen



Laminate flooring, radiator, large double glazed window to front, range of matching wall and base units, integrated fridge/freezer, integrated washing machine, Beko electric hob, extractor hood, Hot Point electric oven and integrated microwave, glow worm boiler, breakfast bar.

Lounge



Tiled floor, radiator, double glazed sliding doors to sun room, media wall with shelving and electric fire.

Sun Room

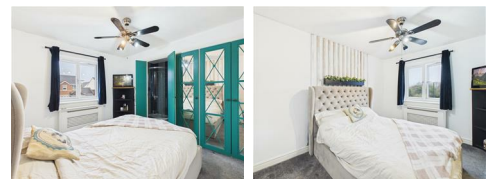


Laminate flooring, large double glazed windows, patio doors to garden.

First Floor Landing

Loft access, carpeted.

Bedroom One



Carpeted, large double glazed window to front, built in wardrobes.

En-Suite



Vinyl flooring, small frosted double glazed window, large storage cupboard, corner thermostatic shower, partially tiled walls, heated towel rail, wash hand basin and W.C.

Bathroom



Laminate flooring, bath with overhead shower, small frosted double glazed window, partially tiled walls, heated towel rail, sink and W.C.

Bedroom Two



Carpeted, radiator, double glazed window to rear.

Outside



Large lawn with raised decking area, storage shed, parking for up to 3 cars.

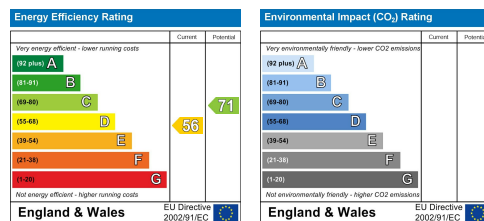
Useful Information

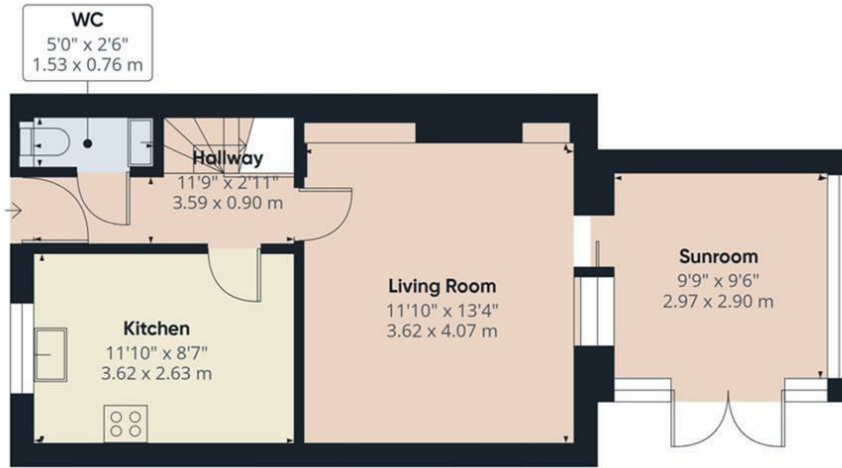
Tenure Freehold
Council Tax Band (C) - £2,104.19

Bedroom Three



Laminate flooring, fitted wardrobes and dressing table, radiator, double glazed window to rear.





Ground Floor



Floor 1



Approximate total area⁽¹⁾
745 ft²
69.3 m²

(1) Excluding balconies and terraces

Calculations reference the RICS IPMS 3C standard. Measurements are approximate and not to scale. This floor plan is intended for illustration only.

GIRAFFE360



Head Office: 83 Bowerham Road Lancaster LA1 4AQ
T 01524 548888 E enquiries@mightyhouse.co.uk W www.mightyhouse.co.uk



Mighty House is a trading name of P&PC Surveyors Limited. Registered Office: 70 Daisy Hill, Dewsbury, WF13 1LS. Company no: 06498054