



Fordwych Road, NW2

£450,000

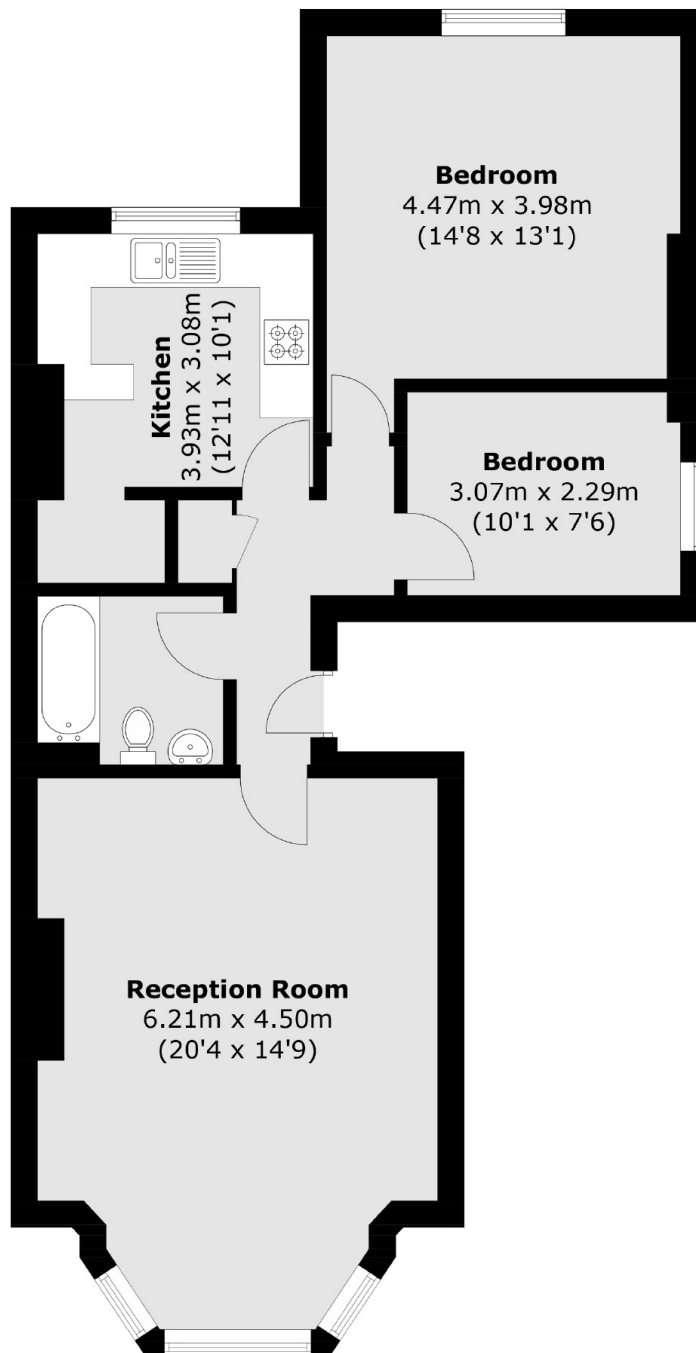
A raised ground floor, two double bedroom period conversion measuring in excess of 750 sq ft. Offering a large reception room, a separate kitchen and a bathroom. The property comes with no onward chain.

Fordwych Road is ideally located within easy reach of the ever-popular West Hampstead, with its boutique cafés, restaurants and other local amenities. Transport links are easily available, with numerous bus routes and underground stations close by.

Features

- Two Double Bedrooms
- Separate Kitchen
- Large Reception Room
- Period Conversion
- Leasehold
- No Onward Chain

Fordwych Road,
London, NW2



Total area (approx.): 69.9 sq. m (752.4 sq. ft)