



# 23 Barons Mead, Chippenham, SN14 0LN

GOODMAN WARREN BECK

64 Market Place  
 Chippenham, Wiltshire SN15 3HG  
 Tel 01249 444449 | Fax 01249 448989  
 Email info@goodmanwb.co.uk

£260,000

A two bedroom semi detached bungalow located within a quiet area on the west side of Chippenham. The property offers spacious accommodation to include entrance hall, kitchen with fitted oven and hob, conservatory, sitting room with feature fireplace, two double bedrooms and a wet room. The front and rear gardens are both designed for ease of maintenance and there is a driveway immediately to the side of the property. Additional benefits include gas central heating, uPVC double glazing and no onward chain.

## Situation

The property is situated on the western side of Chippenham and is conveniently located within walking distance of primary schools and two highly regarded senior schools. Local shops are close to hand along with superstores. There are numerous other amenities in the town centre along with a mainline rail station. M4 J.17 is c.4 Miles north of the town providing swift access to Swindon, Bristol and Bath.

## Accommodation Comprising:

uPVC obscure double glazed door and side panel to:

## Entrance Hall

Storage cupboard housing boiler. Radiator. Open to Kitchen. Door to Sitting Room.

## Sitting Room

uPVC double glazed window to front. Wood laminate flooring. Feature fireplace with gas fire, marble hearth and insert and wooden surround. Door to Inner Hall.

## Kitchen

uPVC double glazed door and window to side. Fitted with a range of matching wall and base units comprising cupboards and drawers. Worksurfaces with tiled splashbacks. Stainless steel sink unit with chrome mixer tap. Pantry cupboard. Built-in oven and hob with extractor over. Space and plumbing for automatic washing machine.

## Conservatory

uPVC double glazed windows to front, side and rear. UPVC double glazed door to rear. Power. Water tap.

## Inner Hall

Doors to both bedrooms and wet room. Access to roof space.

## Bedroom One

uPVC double glazed window to rear. Radiator.

## Bedroom Two

uPVC double glazed window to rear. Radiator.

## Outside

## Wet Room

uPVC obscure double glazed window to side. Chrome ladder radiator. Close coupled WC. Wall hung wash basin. Shower. Aqua panels to principal areas.

## Front Garden

Laid to gravel. Outside light.

## Rear Garden

Laid to gravel. Area of hand standing. Steps up to Conservatory. Timber shed. Timber fencing.

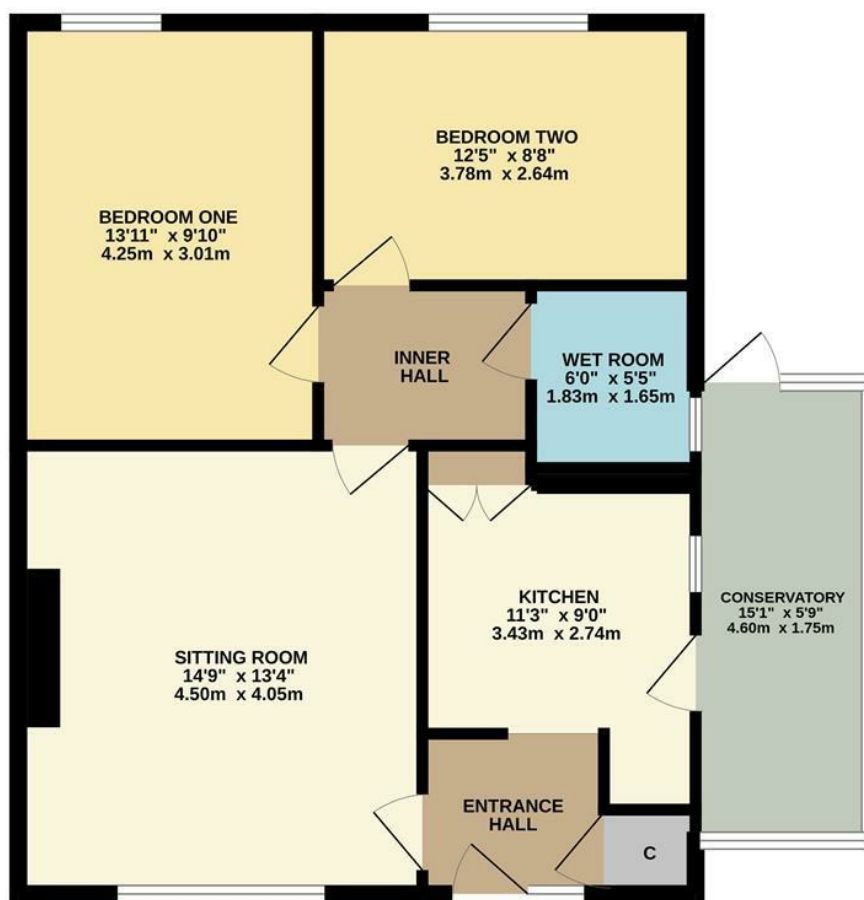
## Parking

Driveway parking to the side of the property.

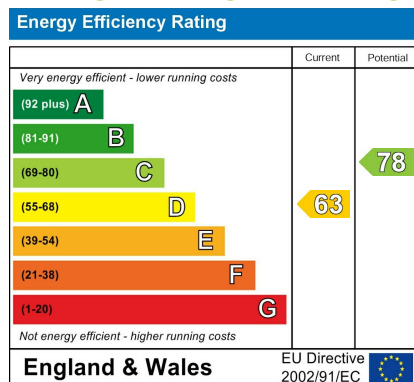
## Directions

From the town centre proceed through the railway arches leading out of town along the one way system into Marshfield Road which leads into Bristol Road. At the mini roundabouts turn left into Hungerdown Lane and then take the second right into Lords Mead by The Kingfisher public house. Take the second turning into Barons Mead, follow the road to the end and the property can be found on the right hand side.

GROUND FLOOR  
 718 sq.ft. (66.7 sq.m.) approx.



## ENERGY PERFORMANCE GRAPHS



Council Tax Band: B

Tenure: Freehold

TOTAL FLOOR AREA: 718 sq.ft. (66.7 sq.m.) approx.  
 Whilst every attempt has been made to ensure the accuracy of the floorplan contained here, measurements of doors, windows, rooms and any other items are approximate and no responsibility is taken for any error, omission or mis-statement. This plan is for illustrative purposes only and should be used as such by any prospective purchaser. The services, systems and appliances shown have not been tested and no guarantee as to their operability or efficiency can be given.  
 Made with Metropix ©2020.

DISCLAIMER: These particulars, whilst believed to be accurate are set out as a general outline only for guidance and do not constitute any part of an offer or contract. Intending purchasers should not rely on them as statements of representation of fact, but must satisfy themselves by inspection or otherwise as to their accuracy. No person in this firm's employment has the authority to make or give any representation or warranty in respect to this property. We have not carried out a detailed survey not tested the services, appliances and specific fittings. All measurements and distances are approximate only. Room sizes should not be relied upon for carpets and furnishings. References to the tenure of the property are based on information supplied by the seller. The agent has not had sight of the title documents. A buyer is advised to obtain verification from their solicitor. Your home is at risk if you do not keep up repayments on a mortgage or other load secured on it. Floor plans (not to scale, for illustrative purposes only)