



St. Thomass Road, Hastings TN34 3LG

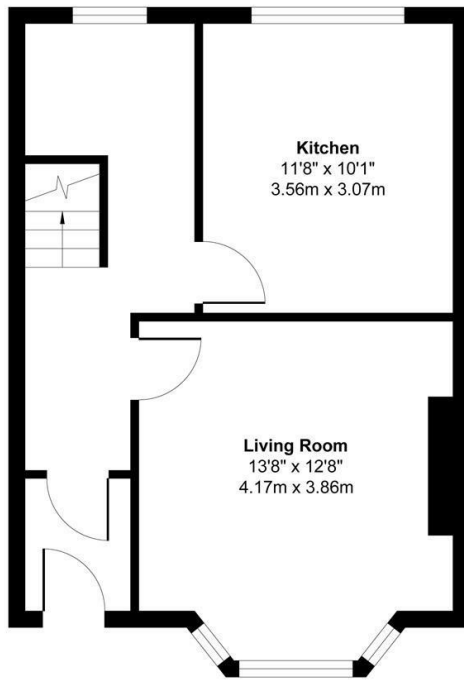
Offers in excess of £220,000



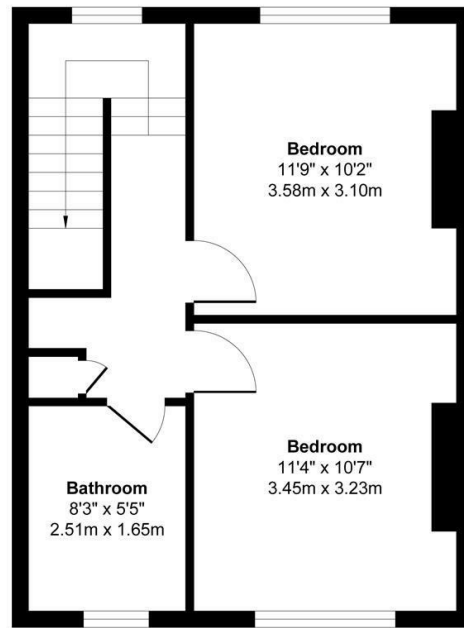
A beautifully presented two bedroom, TWO STOREY MAISONETTE situated in a sought after location on the West Hill, within easy walking distance of a local shop and Ore railway station. It's equidistant to both Hastings Old Town and Town Centre offering shopping and leisure facilities, access to the beach and a second mainline railway station benefitting from connections to London stations. Entry is via a PRIVATE ENTRANCE where the accommodation enjoys an ABUNDANCE OF ORIGINAL FEATURES including exposed floorboards which flow throughout, it's arranged as a BAY FRONTED LIVING ROOM with bespoke shutters fitted to the lower portion of the window, there is a separate EAT-IN KITCHEN and a study area in the hallway. The kitchen is fitted with stylish units and enjoys a picturesque rear aspect. The upper floor houses TWO WELL-PROPORTIONED DOUBLE BEDROOMS together with a modern shower room. From the rear of the property you can enjoy FAR REACHING VIEWS across the neighbouring rooftops.

St Thomas's Rd

Approximate Gross Internal Floor Area
830 sq. ft / 77.10 sq. m



GROUND FLOOR



FIRST FLOOR

