



Price
£450,000

Freehold

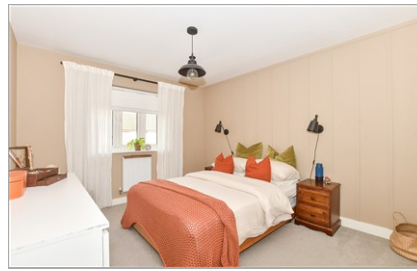
3x  2x  1x 

**Woodfox Way,
Haywards Heath, West
Sussex, RH16**

OVER 60?

Secure this property
for up to **59% less!**

cubitt & west
Helping you move forwards



Main features

- No forward chain
- Remainder of NHBC Guarantee
- All bedrooms are a good size
- En-suite shower room
- Off road parking
- Ideal for first time buyers

Accommodation

GROUND FLOOR

- Hallway
- Cloakroom
- Lounge: 17'0 x 11'6 (5.19m x 3.51m)
- Kitchen/Dining Room: 18'10 x 10'9 (5.74m x 3.28m)

FIRST FLOOR

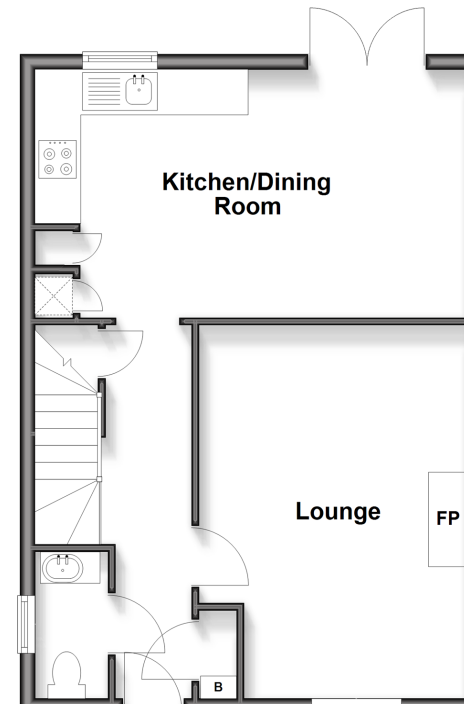
- Landing
- Bedroom 1: 14'9 x 10'3 (4.50m x 3.13m)
- En-Suite Shower Room
- Bedroom 2: 11'1 x 10'0 (3.38m x 3.05m)
- Bedroom 3: 11'1 x 8'4 (3.38m x 2.54m)
- Bathroom

OUTSIDE

- Rear Garden
- Off Road Parking

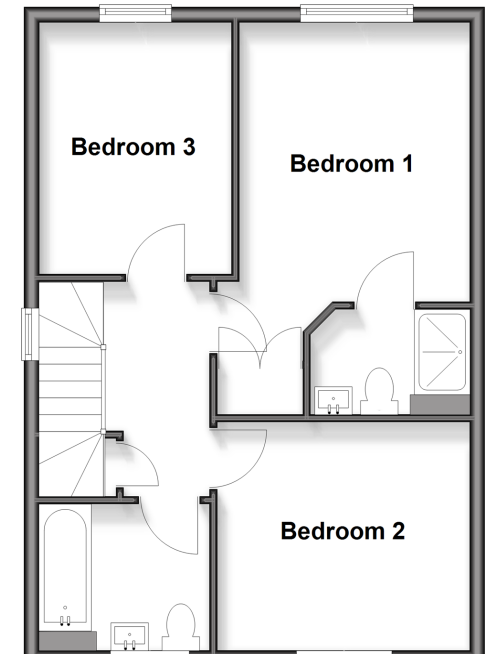
Ground Floor

Approx. 47.9 sq. metres (515.4 sq. feet)



First Floor

Approx. 47.9 sq. metres (515.4 sq. feet)



Call Haywards Heath - 01444 411132 ■ cubittandwest.co.uk

■ Legal advice should be taken to verify fixtures/fittings, planning, alterations and/or lease details
 ■ Through a Homewise Home For Life Plan people aged 60+ can secure this property for up to 59% less, by purchasing a Lifetime Lease

■ Appliances & services are untested, dimensions are approximate and floor plans are not to scale



28177915/20260120/DDA/DD