

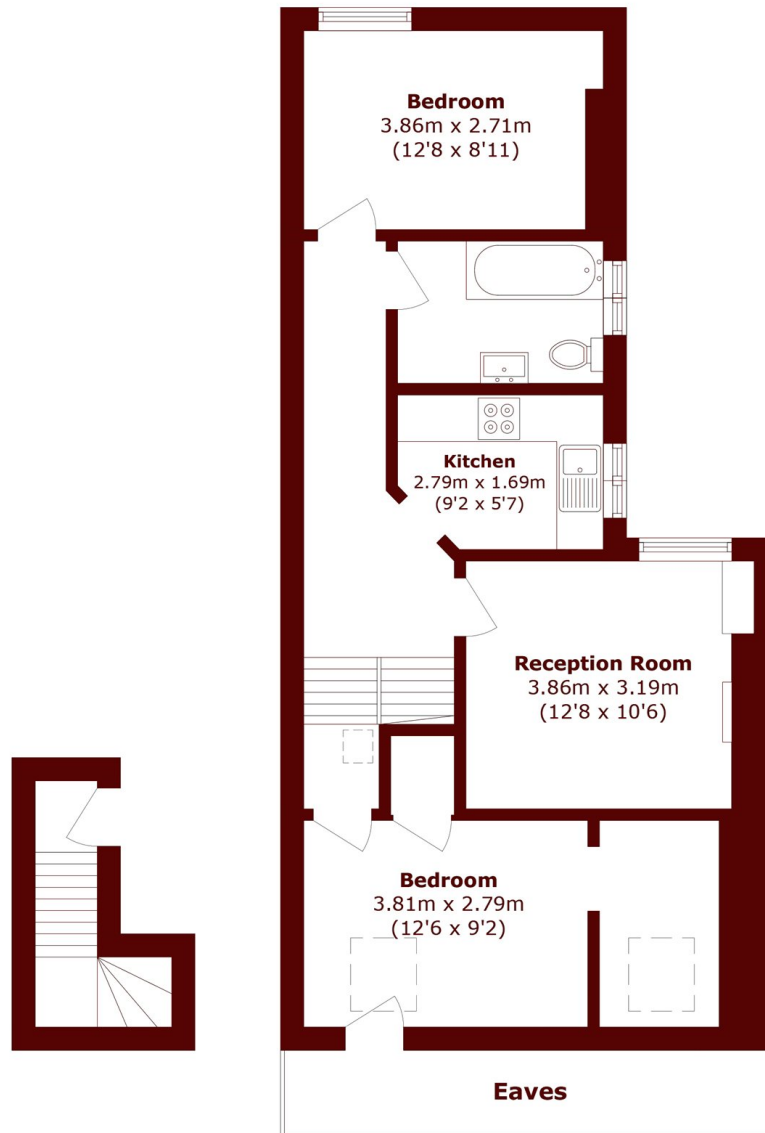


Louisville Road, SW17

£625,000

 2  1  1  F

- Two Double Bedrooms
- Heaver Estate
- Great Transport Links
- Share of Freehold
- Close to Tooting Common
- 694 Sq. Ft.



First Floor

Second Floor

Total area (approx.): 64.5 sq. m (694.2 sq. ft)
(Excluding Eaves)

Marsh & Parsons Tooting
29-31 Upper Tooting Road,
London, SW17 7TS
020 8767 3655

We aim to make our particulars both accurate and reliable. However, they are not guaranteed; nor do they form part of an offer or contract. If you require clarification on any points then please contact us, especially if you're traveling some distance to view. Please note that appliances and heating systems have not been tested and therefore no warranties can be given as to their good working order.