



College Road, Maidstone, Kent, ME15 6SU

Guide Price £525,000 - £550,000



**** PRICE GUIDE : £525,000 - £550,000 ** A TRULY STUNNING, EXTENDED, THREE BEDROOM DETACHED FAMILY HOME SITUATED ON A SPECTACULAR, APPROXIMATE 0.3 OF AN ACRE PLOT WITHIN WALKING DISTANCE OF THE TOWN CENTRE ****

Page & Wells are delighted to bring to the market this beautifully presented 1930's built family home. The ground floor accommodation features a welcoming entrance hall, bay fronted living room, extended dining room with log burner and a quality fitted kitchen. The basement has been cleverly converted to provide a spacious utility room, ample storage, pantry and shower room. There are three bedrooms on the first floor and a contemporary bathroom suite. The landing allows access to a fully boarded and insulated attic room with power and light. There is a driveway providing off-road parking facilities, attached garage and a superb rear garden, beautifully maintained by our clients that must be viewed to be appreciated. There is an extensive patio area, garden office, garden room, large greenhouse, lawned areas and shrubs to borders. This property has undergone extensive improvements in recent years, including new radiators, cavity wall insulation, new windows, replastering and shutters to the front elevation. Contact PAGE & WELLS King Street Office on 01622 756703. Tenure: Freehold. EPC Rating: E. Council Tax Band: E.



KEY FEATURES

- 0.3 of an acre plot with stunning gardens
- Extended
- Three bedrooms
- Contemporary bathroom
- Converted basement
- Driveway and garage
- Walking distance of town centre
- Viewing recommended

ACCOMMODATION

Ground Floor:

Entrance Hall

Lounge

Extended Dining Room

Kitchen

Lower Ground Floor:

Utility Room

Pantry

Shower Room

First Floor:

Bedroom One

Bedroom Two

Bedroom Three

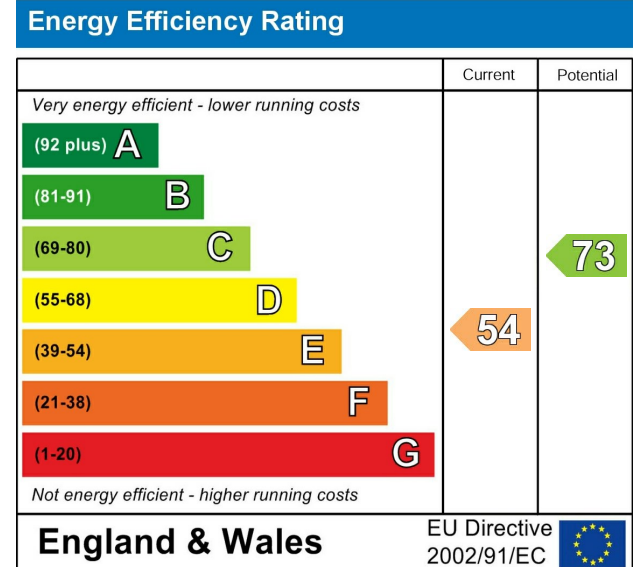
Family Bathroom

EXTERNALLY

There is a driveway providing off-road parking leading to attached garage. The rear garden is a distinct feature of the property and must be viewed to be appreciated.

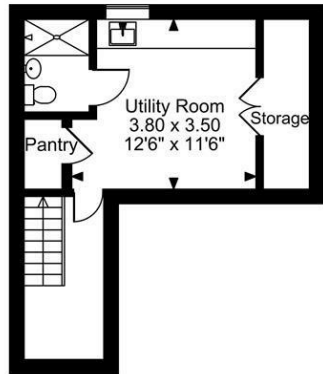
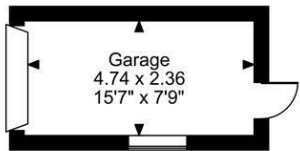
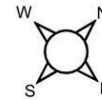
VIEWING

Viewing strictly by arrangement with the Agent's Head Office: 52-54 King Street, Maidstone, Kent ME14 1DB.
Tel: 01622 756703.

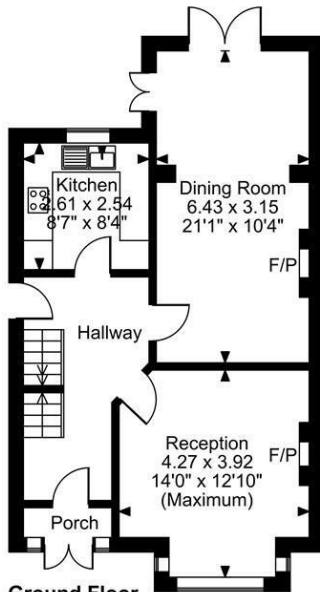


Page & Wells limited for themselves and for the vendors of this property whose agents they are give notice that: 1. These particulars do not constitute any part of, an offer or a contract. 2. All statements contained in these particulars as to this property are made without responsibility on the part of Page & Wells Limited or the Vendor. 3. None of the statements contained in these particulars as to the property is to be relied on as statements or representations of fact. 4. Any intending purchaser must satisfy himself by inspection or otherwise as to the correctness of each of the statements contained in these particulars. 5. The vendor does not make or give, and neither Page & Wells Limited nor any person in their employment has any authority to make or give any representation whatsoever in relation to this property. These particulars are supplied on the understanding that all negotiations are carried out throughout Page & Wells Limited. Properties with a reference prefixes EAA are those which Page & Wells Limited disclose an interest in accordance with the provisions of the Estates Agents Act 1979

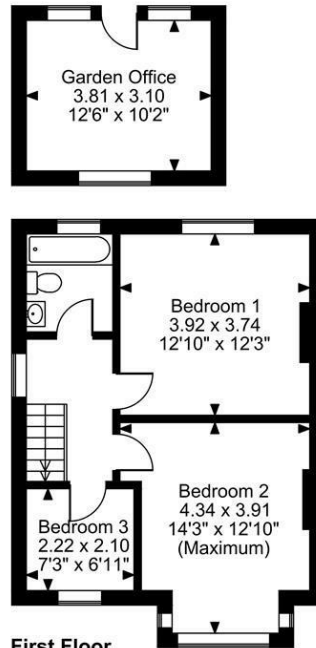
College Road, Maidstone, Kent
 Approximate Gross Internal Area
 Main House = 1359 Sq Ft/126 Sq M
 Garage = 120 Sq Ft/11 Sq M
 Outbuilding = 416 Sq Ft/39 Sq M
 Total = 1895 Sq Ft/176 Sq M



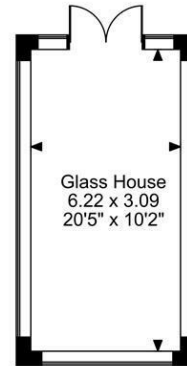
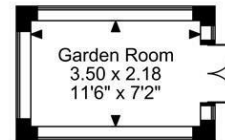
Lower Ground Floor



Ground Floor



First Floor



FOR ILLUSTRATIVE PURPOSES ONLY - NOT TO SCALE
 The position & size of doors, windows, appliances and other features are approximate only.
 © ehouse. Unauthorised reproduction prohibited. Drawing ref. dig/8662570/SLU

