

Property ref: 160413



Stormer House, Arborfield Green, RG2 9TD

£1,750 PCM



Delightful Top Floor Two Bedroom Apartment In Popular Arborfield. Into Hallway With Generous Storage, Open Plan Kitchen With Modern Appliances Into Spacious 8 Meter Long Living Area , Onto Sizeable South Facing Balcony With Great Aspect Views , Two Good Size Bedrooms With Master Shower En-Suite. Allocated And Visitors Parking. EPC Rating C. Wokingham Council Tax Band C. Unfurnished. Close Proximity To Supermarkets, Leisure and Amenities.

Available 06/07/2026

- Two Bedroom Top Floor Apartment In Popular Arborfield
- Generous 8 Meter Long Living Area
- South Facing Balcony With Hazebrouck Meadows View
- Master Bedroom En-Suite
- Open Plan Kitchen With Modern Appliances
- Allocated and Visitors Parking

*Fees For Assured Shorthold Tenancies: when you rent a property from us you will be required to pay a sum equivalent to one weeks' rent for a holding deposit. Upon successful application, this amount will be off set against your first months' rent. You will also be required to pay a security deposit equivalent to 5 weeks' rent which will be held and protected in line with Deposit legislation. For more information about our fees please visit: www.michael-hardy.co.uk
Fees for all other tenancies (Non Housing Act Tenancies / Company Lets): when you rent a property from us we will charge you a one-off fee per property. This charge is the equivalent of 15 days of the monthly rental charge (+VAT) with a minimum fee of £450 (inc.VAT) up to a maximum of £650 (inc.VAT). Other fees may apply depending on your circumstances.

0118 9776 776

lettings@michael-hardy.co.uk www.michael-hardy.co.uk

Michael Hardy Lettings, 9 Broad Street, Wokingham, , RG40 1AU

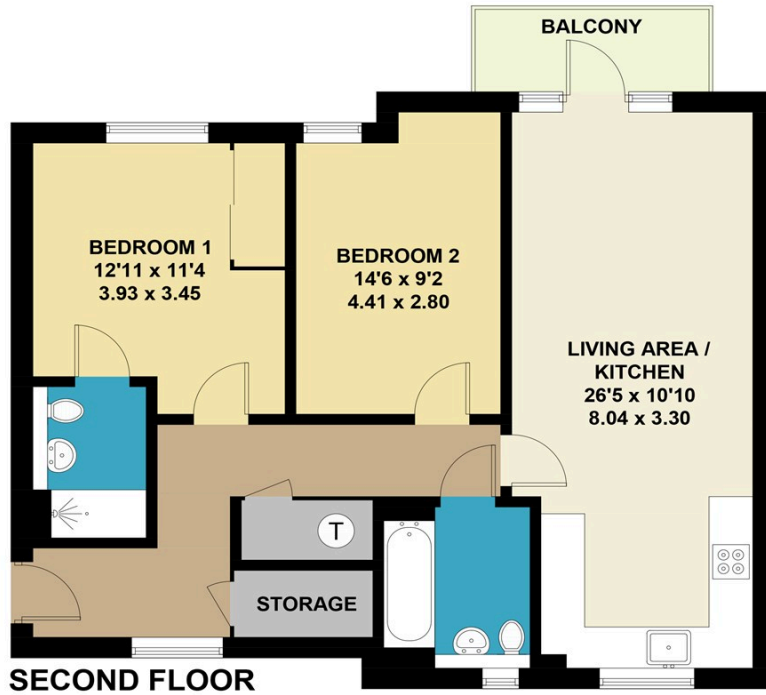
Broadband/Mobile Info: Connections available. For an indication of specific speeds and supply of Broadband and Mobile, we advise applicants go to the Ofcom website Broadband and Mobile Coverage Checker.





Archer Grove, Arborfield

Approximate Gross Internal Area = 814 sq ft / 75.6 sq m



SECOND FLOOR

This plan is for layout guidance only. Not drawn to scale unless stated. Windows and door openings are approximate. Whilst every care is taken in the preparation of this plan, please check all dimensions, shapes and compass bearings before making any decisions reliant upon them. (ID1062610)
Produced by BlueSky Estate Agency Services on behalf of Michael Hardy