



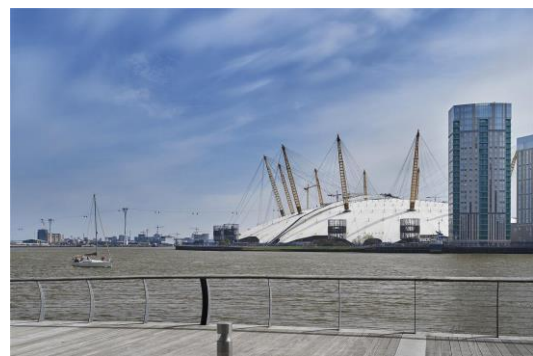
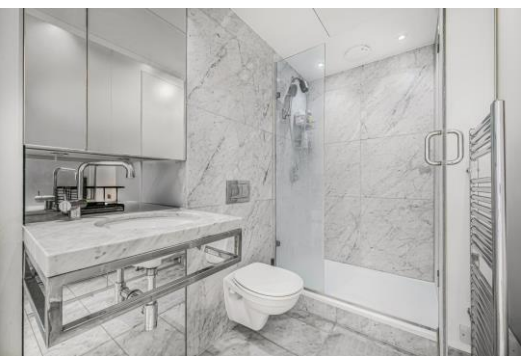
Ontario Tower

4 Fairmont Avenue, E14

Offers in excess of £250,000

A superb high spec studio suite in Ontario Tower, E14, a prime riverside development with 24hr concierge & security, gym, pool, sauna & steam room. It boasts wood flooring, fully integrated kitchen, marble bathrooms.

CHESTERTONS



Ontario Tower

4 Fairmont Avenue, E14

- Prestigious Development
- Exceptional views of Canary Wharf
- 24 Hour Concierge
- Swimming Pool and Sauna included
- Residents Gym
- On Site Shops



This is a beautifully designed studio suite, set on the 21st floor of this landmark riverside development. Offering a perfect blend of luxury, comfort, and convenience, this high-spec apartment has been finished to an exceptional standard throughout.

The living space features sleek wooden flooring, underfloor heating, and comfort cooling technology, ensuring year-round comfort. A fully integrated kitchen with premium appliances and ample storage space complements the marble-finished bathroom, creating a stylish and practical home environment. The floor-to-ceiling windows flood the studio with natural light and showcase panoramic west-facing views across the Canary Wharf skyline, the perfect backdrop for relaxing or entertaining.

Residents can enjoy access to a superb range of on-site facilities, including a 24-hour concierge and security service, gym, swimming pool, sauna, and steam room.

The development's riverside location also places you within walking distance of Canary Wharf's vibrant shops, bars, restaurants, and transport links, including the DLR, Elizabeth Line, and Jubilee Line, providing swift connections across London.

Tenure: Leasehold 975 years approx. remaining

Service Charge: £4,906 pa

Ground Rent: £300 pa

Local Authority: Tower Hamlets

Council Tax Band: D

Score	Energy rating	Current	Potential
92+	A		
81-91	B		
69-80	C	80 C	82 B
55-68	D		
39-54	E		
21-38	F		
1-20	G		

Chestertons Canary Wharf & Greenwich Sales

Harbour Island

28 Harbour Exchange Square

London

E14 9GE

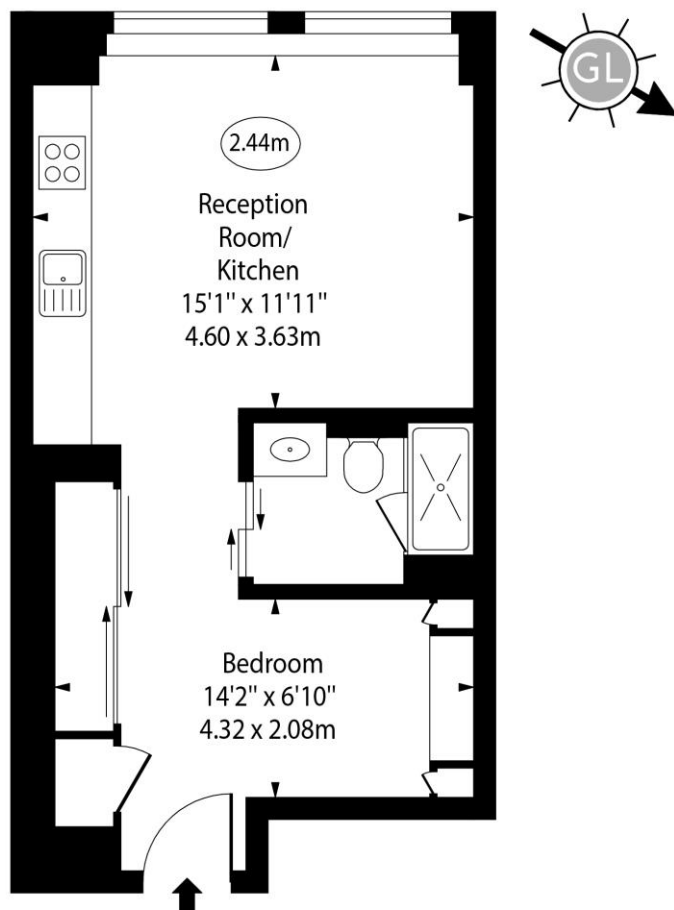
canarywharf@chestertons.co.uk

020 7510 8300

chestertons.co.uk

Ontario Tower,
Fairmont Avenue, E14

○ - Ceiling Height



Twenty First Floor

Approx Gross Internal Area 380 Sq Ft - 35.30 Sq M

Every attempt has been made to ensure the accuracy of the floor plan shown. However, all measurements, fixtures, fittings, and data shown are approximate interpretations and for illustrative purposes only. Measured according to the RICS. Not To Scale.

www.goldlens.co.uk

Ref. No. 029638K

