

St Georges Crescent, Rhyl, Denbs LL18 3NN

Guide Price £290,000

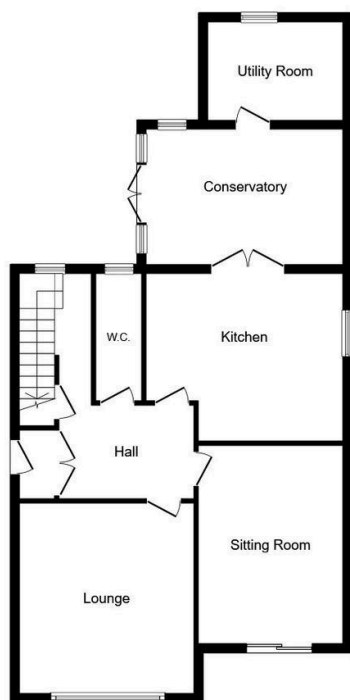
3 2 3



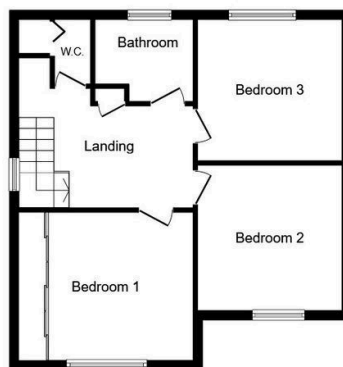
This Captivating three bedroom detached family home having the added benefit of a detached Annex to the rear for dual occupation. Being well presented throughout retaining many of its original features, with two reception rooms, good size kitchen, uPVC double glazed conservatory to the rear, off street parking and low maintenance gardens enjoying privacy.

Key Features

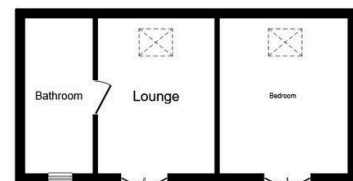
- Well presented throughout
- Large conservatory
- Having a wealth of character
- Off street parking
- Council tax - E
- Three bedrooms
- Annex
- Detached property
- EPC - D
- Date: 24/03/2026



Ground Floor



First Floor



Annex

Total floor area 168.8 sq.m. (1,817 sq.ft.) approx

This floor plan is for illustration purposes only and may not be representative of the property. The position and size of doors, windows and other features are approximate. Unauthorized reproduction prohibited. © PropertyBOX