



Fordwych Road, NW2

£950 Per week

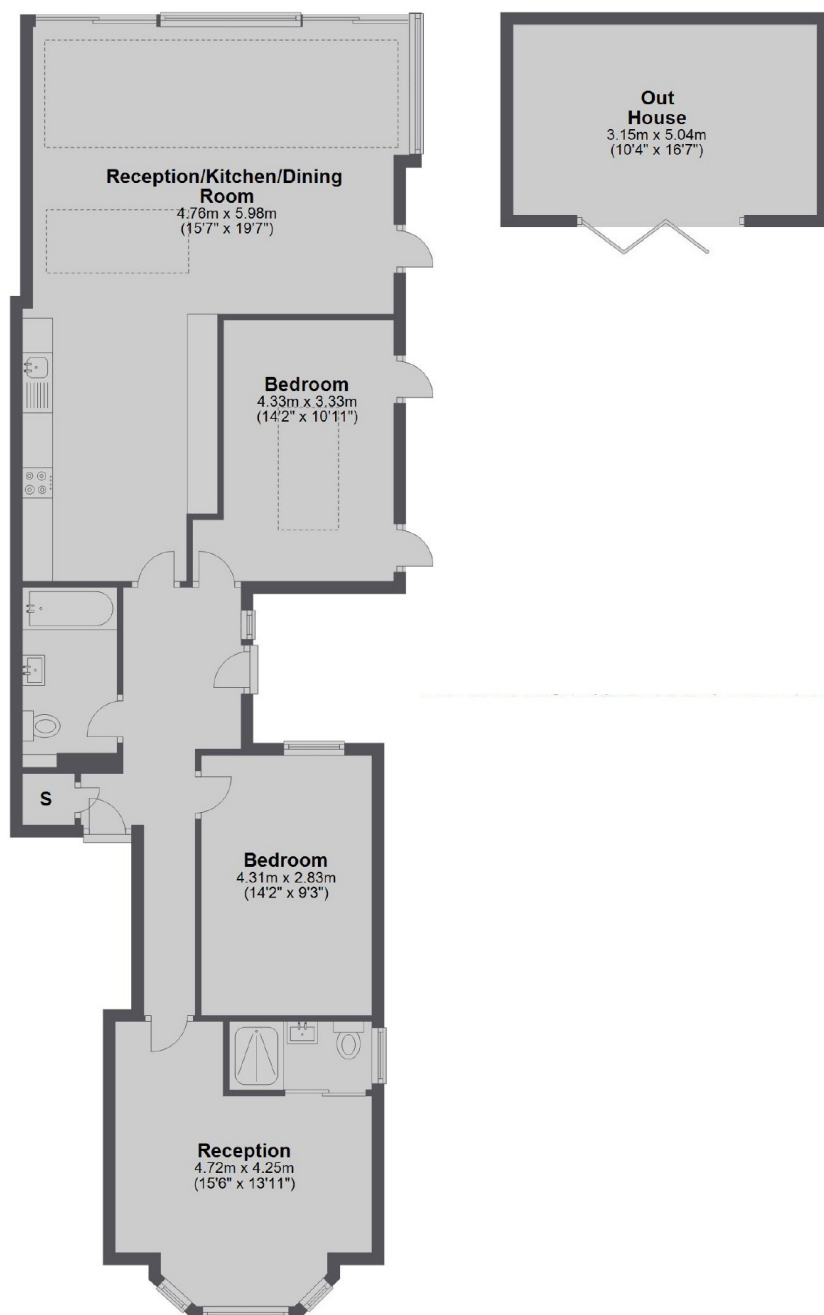
A contemporary and newly refurbished three bedroom, two bathroom flat to rent which boasts a private garden with an outbuilding. Ideal for a family or a couple who love to entertain.

On a pretty tree lined street, the property is well located with the Jubilee Line less than a quarter of a mile away. Sainsburys is among a large selection of shops, cafes and bars nearby.

Features

- Three Double Bedrooms
- Two Bathrooms
- Open Plan Living
- Period Conversion
- Outbuilding
- Private Garden

Fordwych Road, London, NW2



Main area: Approx. 104.1 sq. metres (1120.6 sq. feet)
Plus outbuildings, approx. 15.9 sq. metres (171.3 sq. feet)

Dexters

West Hampstead Lettings
106 West End Lane
London
NW6 2LS
Lettings
020 7644 9301

Energy Rating: C. We aim to make our particulars both accurate and reliable. However they are not guaranteed; nor do they form part of an offer or contract. If you require clarification on any points then please contact us, especially if you're traveling some distance to view. Please note that appliances and heating systems have not been tested and therefore no warranties can be given as to their good working order.

 **RICS** | Regulated
Estate Agent
and Letting Agent

dexters.co.uk