



## PLUMBERS ROW, E1

£1,950 pcm

A well-presented one-bedroom apartment. Offering 475 sq ft of internal space. The property comprises a bright open-plan kitchen and reception area with a Juliet balcony, a double bedroom with fitted storage, and a modern bathroom. Finished with wooden flooring and large windows, the apartment feels light and spacious throughout.

- Modern
- Large One Bedroom
- Concierge
- Gym
- Walkable to Aldgate East
- Available end of May

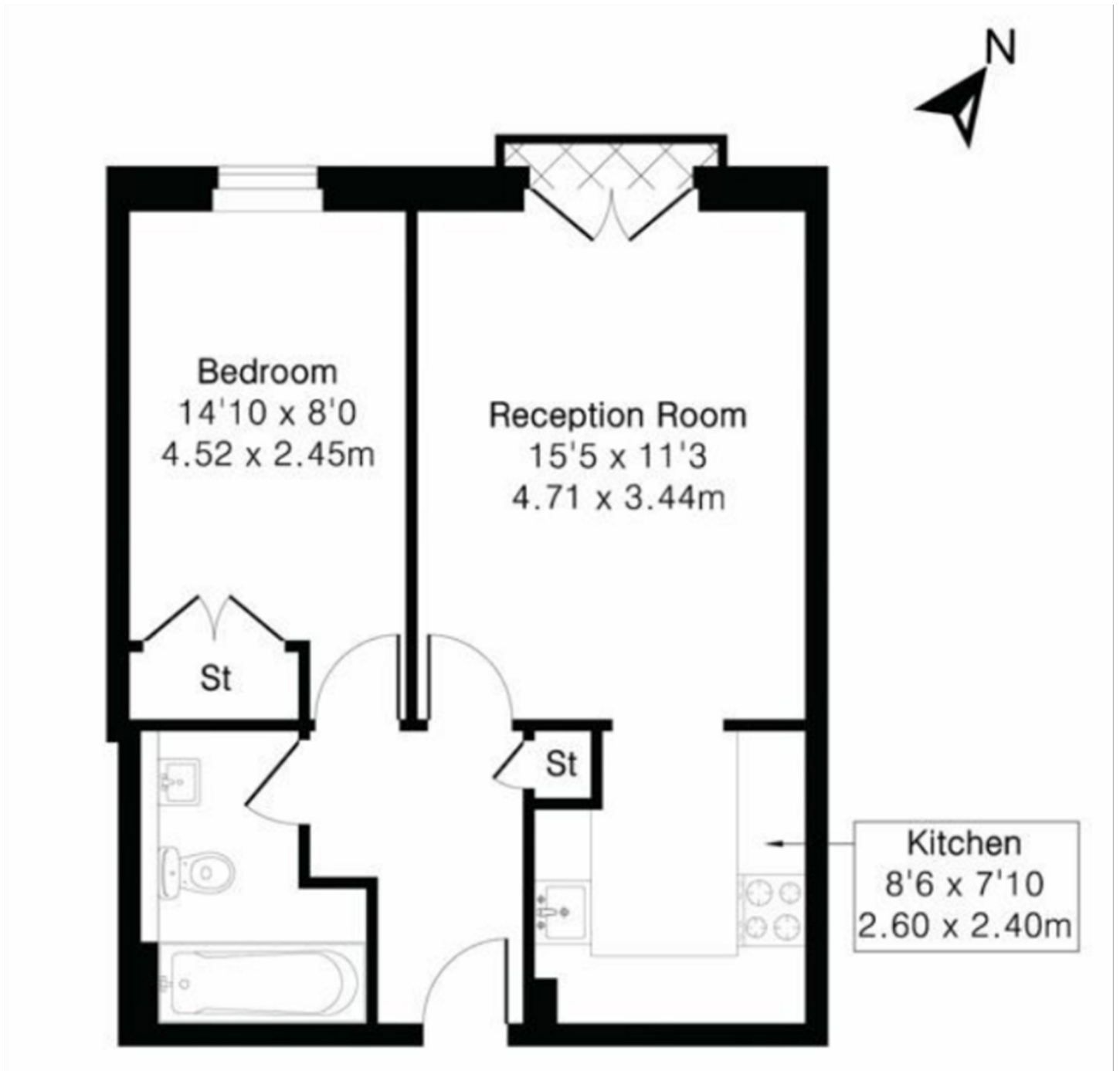


## ABOUT THE HOME

E1 1EQ has exceptionally strong transport links, making it one of the most connected parts of central East London. The nearest station is Aldgate East station, just a short walk away, while Whitechapel station is also close and provides access to the Elizabeth line, London Overground, and multiple Underground lines, enabling very fast journeys across the city. Major hubs like Liverpool Street station are within walking distance, offering national rail services and direct airport connections, and Shadwell station adds DLR access towards Canary Wharf. Numerous bus routes run along nearby Whitechapel Road and Commercial Road, giving frequent connections in all directions, and the area is highly walkable, with the City of London reachable in around 1520 minutes on foot. Overall, it's a location where you can get almost anywhere







**LiFE RESIDENTIAL**

71 Drayton Park, London, N5

1BF

Sales: 020 3838 8666

Lettings: 020 7359 4488

Energy Rating: . We aim to make our particulars both accurate and reliable. However they are not guaranteed; nor do they form part of an offer or contract. If you require clarification on any points then please contact us, especially if you're traveling some distance to view. Please note that appliances and heating systems have not been tested and therefore no warranties can be given as to their good working order.