



PARKHURST ROAD, N7

£2,100 pcm

Upper-floor apartment set within a well-maintained and attractive development, ideally located just a short walk from Holloway Road station, offering excellent transport links across London. The property features a bright and inviting open-plan kitchen and reception area, thoughtfully designed to maximise space and natural light. The kitchen is fitted with sleek,

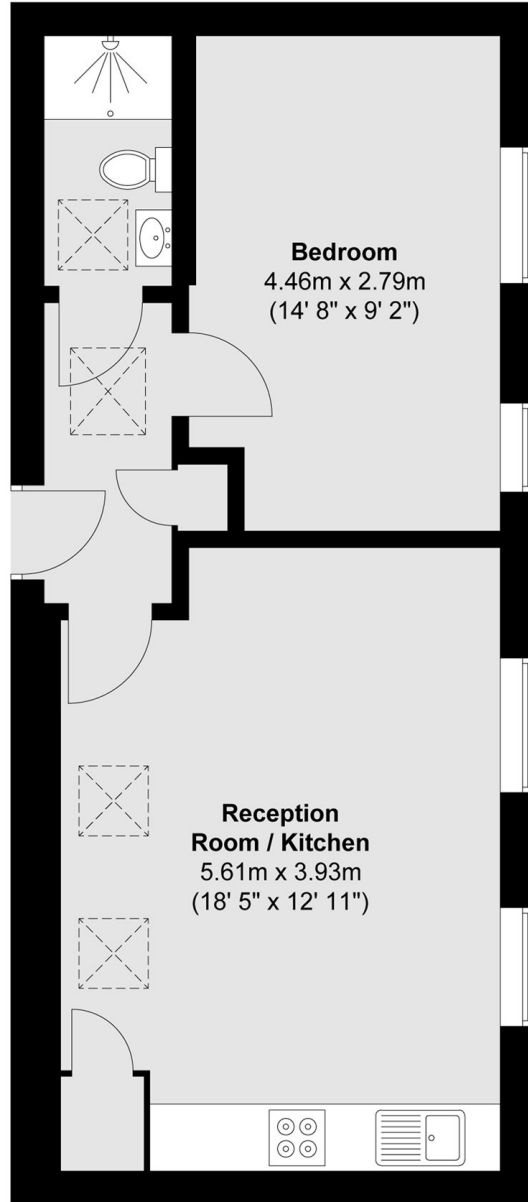
- - Modern
- - Beautiful Furnishing
- - Holloway Road
- - Wooden Flooring
- - Available Now
- - Large One bedroom



ABOUT THE HOME

Ideally located near the shops, cafés, and restaurants of Holloway Road, with Highbury & Islington and Tufnell Park stations close by.





Total area (approx.) : 40.8 sq. m (439 sq. ft)

LiFE RESIDENTIAL

71 Drayton Park, London, N5

1BF

Sales: 020 3838 8666

Lettings: 020 7359 4488

Energy Rating: . We aim to make our particulars both accurate and reliable. However they are not guaranteed; nor do they form part of an offer or contract. If you require clarification on any points then please contact us, especially if you're traveling some distance to view. Please note that appliances and heating systems have not been tested and therefore no warranties can be given as to their good working order.