



GLEN HEATON

exp[®] UK

@glen.heaton@exp.uk.com

glenheaton.exp.uk.com

01617 062054

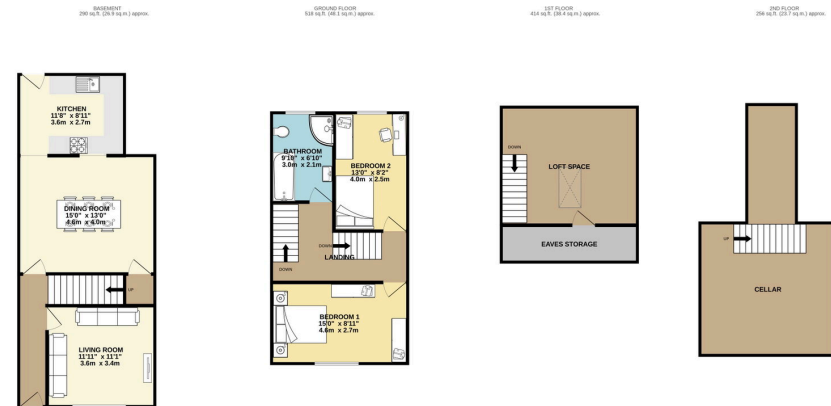
22 West street ,
Offers Over £180,000

🛏️ 2 🚿 1 🚗 2



- Two Double Bedrooms
- Loft Space
- Cellar
- Immaculate Condition Throughout





TOTAL FLOOR AREA: 1477 sq.ft. (137.2 sq.m.) approx.
 Whilst every attempt has been made to ensure the accuracy of the floorplan contained here, measurements of doors, windows, rooms and any other items are approximate and no responsibility is taken for any errors or mis-statements. This plan is for illustrative purposes only and should be used as such by any prospective purchaser. The services, systems and appliances shown have not been tested and no guarantee as to their operation or efficiency can be given.
 Made with Metrepx C2025

Open Day Saturday 4th July, Call The Office To Book Your Time Slot.

Welcome To West Street , Oldham, A Stunning Two Double Bedroom Mid Terrace Home In Immaculate Condition Throughout.

Energy performance certificate (EPC)		
22 West Street Oldham OL14 5AB	Energy rating C	Valid until: 1 June 2024 Certificate number: 6388-2788-2965-2594-6825
Property type	Mid-terrace house	
Total floor area	80 square metres	

Rules on letting this property

Properties can be let if they have an energy rating from A to E.

You can read [guidance for landlords on the regulations and exemptions](https://www.gov.uk/guidance/domestic-private-rented-property-minimum-energy-efficiency-standards-guidance) (https://www.gov.uk/guidance/domestic-private-rented-property-minimum-energy-efficiency-standards-guidance).

Energy rating and score

This property's energy rating is C. It has the potential to be B.

[See how to improve this property's energy efficiency.](#)



The graph shows this property's current and potential energy rating.

Properties get a rating from A (best) to G (worst) and a score. The better the rating and score, the lower your energy bills are likely to be.

For properties in England and Wales:

the average energy rating is D
 the average energy score is 60