



Maple Leaf Square, SE16

£925,000

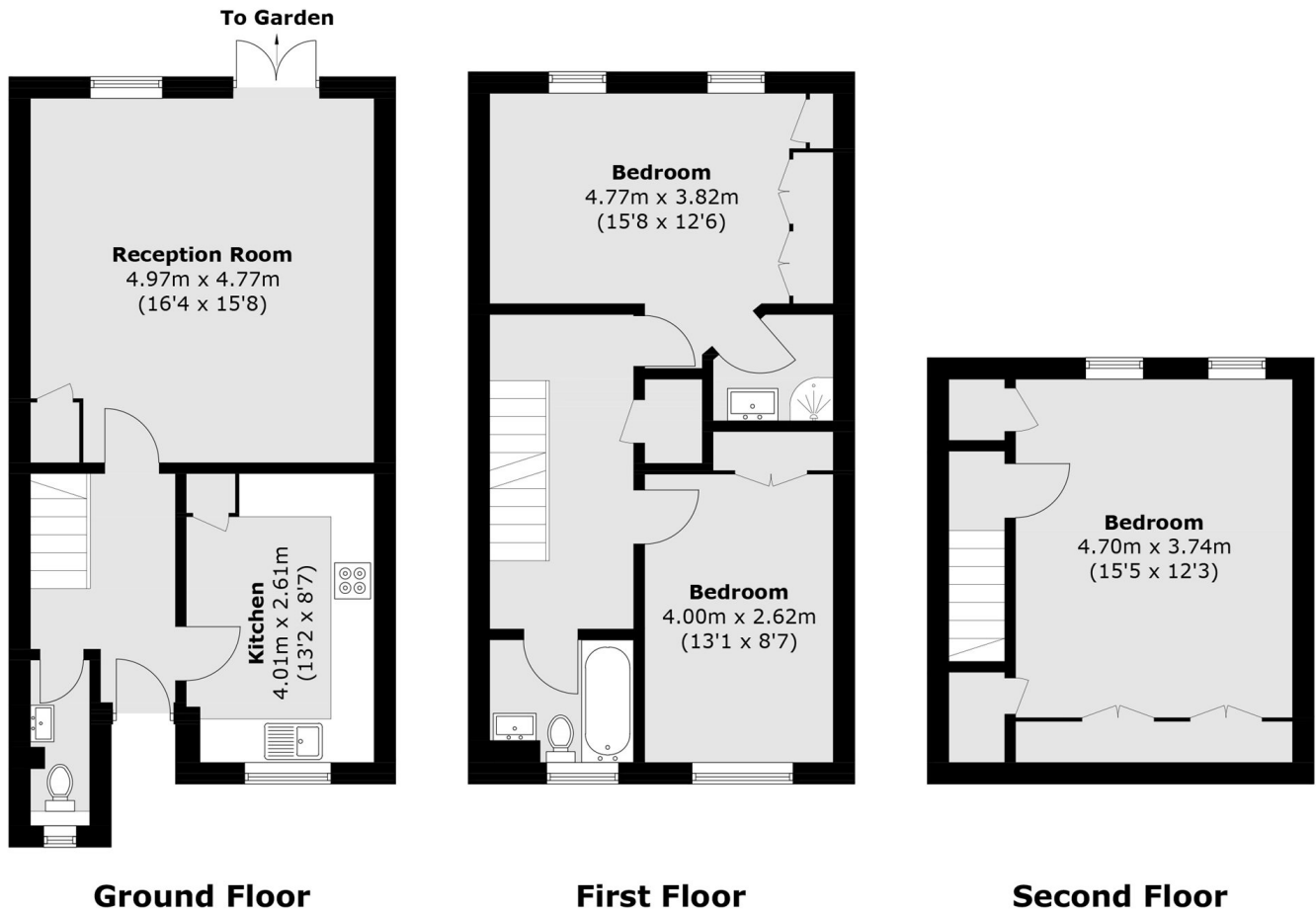
Situated on a quiet leafy street, this three double bedroom freehold house is in fantastic condition and has a large living room, separate kitchen, two bathrooms, additional guest WC, ample storage, garage and a private garden.

Located just 0.5 Miles from Canada Water station and 0.6 Miles from Rotherhithe Station, Maple Leaf Square offers an easy commute to anywhere in London. An abundance of shops, cafés and restaurants are also close by.

Features

- Three Double Bedrooms
- Two Bathrooms
- Off Street Parking
- Private Garden
- Excellent Location
- Garage

Maple Leaf Square, London, SE16



Total area (approx.): 113.6 sq. m (1,222.7 sq. ft)