



OFFERS IN THE REGION OF

£850,000

Lanvanor Road

London, SE15 2BT

**GARETH
JAMES**

PROPERTY SUMMARY

A charming three-bedroom period terraced home spanning over 1,100 sq ft, set on one of Nunhead's most desirable roads.

3



2

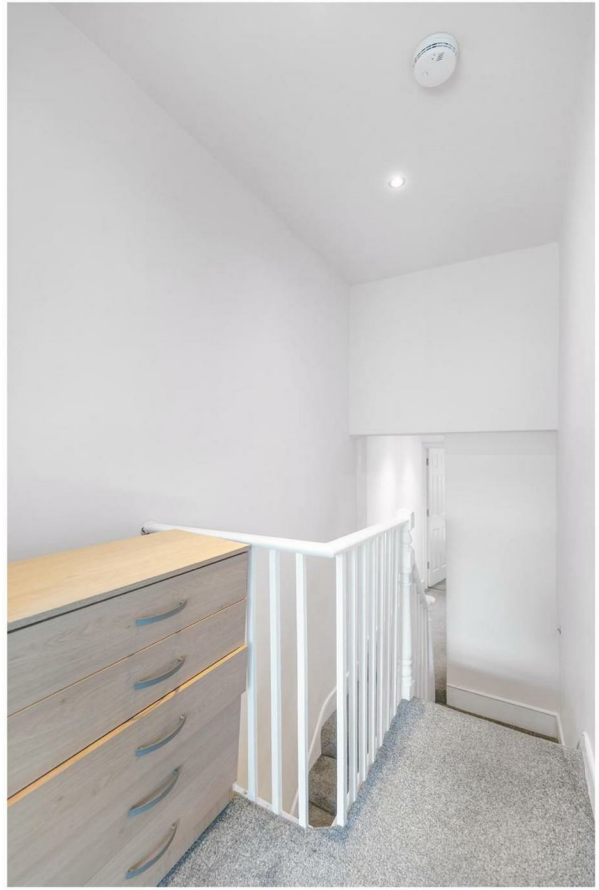


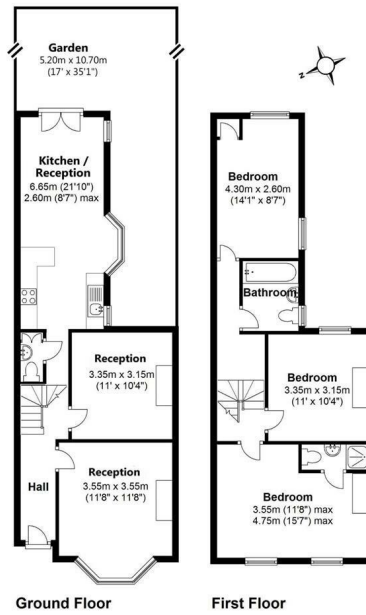
2











Total area: approx. 102.6 sq. metres (1104.0 sq. feet)

3	
2	
2	

Energy Efficiency Rating		
	Current	Potential
Very energy efficient - lower running costs		
(92 plus) A		
(81-91) B		85
(69-80) C		
(55-68) D	64	
(39-54) E		
(21-38) F		
(1-20) G		
Not energy efficient - higher running costs		
England & Wales	EU Directive 2002/91/EC	

Agents Note: Whilst every care has been taken to prepare these particulars, they are for guidance purposes only. All measurements are approximate and are for general guidance purposes only and whilst every care has been taken to ensure their accuracy, they should not be relied upon and potential buyers/tenants are advised to recheck the measurements

GARETH JAMES	OFFICE ADDRESS	OFFICE DETAILS
	129 Bellenden Road London SE15 4QY	02077324330 sales@garethjames.com https://www.garethjames.com/