



**4 Bed
House - Semi-
Detached
located in**

Asking price £413,000

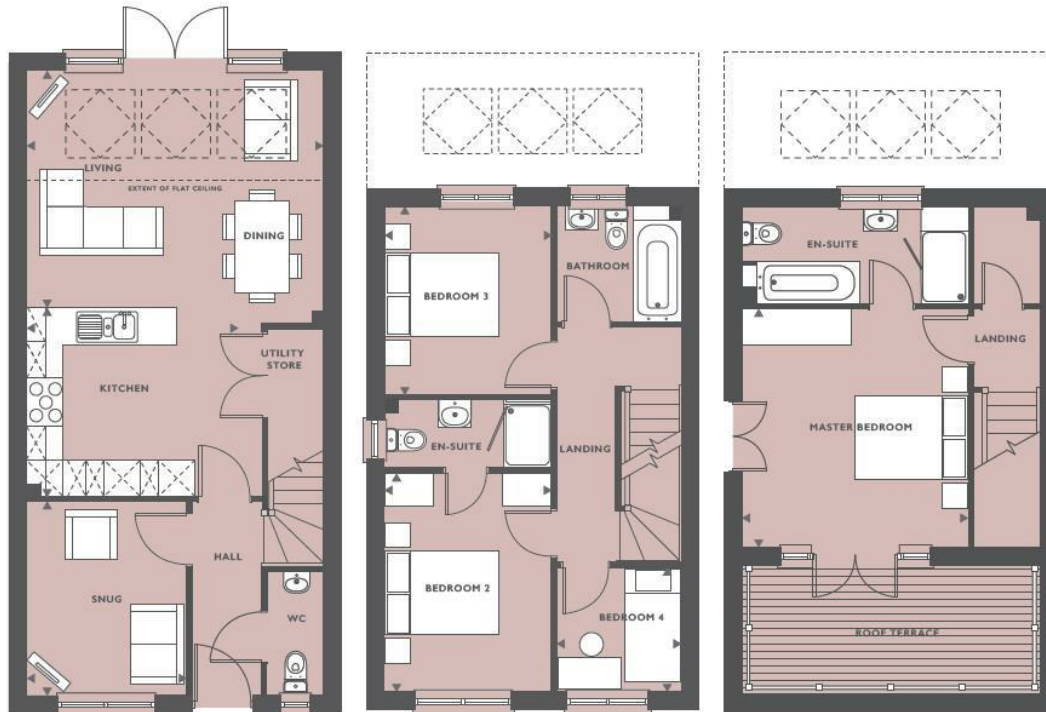


 **The
Goat
Residential**

THE DENE

FOUR BEDROOM HOME

1267 SQFT
1178 M²



INTERNAL IMAGE

FEATURES:

- Open-plan kitchen/dining and living room
- Impressive skylight windows and French doors leading to rear garden
- Convenient downstairs store room and WC
- Private master bedroom with en-suite and dressing area
- Spacious contemporary roof terrace
- Three further well-proportioned bedrooms
- Modern family bathroom

GROUND FLOOR

KITCHEN	3.87M X 3.11M	12'9" X 10'3"
LIVING/DINING	4.92M X 3.90M	16'2" X 12'10"
SNUG	2.63M X 3.19M	8'8" X 10'6"

FIRST FLOOR

BEDROOM 2	2.78M X 3.66M	9'2" X 12'
BEDROOM 3	2.78M X 3.13M	9'2" X 10'3"
BEDROOM 4	2.07M X 2.05M	6'10" X 6'9"

SECOND FLOOR

MASTER BEDROOM	3.76M X 3.94M	12'4" X 12'11"
----------------	---------------	----------------

Skylight windows

SVP

DIRECTIONS

CONTACT

The Goat Residential Ltd 1 Balloon Street
Manchester
M4 4BE

E: info@thegoatresidential.com
T: 02080 166545
<https://www.thegoatresidential.com/>

