



Connells

Fenton Street
Brierley Hill



Property Description

A TRADITIONAL THREE BEDROOMED SEMI DETACHED PROPERTY WITH TWO BATHROOMS, FEATURE LOG BURNER, TWO RECEPTION ROOMS HIGH CEILINGS AND A RANGE OF ORIGINAL FEATURES. Briefly comprising; front garden, entrance hallway, lounge, dining room, kitchen, downstairs bathroom, three bedrooms, shower room and gardens to the rear garden.

To The Front

Walled foregarden with steps up to front door.

Entrance Hallway

Door to the front elevation, stairs to first floor and doors to;

Ds Bathroom

Double glazed window to the rear elevation, bath, wash hand basin, wc and heated towel rail.

Lounge

Double bay window to the front elevation, open fireplace and radiator.

Dining Room

Double glazed window to the rear elevation, wood effect flooring, log burner, radiator and doors to;

Kitchen

Two double glazed windows to the side elevation, base units with electric oven and hob, single drainer sink, integrated dishwasher and door to storage.

Landing

Stairs to loft space and doors to all rooms.

Bedroom One

Two double glazed windows to the front elevation and radiator.

Bedroom Two

Double glazed window to the rear elevation and plumbing for radiator.

Bedroom Three

Double glazed window to the side elevation and radiator with ladder to mezzanine and window to side elevation.

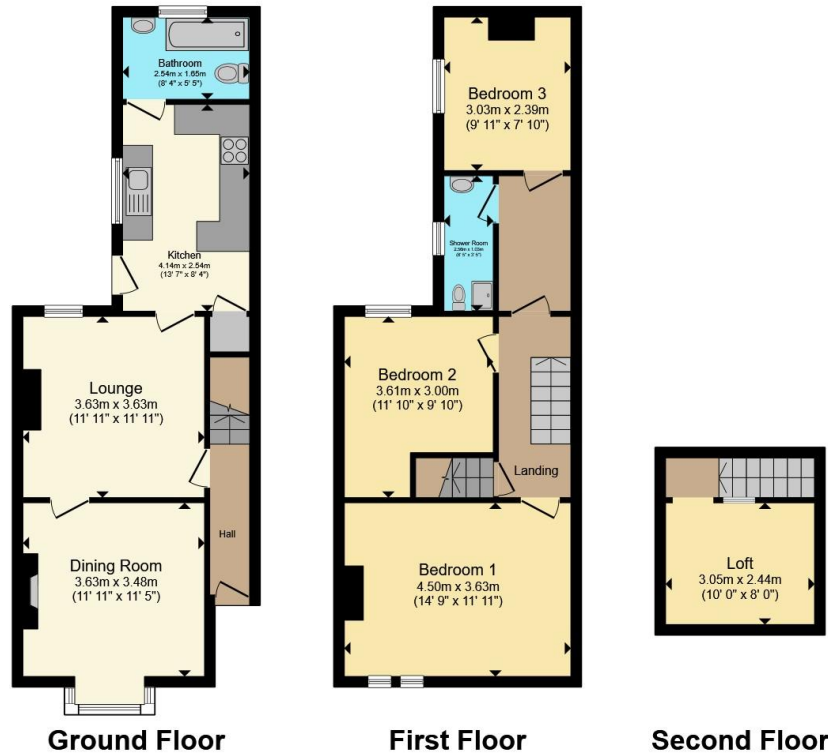
Shower Room

Double glazed window to the side elevation, plumbing for shower and cubicle (left at property) wash hand basin and wc.

Rear Garden

Tiered garden to the rear of the property with private right of access.





Total floor area 105.0 m² (1,130 sq.ft.) approx

This floor plan is for illustrative purposes only. It is not drawn to scale. Any measurements, floor areas (including any total floor area), openings and orientation are approximate. No details are guaranteed, they cannot be relied upon for any purpose and they do not form part of any agreement. No liability is taken for any error, omission or misstatement. A party must rely upon its own inspection(s). Powered by www.propertybox.io



To view this property please contact Connells on

T 01384 374 545
E stourbridge@connells.co.uk

11B St. Johns Road
 STOURBRIDGE DY8 1EJ

EPC Rating: D Council Tax
 Band: A

check out more properties at connells.co.uk

Tenure: Freehold



1. MONEY LAUNDERING REGULATIONS Intending purchasers will be asked to produce identification documentation at a later stage and we would ask for your co-operation in order that there will be no delay in agreeing the sale. 2. These particulars do not constitute part or all of an offer or contract. 3. The measurements indicated are supplied for guidance only and as such must be considered incorrect. Potential buyers are advised to recheck measurements before committing to any expense. 4. We have not tested any apparatus, equipment, fixtures, fittings or services and it is in the buyers interest to check the working condition of any appliances.

Connells Residential is registered in England and Wales under company number 1489613, Registered Office is Cumbria House, 16-20 Hockliffe Street, Leighton Buzzard, Bedfordshire, LU7 1GN. VAT Registration Number is 500 2481 05.

See all our properties at www.connells.co.uk | www.rightmove.co.uk | www.zoopla.co.uk

Property Ref: SBR313484 - 0005