

This beautifully presented and extended detached house is ideally situated at the end of a cul de sac and benefits from ample off road parking. The property enjoys four bedrooms, en-suite shower room and superb kitchen/breakfast room.

The Accommodation Comprises:-

UPVC double glazed front door and side panel to;

Entrance Hall:-

Coved ceiling, stairs to first-floor, radiator, under stairs storage cupboard.

Cloakroom:-

Coved ceiling, obscured UPVC double glazed window to front elevation, WC, wash hand basin.

Lounge/Dining Room:- 23' 02" x 11' 08" narrowing to 9' (7.06m x 3.56m)

Coved ceiling, UPVC double glazed window to front elevation, two radiators, feature gas fireplace with stone surround and hearth, UPVC double glazed double opening doors and windows to rear garden, door to;

Kitchen/Breakfast Room:- 18' 7" x 11' 5" (5.66m x 3.48m)

Fitted with a range of base and eye level units, roll top work surface, sink with mixer tap, breakfast bar, space for table and chairs, integrated appliances to include fridge and freezer, dishwasher, washing machine, electric double oven and hob with extractor hood over. Inset spot lighting, UPVC double glazed windows and double opening doors onto the rear garden, access to under stairs storage cupboard.

First Floor Landing:-

Coved ceiling, access to the loft space.

Bedroom One 18' 4" x 9' 0" (5.58m x 2.74m)

UPVC double glazed window to the front elevation, radiator, spaces for wardrobes, door to:-

En-Suite 8' 9" x 5' 4" (2.66m x 1.62m)

Close coupled W.C, wash hand basin set in vanity unit, shower cubicle with mains shower and additional rain fall shower head, ladder style radiator, UPVC double glazed window to rear elevation.

Bedroom Two 11' 06" x 11' 05" (3.56m x 3.56m)

Coved ceiling, UPVC double glazed window to front elevation, radiator, built-in wardrobes with mirrored fronted doors, hanging space and shelving, cupboard housing combination boiler.

Bedroom Three- 11' 1" x 9' 0" (3.38m x 2.74m)

Coved ceiling, UPVC double glazed window to rear elevation.

Bedroom Four:- 8' 6" x 8' 5" (2.59m x 2.56m)

UPVC double glazed window to rear elevation, radiator.

Family Bathroom:- 6' 07" x 6' 01" (2.01m x 1.85m)

Obscured UPVC double glazed window to front elevation, close coupled WC, wash hand basin set in vanity unit, panelled bath with shower over.

Outside:-

The rear garden is a delightful feature of the home, mainly laid to lawn, enclosed by panelled fencing, flowerbeds, patio area, side pedestrian access. To the front of the property is a driveway and lawned area.

General Information

Construction - Traditional

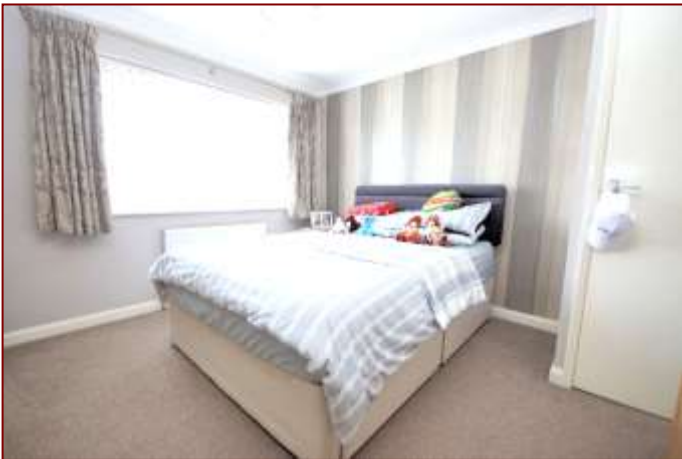
Water Supply - Portsmouth Water

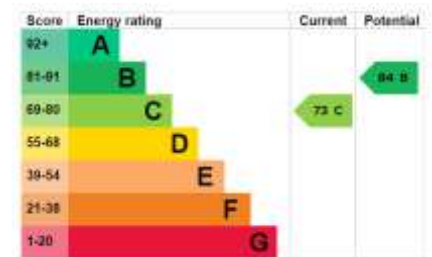
Electric Supply - Mains

Sewerage - Mains sewerage

For Mobile & Broadband coverage: <https://checker.ofcom.org.uk>

For Flood risk: www.gov.uk/check-long-term-flood-risk





Tenure: Freehold

Council Tax Band: E

Disclaimer: These particulars are set out as a general outline in accordance with the Consumer Protection from Unfair Trading Regulations 2008 (CPR's) and Business Protection from Misleading Marketing Regulations 2008 (BPR's) only for the guidance of intending purchasers or lessees, and do not constitute any part of an offer or contract. Details are given without any responsibility, and any intending purchasers, lessees or third parties should not rely on them as statements or representations of fact, but must satisfy themselves by inspection or otherwise as to the correctness of each of them.

We have not carried out a structural survey and the services, appliances and specific fittings have not been tested. All photographs, measurements, floor plans and distances referred to are given as a guide only and should not be relied upon for the purchase of carpets or any other fixtures or fittings. Gardens, roof terraces, balconies and communal gardens as well as tenure and lease details cannot have their accuracy guaranteed for intending purchasers. Lease details, service ground rent (where applicable) are given as a guide only and should be checked and confirmed by your solicitor prior to exchange of contracts.

No person in the employment of Fenwicks Estates Ltd has any authority to make any representation or warranty whatever in relation to this property. Purchase prices, rents or other prices quoted are correct at the date of publication and, unless otherwise stated, exclusive of VAT.

Data Protection: We retain the copyright in all advertising material used to market this Property.
Money Laundering Regulations 2017: Intending purchasers will be required to produce identification documentation once an offer is accepted.



DRAFT DETAILS

£534,000
 Admirals Walk, Alverstoke, Gosport, PO12 2PD
 Fenwicks - Gosport Office: 02392 529889 www.fenwicks-estates.co.uk

Fenwicks
 THE INDEPENDENT ESTATE AGENT