



## Clymping Dene, TW14

£699,950

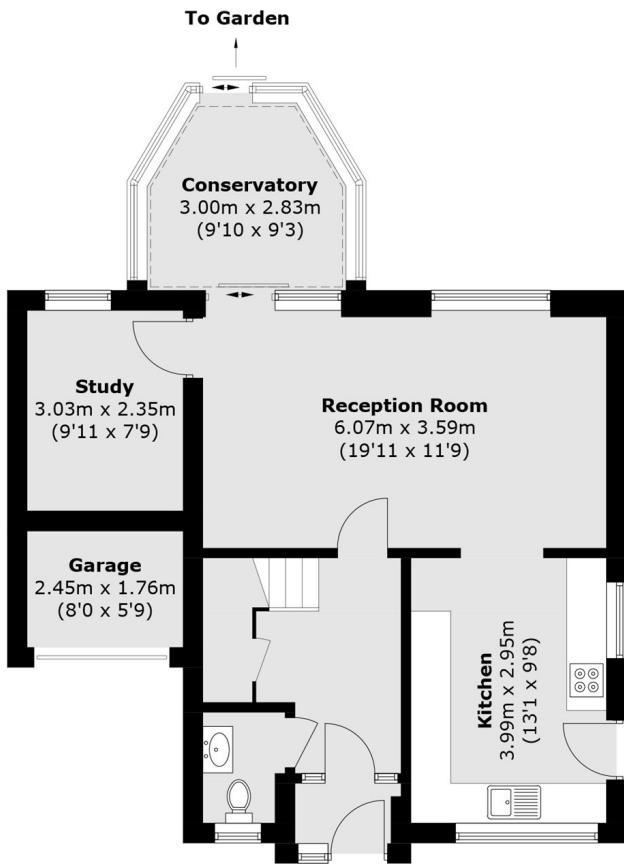
A well presented four bedroom detached family home offering spacious accommodation, off street parking, garage, south facing garden with stunning views. Further benefits include a boarded and carpeted loft providing excellent storage and potential for extension STPP.

Ideally located in Clymping Dene, the property is conveniently placed only 0.5 Miles from Feltham High Street and 0.4 Miles from Feltham Station, with local bus stops nearby, providing excellent transport links into London and beyond.

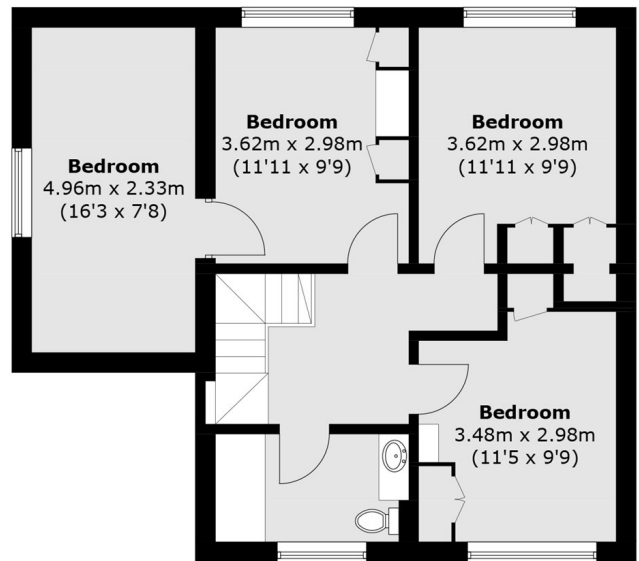
### Features

- Four Bedrooms
- Detached
- South Facing Garden
- Off Street Parking
- Garage
- Park Views

# Clymping Dene, Feltham, TW14



**Ground Floor**



**First Floor**

Approx Internal Area: 124.9 sq. m (1,344.4 sq. ft)

Garage: 4.1 sq. m (44.1 sq. ft)

Total: 129.0 sq. m (1,388.5 sq. ft)