



Greycoat Street, SW1P

£700,000

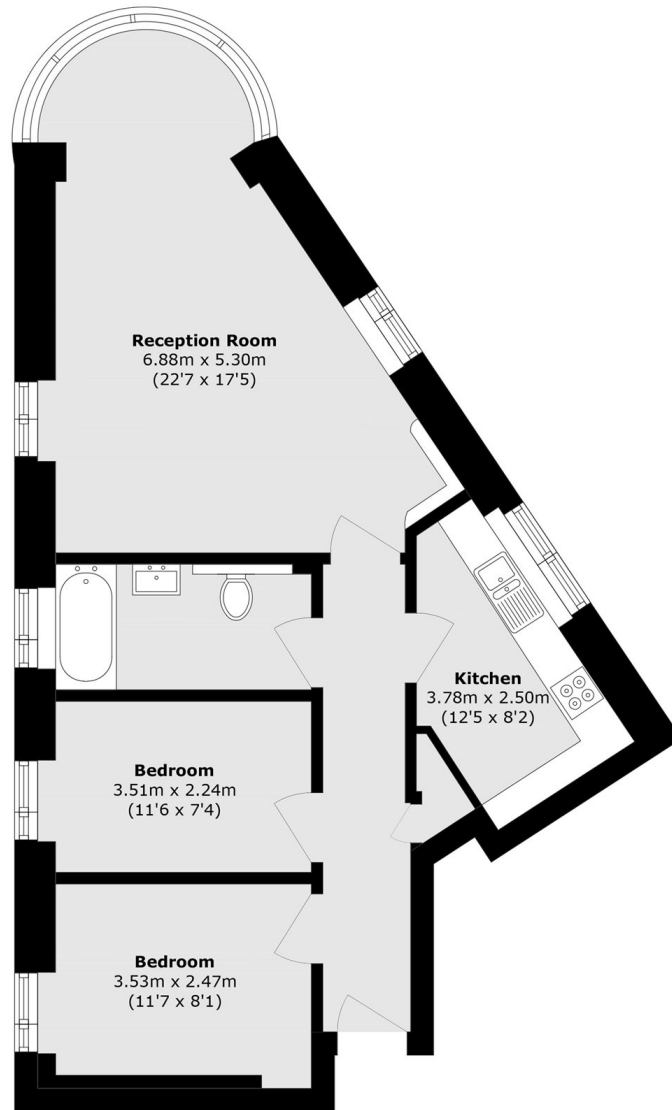
An immaculately presented, two double bedroom apartment, located on the ground floor of a popular residential building, the flat comes with a designated underground parking space.

Greycoat House is located in a pretty tree lined street between Vincent Square and Victoria Street, which offers an array of shops, bars and restaurants.

Features

- Ground Floor
- Underground Parking
- Share of Freehold
- Quiet Location
- Close Transport Links
- Excellent Location

Greycoat Street, London, SW1P



Ground Floor

Total area (approx.): 64.4 sq. m (693.2 sq. ft)