



W
WHITES

8 Florence Mews, Wilton, Salisbury, Wiltshire, SP2 0FE

Price Guide £350,000 Freehold

About The Property

A charming modern townhouse in a row of similar properties, built about 15 years ago by Archstone Lifestyle Homes Limited for the over 55s. This is a freehold property laid out on three floors with a shower room or bathroom on each floor, an allocated parking space plus visitors parking and a delightful private sunny, southerly aspect garden. Extremely well designed, the house has the benefit of good insulation, double glazed windows and doors and gas fired central heating. A further benefit is the good range of storage cupboards. One of the great features is that being an end terrace house, the owner has added windows to the west creating a great amount of light. Vacant possession is offered.

Located within a short walk of the market square, the town also has a famous Italianate church, a weekly market, a community centre, doctor's surgery, dentist's practice, post office and a variety of shops. There is a good bus service to Salisbury which is four miles away.

There is a small front garden behind wrought iron railings with a pathway to the front door which has a covered porch. In the hallway there are stairs to the first floor with storage cupboard below and doors to kitchen, reception room and shower room. The reception room is L-shaped with sitting and dining areas which could also be used as a study or sun room. The kitchen has a great range of units with granite work surfaces, one-and-a-half bowl sink unit with mixer tap over, four ring gas hob with extractor hood over, plumbing and space for washing machine, oven, microwave, fridge/freezer and cupboard housing gas boiler for central heating and hot water.

On the first floor are two bedrooms and a bathroom with the master bedroom and ensuite shower room on the top floor.



- End of Terrace
- L-Shaped Reception Room
- Three Bedrooms
- Shower/Bathroom on each floor
- Gas Central Heating
- Easy Maintenance Garden
- Parking both Private & Visitors
- No Chain
- Over 55's Only
- Freehold

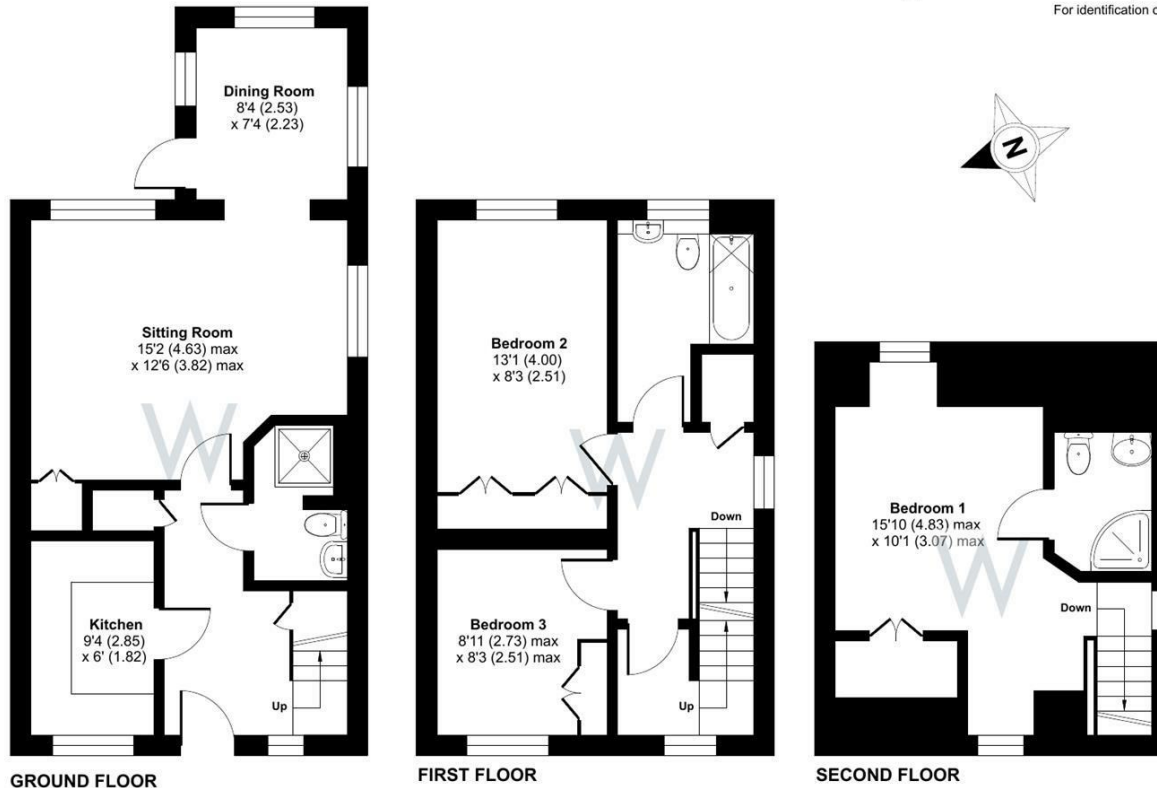




Florence Mews, Wilton, Salisbury, SP2

Approximate Area = 1054 sq ft / 97.9 sq m

For identification only - Not to scale



Floor plan produced in accordance with RICS Property Measurement Standards incorporating International Property Measurement Standards (IPMS2 Residential). © n\checon 2026. Produced for H W White Ltd. REF: 1423681



Further Information

Local authority: Wiltshire Council

Council Tax: D - £2418.22 (2025/2026)

Tenure: Freehold - Florence Mews has been built for the over 55s and the residents have control over maintenance and works which need carrying out. Monthly service charge is £150.75 which includes buildings insurance and an on-site maintenance manager. Ground rent is approximately £297.91 per annum.

Services: Mains gas, electricity, water and drainage.

Heating: Gas central heating with radiators

Directions: From Salisbury take the A36 Wilton Road and at the roundabout turn left on to the A30, through Wilton. Proceed through the traffic lights and after one-quarter of a mile you will see Florence Mews on the left hand side.

What3words: ///pelted.flick.airless

