



Plot 2, Green Lane, South Chailey BN8 4BS

£225,000



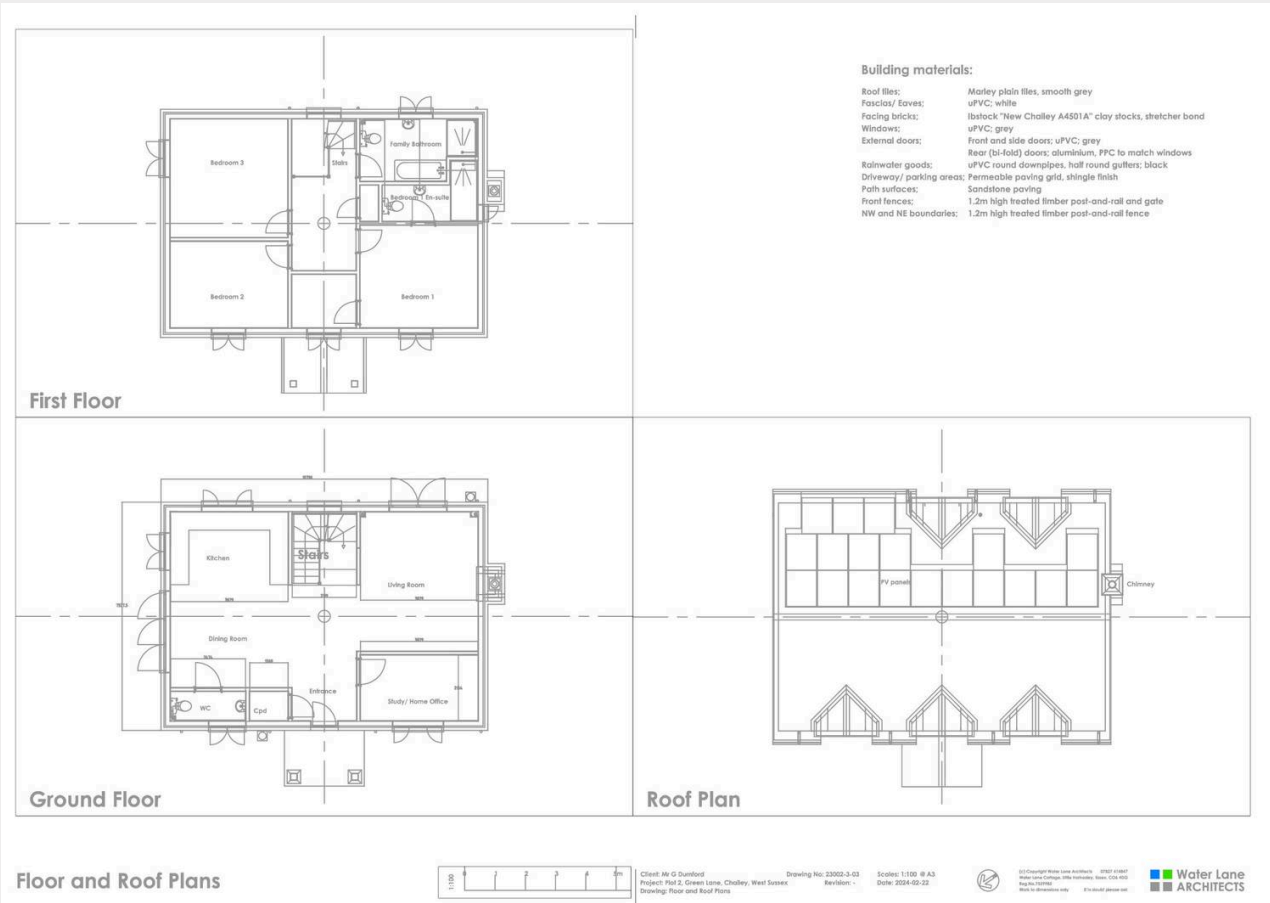
**MANSELL
McTAGGART**
— Trusted since 1947 —

Plot 2, Green Lane

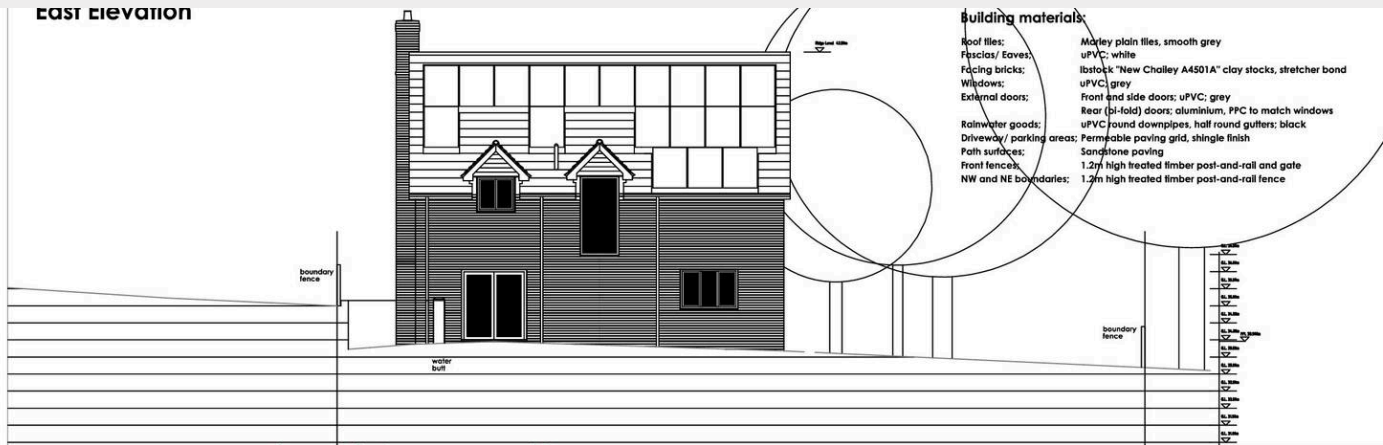
South Chailey

A rare opportunity to buy a PLOT WITH PLANNING PERMISSION (Lewes LW/22/0089 & condition discharges LW/24/0140 & 0141) to build a THREE BEDROOM DETACHED HOUSE with parking for two cars. The house would measure approx 94 sq mt (1,011 sq ft)

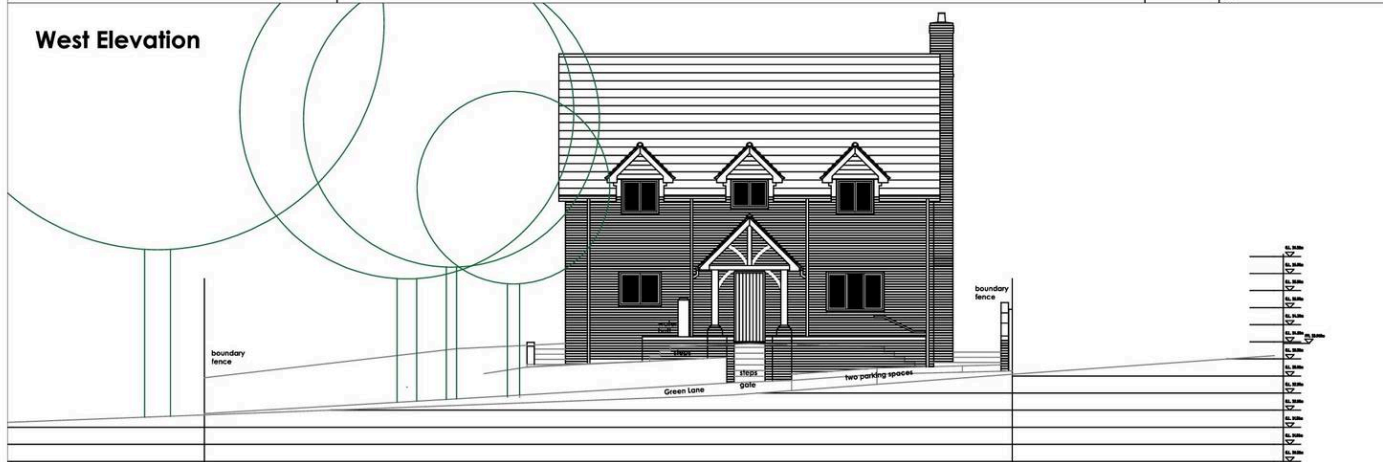
- A PLOT WITH PLANNING CONSENT TO BUILD A THREE BEDROOM DETACHED HOUSE ON THE RURAL FRINGES OF THIS POPULAR VILLAGE



EAST Elevation



West Elevation



Plot 2, Green Lane

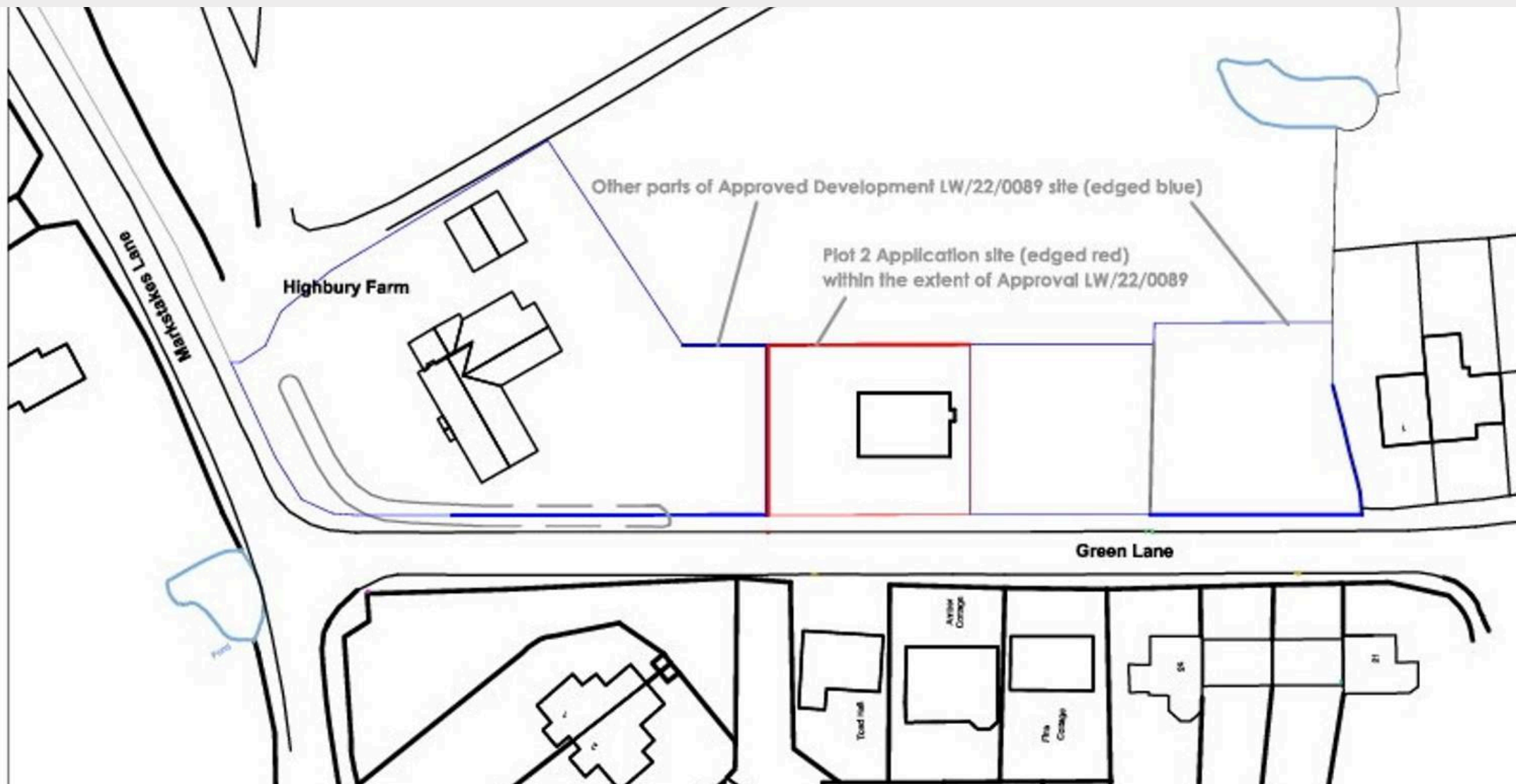
South Chailey

Situated on the fringe of South Chailey being a popular village located approximately 6 miles to the north of Lewes and approximately 6 to 7 miles to the south east of Haywards Heath and Burgess Hill. The village has a shop with post office facilities, a popular secondary school and is surrounded by open countryside.

The hamlet of Chailey Green, 1 mile north, has a church, a pub and a primary school. Plumpton Green has a railway station as does Cooksbridge. Burgess Hill, Lewes and Haywards Heath all have extensive shopping centres, the latter having fast rail services to London (Victoria/London Bridge approx 45 minutes).

DIRECTIONS: From our Newick office on the green head in a westerly direction towards Haywards Heath until reaching the two mini roundabouts at North Chailey. Turn left at the second of these roundabouts taking the A275 south towards Lewes, proceed down this road for a couple of miles until reaching South Chailey. Turn left into Markstakes Lane and then immediately right into Green Lane and the plot can be found after a short distance on the left.





Mansell McTaggart Newick

Mansell McTaggart, 3a The Green - BN8 4LA

01825 722288

new@mansellmctaggart.co.uk

www.mansellmctaggart.co.uk/branch/newick

Consumer Protection from Unfair Trading Regulations 2008 We have not tested any apparatus, equipment, fixtures, fittings or services and so cannot verify that they are in working order or fit for purpose. You are advised to obtain verification from your solicitor or surveyor. References to the tenure of a property are based on information supplied by the seller. We have not had sight of the title documents and a buyer is advised to obtain verification from their solicitor. Items shown in photographs are not included unless specifically mentioned within the sales particulars, but may be available by separate negotiation.