



Webbs

Helping people move since 1994

Bow Street | Rugeley | WS15 2DG

£800 PCM

 **Webbs**
estate agents

Summary

Webbs Estate Agents are delighted to offer an immaculately presented top floor apartment in a beautiful Grade II Listed Building. The property has been finished to a high standard and is both conveniently located for Rugeley Town Centre and within a stones throw of the picturesque Elmore Park.

In brief, the accommodation comprises; an entrance hallway with a security intercom system, a spacious open-plan lounge/kitchen/diner, two generous bedrooms, and a modern fitted shower room.

Further benefiting from electric heating and double glazing.

Key Features

Rooms and Dimensions

PROPERTY DETAILS:

Hallway

Kitchen/Lounge

15'1" x 17'5" (4.6 x 5.33)

Bedroom One

13'5" x 8'3" (4.1 x 2.53)

Bedroom Two

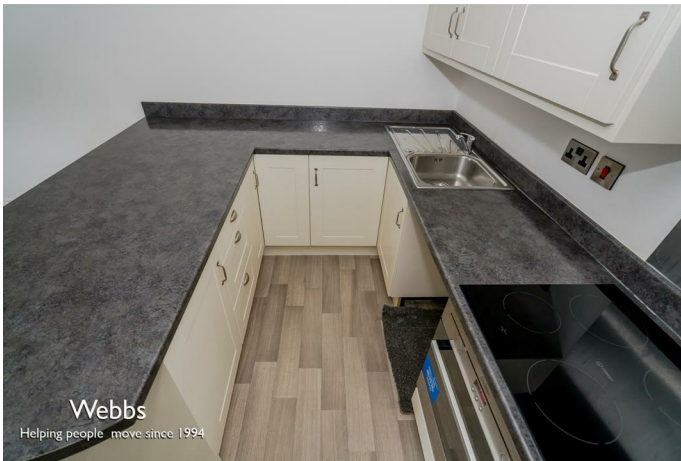
10'1" x 6'6" (3.09 x 2.00)

Bathroom

8'11" x 6'3" (2.72 x 1.93)

TENANCY INFORMATION & IMPORTANT NOTES





Webbs Estate Agents - endeavour to maintain accurate depictions of properties in Virtual Tours, Floor Plans and descriptions, however, these are intended only as a guide and purchasers must satisfy themselves by personal inspection.

