



Campden Grove, W8

£950,000

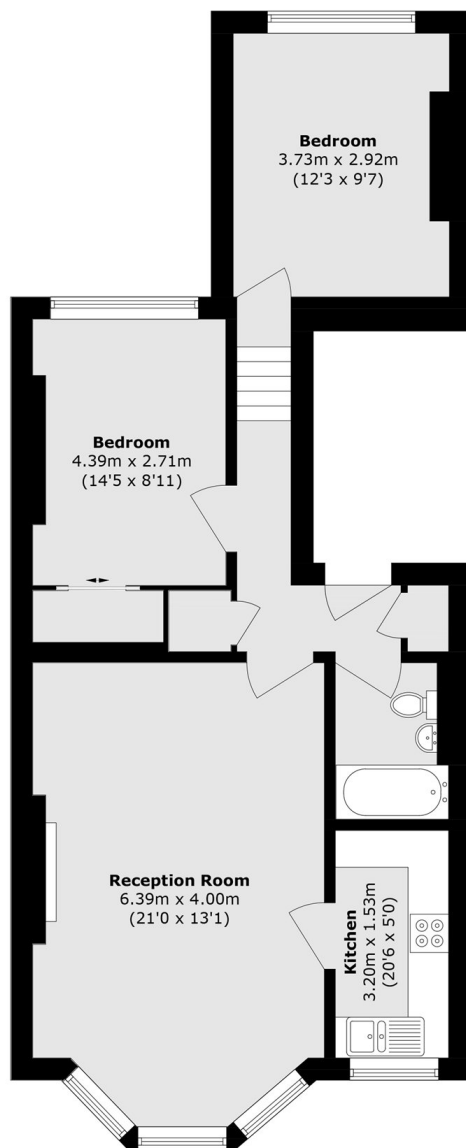
A two double bedroom apartment on the first floor of a Victorian conversion. The reception room has high ceilings, wooden floors, large windows and room to dine. There is a separate fitted kitchen and recently refurbished bathroom, overall a fabulous home for anyone looking for period features in a prime location.

Walking distance from both Notting Hill and High Street Kensington, great for commuting (via the Central, District and Circle lines) and taking advantage of all of the restaurants, shops and bars the areas has to offer.

Features

First Floor Flat
Victorian Conversion
High Ceilings
Two Double Bedrooms
Separate Kitchen
Kensington High Street

Campden Grove, London, W8



First Floor

Total area (approx.): 61.6 sq. m (663.0 sq. ft)