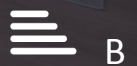




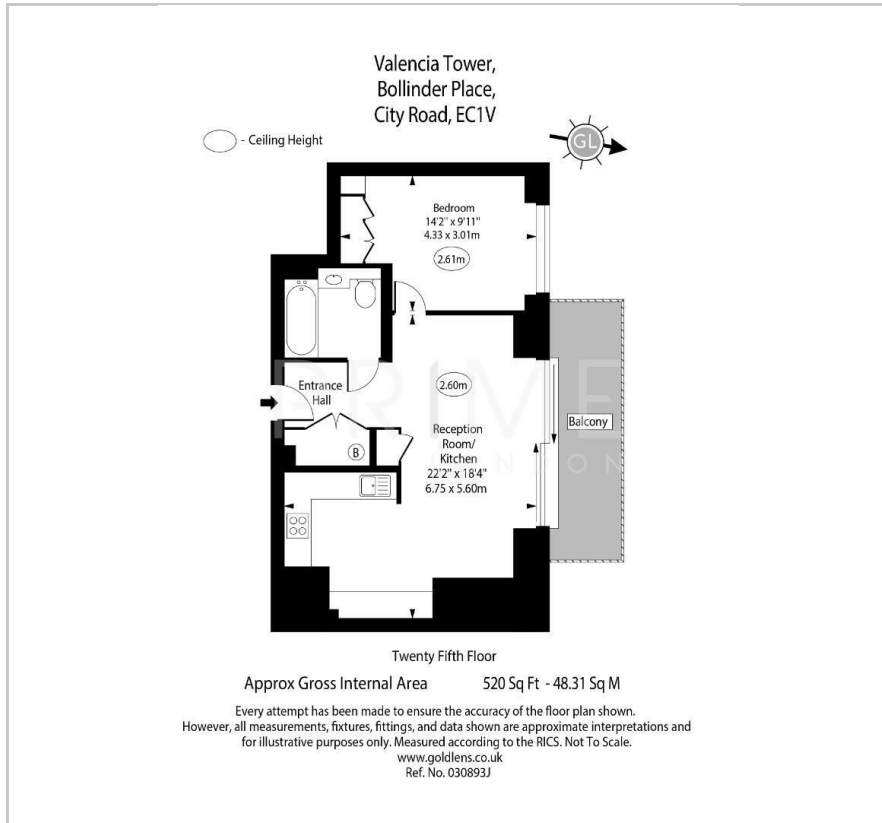
## Valencia Tower

Bollinder Place, 250 City Road, EC1V 2AR

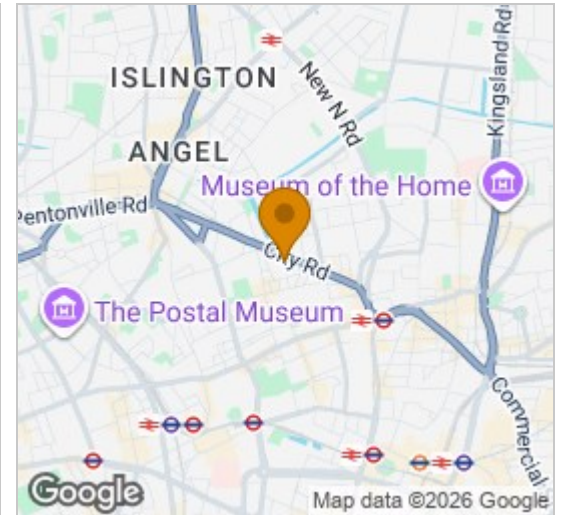
Asking Price £650,000



## Floor Plan



## Area Map



## Energy Efficiency Graph



## Viewing

By appointment. Contact us on 0207 052 1075 if you wish to arrange a viewing appointment for this property, or require further information.

- High floor apartment
- 518 sq ft (48 sqm)
- Residents' swimming pool and gym
- Comfort cooling
- 24 hour concierge

This well designed 518 sq ft (48 sqm) apartment, on a high floor in the excellently located Valencia Tower at 250 City Road, is available to purchase through Prime London.

Comprising an open plan living area, fully fitted kitchen, double bedroom and bathroom, the apartment also boasts a large private balcony.

Residents' enjoy world class facilities, including a gym, 20 metre pool, hydrotherapy pool, sauna, steam room, screening room, residents' and business lounges, and a 24 hour concierge. The development also offers shops, restaurants, cafés, workspaces, and landscaped gardens.

Ideally located between Angel and Old Street, the apartment is within walking distance of Shoreditch, the City, and top universities. Old Street and Angel stations (Northern Line) provide direct links to King's Cross, London Bridge, and Canary Wharf.



These particulars, whilst believed to be accurate are set out as a general outline only for guidance and do not constitute any part of an offer or contract. Intending purchasers should not rely on them as statements of representation of fact, but must satisfy themselves by inspection or otherwise as to their accuracy. No person in this firm's employment has the authority to make or give any representation or warranty in respect of the property.