



Apartment 29 Whinfell Court, Whirlow, Sheffield, S11 9QA

Saxton Mee

Apartment 29 Whinfell Court Whirlow

Offers Around

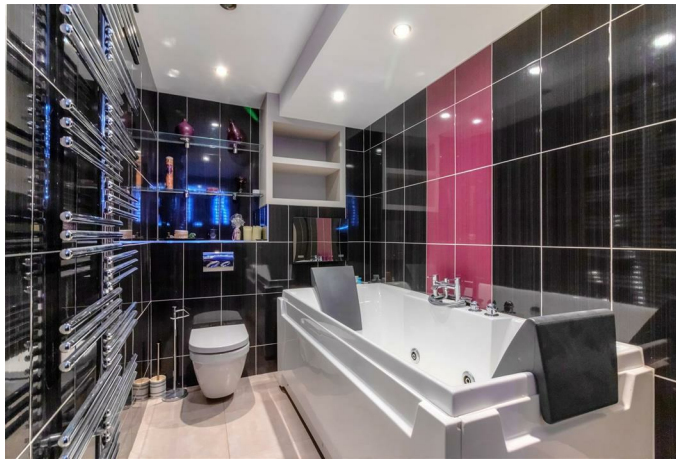
£510,000

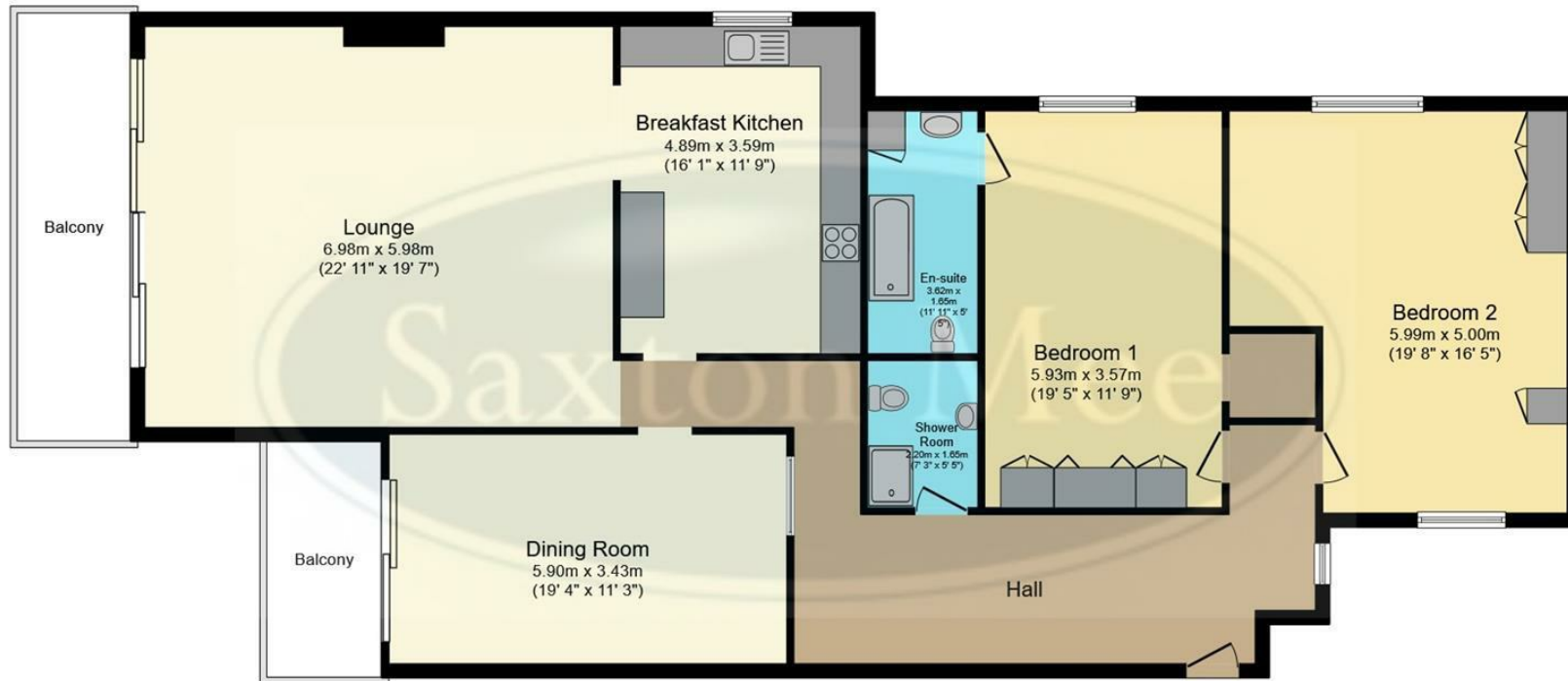
Nearly 2,000 sq ft of accommodation – one of the largest apartments at Whinfell Court, enjoying a private balcony, open views and an exceptional lifestyle setting.

Occupying a prime first-floor position within this exclusive development, this exceptionally spacious and upgraded two/three bedroom, two bathroom apartment offers not just a home but an outstanding lifestyle opportunity.



- Nearly 2,000 sq.ft – one of the largest apartments at Whinfell Court
- Flexible layout – spacious 2 bedroom or easily reinstated 3 bedroom configuration
- Large private balcony with far-reaching open views
- Overlooking the beautiful Whinfell Quarry Gardens
- Exclusive development with residents' leisure complex and swimming pool
- Light-filled sitting and dining rooms both opening onto the balcony
- Stylish breakfast kitchen with integrated appliances
- Generous master suite with luxury en suite bathroom
- Beautifully maintained communal gardens, garage and visitor parking
- On the edge of the Peak District, close to Whirlow Park and stunning countryside





Floor Plan

Total floor area 184.5 m² (1,986 sq.ft.) approx

This plan is for illustration purposes only and may not be representative of the property. Plan not to scale. Powered by PropertyBox

While we endeavour to make our sales particulars fair, accurate and reliable, they are only a general guide to the property and, accordingly, if there is any point, which is of particular importance to you, please contact the relevant office. The Agents have not tested any apparatus, equipment, fittings or services and so cannot verify they are in working order. The buyer is advised to obtain verification. Please note all the measurement details are approximate and should not be relied upon as exact. All plans, floor plans and maps are for guidance purposes only and are not to scale. Under no circumstances should they be relied upon as exact or for use in planning carpets and other such fixtures, fittings or furnishings. YOUR HOME IS AT RISK IF YOU DO NOT KEEP UP REPAYMENTS ON A MORTGAGE OR OTHER LOAN SECURED ON IT. 'A Life Assurance policy may be requested.' 'Written Quotations of credit terms available on request.'

Banner Cross
T: 0114 268 3241
E: bannercross@saxtonmee.co.uk
www.saxtonmee.co.uk

Hathersage
T: 01433 650009
E: hathersage@saxtonmee.co.uk

Bakewell
T: 01629 815307
E: bakewell@saxtonmee.co.uk

Matlock
T: 01629 828250
E: matlock@saxtonmee.co.uk

Saxton Mee