

11 BOLLAND PROSPECT
CLITHEROE
BB7 1JU

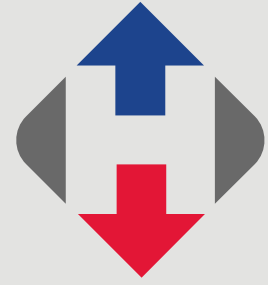
£129,950



- Attractive ground floor apartment
- Spacious lounge
- Kitchen & utility/porch
- 2 bedrooms
- 3-piece shower room
- Good-sized shared garden areas
- Gas CH & PVC double glazing
- 61 m2 (652 sq ft) approx.

honeywell.co.uk

A lovely ground floor apartment which offers great accommodation, is close to the town centre and has the use of wonderful garden areas. There is a central hallway, spacious lounge with fireplace and door leading to the kitchen with white gloss units and an integrated oven and hob. Off the kitchen is a rear porch or utility with space for a freezer and tumble dryer. The master bedroom is at the rear and overlooks the garden, and the second bedroom is at the front; both have fitted wardrobes. There is also a 3-piece shower room.



The apartments on Bolland Prospect have shared garden areas, this apartment has the use of a lovely, shared garden space with lawns, boundary hedging, a stone paved patio and decked patio with pergola. The property is ideal for a buyer looking for ground floor living with outside space. Viewing is recommended.

LOCATION: Travelling along Shawbridge Street, pass Lidl on the right-hand side, turn second right into Hayhurst Street and then first left into Bolland Prospect. The apartment can be found on the left-hand side.

ACCOMMODATION: (Imperial dimensions in brackets: all sizes approximate):-

ENTRANCE: Through PVC front door into:

HALLWAY: With good-sized understairs storage cupboard with electric, light and coat hooks.

LOUNGE: 4.1m x 4.3m (13'5" x 14'1"); with coved cornicing, television point, feature fireplace housing 'Living Flame' coal effect gas fire with marble hearth and inset and wooden surround.

KITCHEN: 3.3m x 2.6m (10'11" x 8'6"); with a fitted range of white gloss wall and base units with complementary wood effect laminate work surface and tiled splashback, one-and-a-half bowl stainless steel sink unit with mixer tap, integrated electric fan oven, 4-ring induction hob, space for

fridge-freezer, plumbing for a washing machine and wall-mounted Worcester central heating boiler.

PORCH/UTILITY SPACE: 1.4m x 2.9m (4'6" x 9'5"); with half-glazed PVC door to rear garden and space for freezer and tumble dryer.

BEDROOM ONE: 2.6m x 3.6m (8'8" x 11'10"); with a range of fitted wardrobes and fitted shelving with attractive outlooks across the rear garden.

BEDROOM TWO: 3.2m x 2.2m (10'5" x 7'1"); with windows to front and side elevation and built-in wardrobe.

SHOWER ROOM: 3-piece suite in white comprising a low suite w.c. with push button flush, pedestal handwash basin with chrome taps, corner shower enclosure with fitted Triton electric shower and part-tiled walls.





OUTSIDE: The property has use of shared gardens with lawns, paved patio and decked area with pergola. There is an outside light and outside store.

HEATING: Gas fired hot water central heating system complemented by sealed unit double glazing in PVC frames.

SERVICES: Mains water, electricity, gas and drainage are connected.

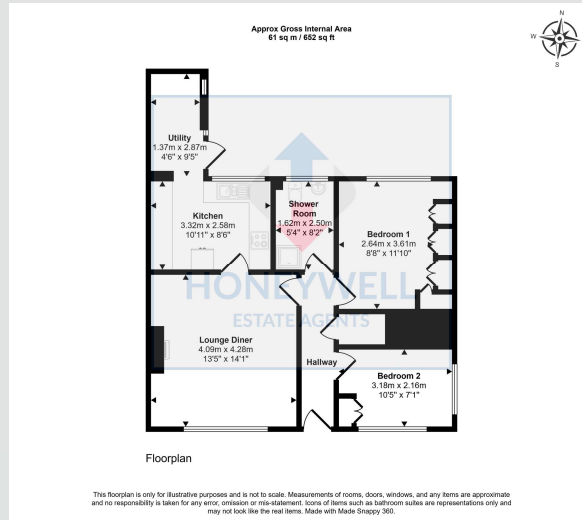
COUNCIL TAX BAND A.

SERVICE CHARGE: There is a service charge of £30.15 per month which covers the exterior maintenance of the property and building's insurance.

VIEWING: By appointment with our office.

SELLING YOUR OWN HOUSE? We will be happy to provide free valuation and marketing advice, without obligation - please ask for details.





11 Bolland Prospect, Clitheroe, BB7 1JU
CD/CJ/051225

Selling Your House? We will be happy to provide free valuation and marketing advice, without obligation - please ask for details

1 Castlegate, Clitheroe. BB7 1AZ
T: 01200 426041 E: houses@honeywell.co.uk

 HoneywellEstateAgents

 HoneywellAgents



honeywell.co.uk

Please note: These particulars are produced in good faith, but are intended to be a general guide only and do not constitute any part of an offer or contract. No person in the employment of Honeywell Estate Agents Ltd has any authority to make any representation or warranty whatsoever in relation to the property. Photographs are reproduced for general information and do not imply that any item is included for sale with the property.