

HOLLAND PARK AVENUE, W11



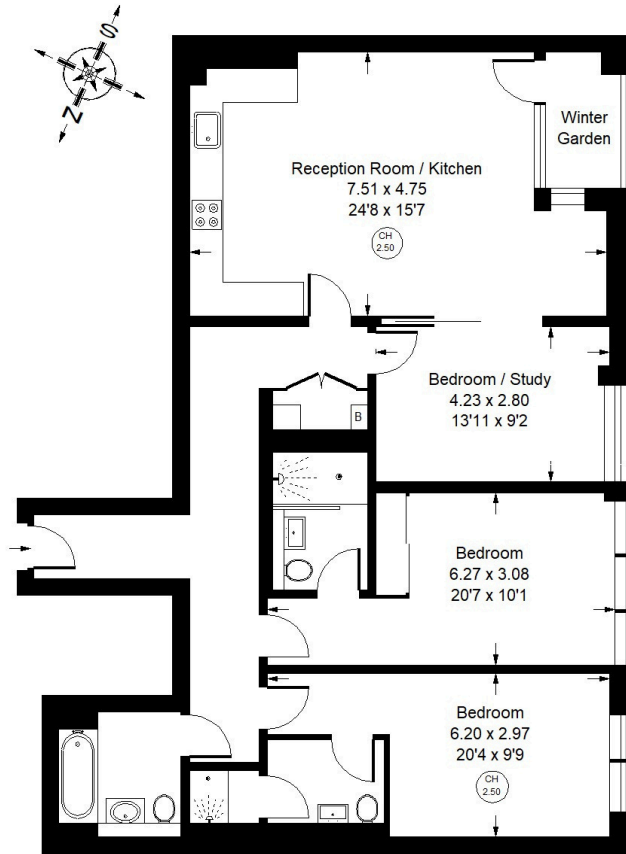


Holland Park Avenue, W11

A superbly presented and modern three bedroom, three bathroom apartment offering over 1,200 sq ft of well-designed living space, set within a well-maintained portered building in a prime West London location. Finished to an immaculate standard throughout, the property provides bright, contemporary interiors with generous proportions. The versatile third bedroom can be used as a study or dining room, with the option to be closed off for privacy or opened to extend the reception space, creating an ideal layout for both entertaining and everyday living. Ideally located moments from Shepherds Bush station, Westfield Shopping Centre, White City and Soho House, and within easy reach of Holland Park, the property benefits from excellent transport links, world-class amenities, and beautiful green open spaces nearby.



Approx. Gross Internal Area
= 116 sq m / 1,249 sq ft



First Floor



Holland Park Avenue, W11 - Leasehold Local Authority - Royal Borough of Kensington & Chelsea

- Three Double Bedrooms
- Three Bathrooms
- Large Reception Room
- Private Winter Garden
- Portered Building
- Close to Holland Park
- EPC = B
- Council Tax Band = G



Whilst every attempt has been made to ensure the accuracy of the floor plan, measurements are approximate and not to scale. No guarantee is given on the total square footage of the property quoted on the plan. Figures given are for guidance. Plan is for illustration purposes only, not to be used for valuations.