



Embassy House, West Hampstead, NW6
£800,000

Flat 41

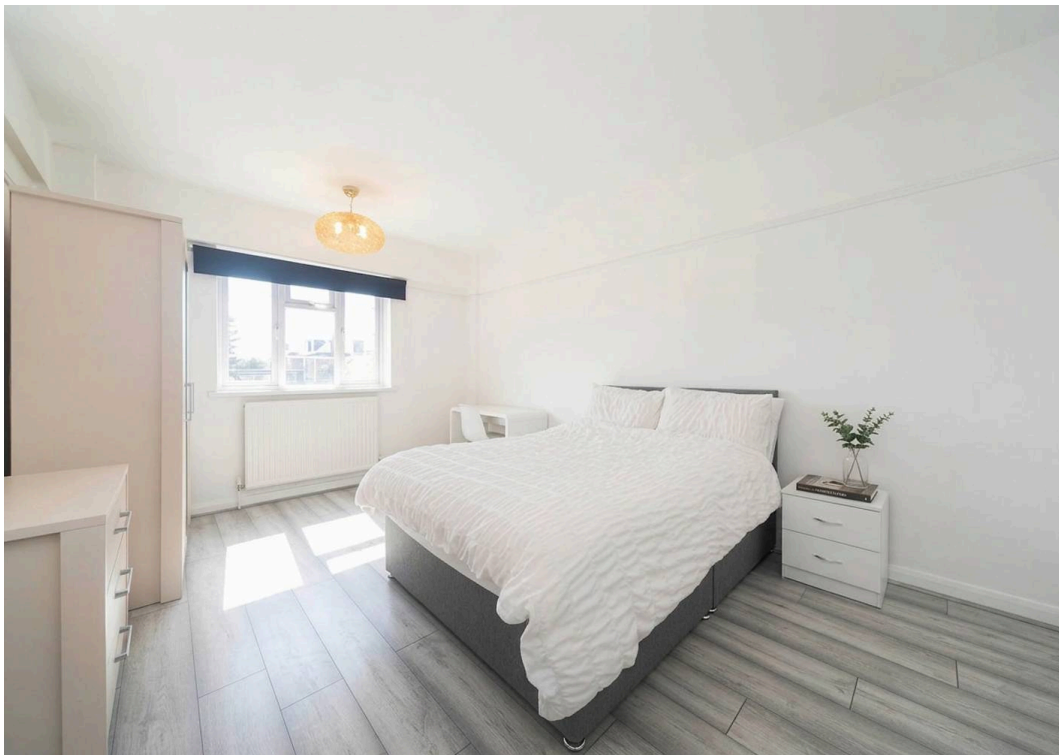
A spacious four double bedroom apartment set within the iconic Embassy House, a striking Art Deco building in the heart of West Hampstead.

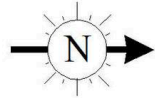
This well-proportioned property benefits from a long lease and offers generous accommodation throughout, comprising four good-sized double bedrooms, a family bathroom, and a separate WC. The home further features a large kitchen and a bright, expansive separate lounge—ideal for both relaxing and entertaining.

Residents enjoy access to well-maintained communal gardens and the convenience of an on-site porter, adding to the appeal of this characterful development.

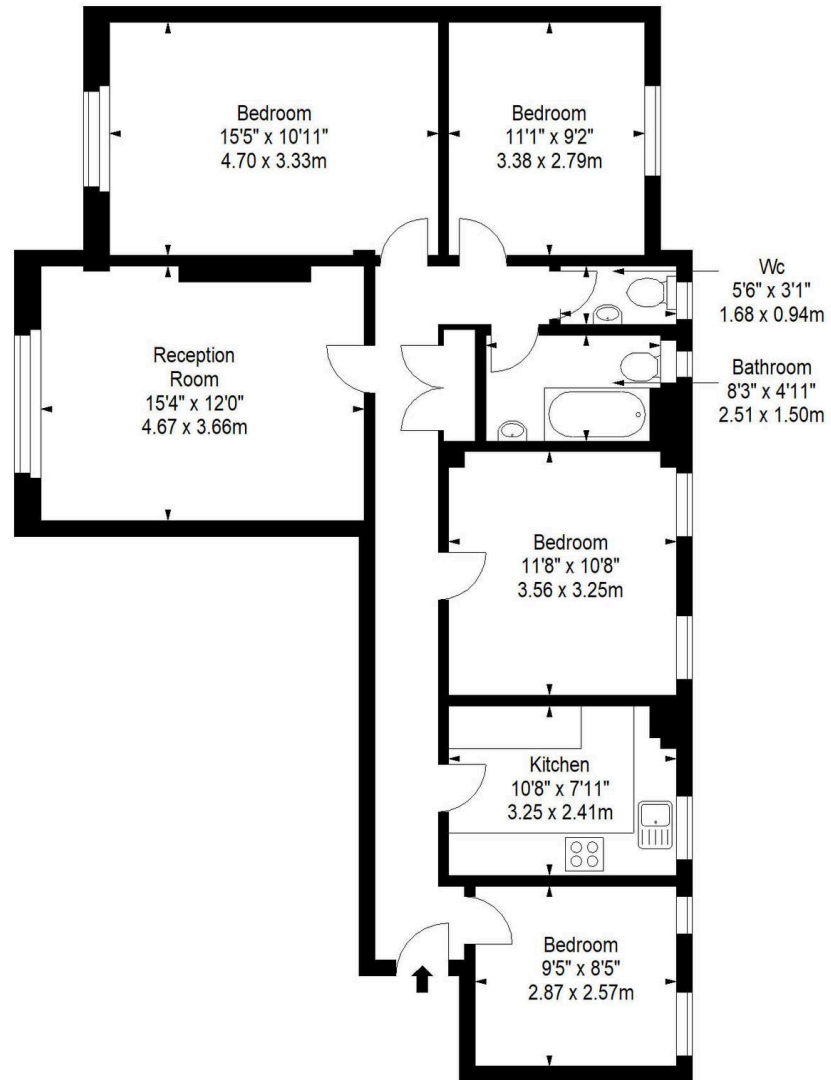
Perfectly positioned for easy access to local amenities, transport links, and the vibrant lifestyle of West Hampstead, this property represents an excellent opportunity for buyers seeking exceptional space for value. It also makes a compelling investment, with strong rental demand and impressive potential yields.







Embassy House, NW6
Approx. Gross Internal Area *
993 Ft² - 92.25 M²



Second Floor

Every attempt has been made to ensure the accuracy of this floor plan however, measurements are approximate and for illustration purposes only. Measured in accordance with the RICS code of measuring practice. Not to scale



Black Katz

22 West Hampstead Mews, London - NW6 3BB

02073285000 • Thomas@blackkatz.com • blackkatz.com/