



Cheyne Row, SW3

£495,000

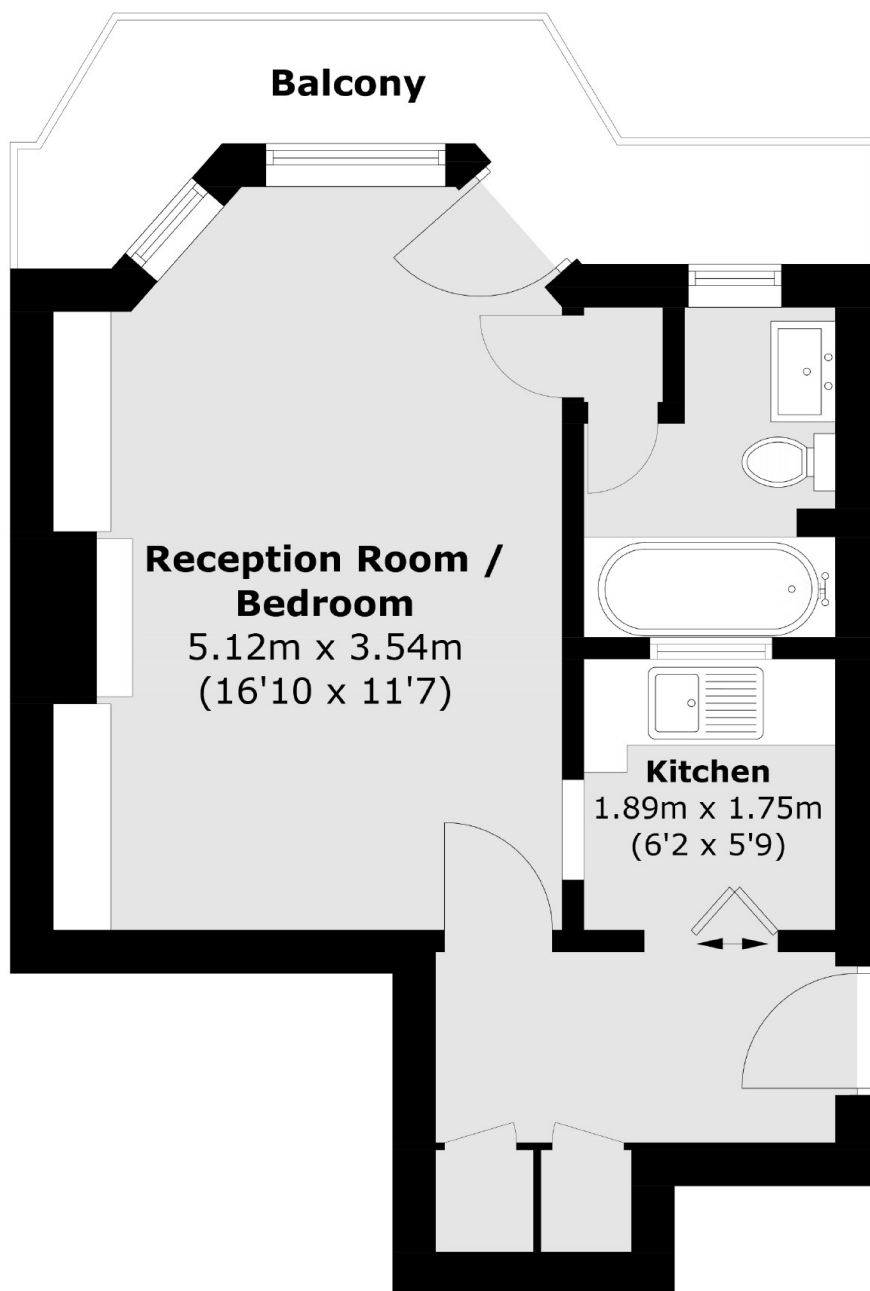
A studio apartment located in a picturesque part of Chelsea. Located on the first floor of a handsome building, this property would be an ideal investment or pied-à-terre.

Cheyne Row is one of the historic and atmospheric streets in the heart of Chelsea, located between Chelsea Embankment and the King's Road. It is within easy reach of the King's Road and its many amenities.

Features

- Share of Freehold
- Low Service Charge
- First Floor
- Balcony
- Quiet Location
- Studio Apartment

Cheyne Row, London, SW3



First Floor

Total area (approx.): 30.9 sq. m (322.6 sq. ft)
Balcony : 5.9 sq. m (63.5 sq. ft)

Dexters

Chelsea and Belgravia
45 Sloane Avenue
London
SW3 3DH
Sales
020 7590 9510

Energy Rating: E. We aim to make our particulars both accurate and reliable. However they are not guaranteed; nor do they form part of an offer or contract. If you require clarification on any points then please contact us, especially if you're traveling some distance to view. Please note that appliances and heating systems have not been tested and therefore no warranties can be given as to their good working order.

 **RICS** | Regulated
Estate Agent
and Letting Agent

dexters.co.uk