

Highbury Grove, N5

£2,000 Per week

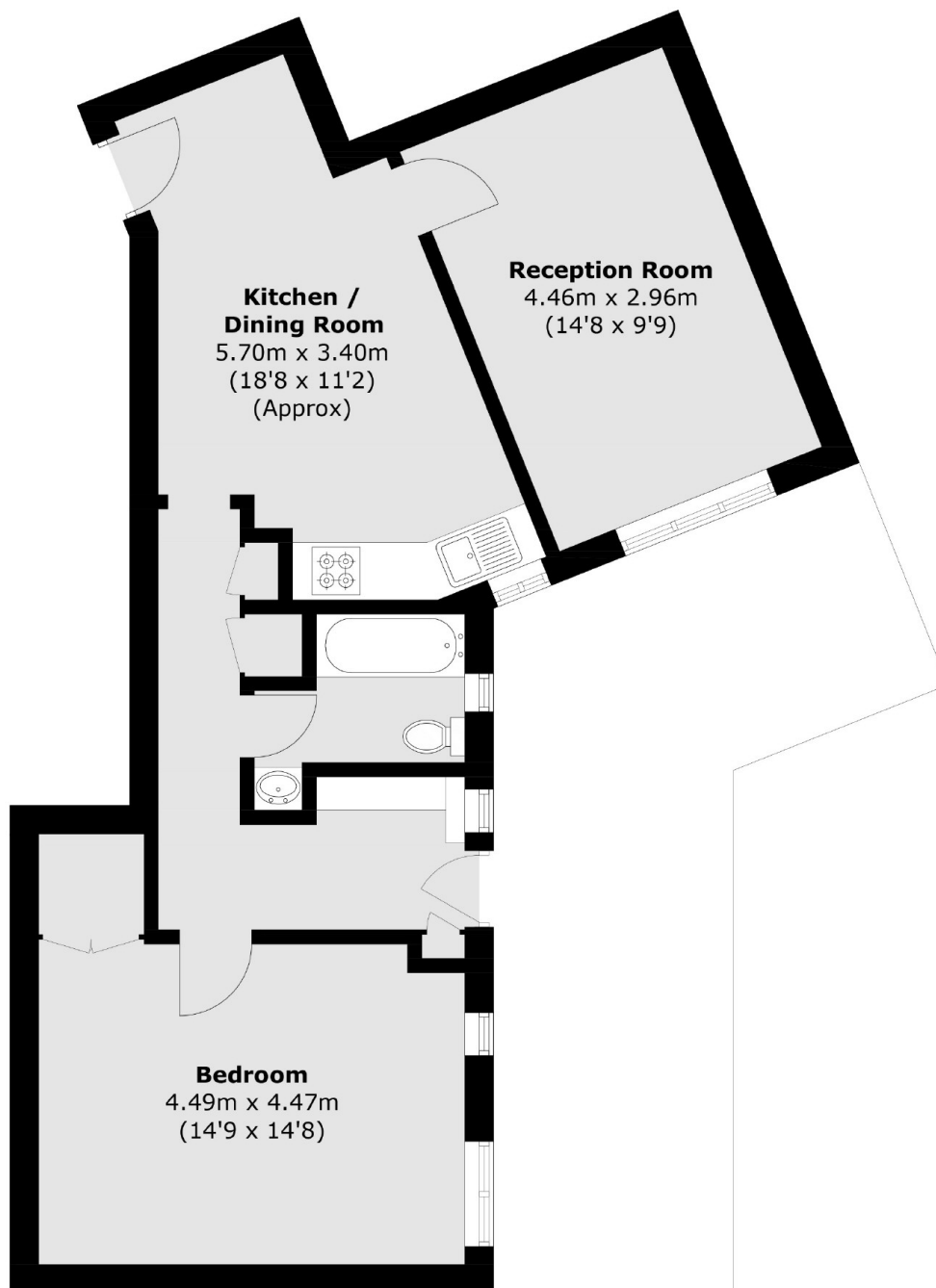
A lateral one bedroom apartment with a private garden on Highbury Grove. This flat benefits from a private entrance, a separate kitchen and living room

Highbury Grove Court is ideally located for access to Highbury and Islington station (Victoria and Overground lines), as well as the many bars, cafés and restaurants of either Upper Street or Highbury Barn. For green space, popular Highbury Fields is just a short walk away.

Features

- One Bedroom
- Private Garden
- Separate Kitchen
- Wooden Floors Throughout
- Amazing Location
- Shed Storage

Highbury Grove, London, N5



Lower Ground Floor

Total area (approx.): 58.6 sq. m (630.8 sq. ft)

Dexters

Islington
76 Upper Street
London
N1 0NU
Lettings
020 7483 6374

Energy Rating: D. We aim to make our particulars both accurate and reliable. However they are not guaranteed; nor do they form part of an offer or contract. If you require clarification on any points then please contact us, especially if you're traveling some distance to view. Please note that appliances and heating systems have not been tested and therefore no warranties can be given as to their good working order.

 **RICS** | Regulated
Estate Agent
and Letting Agent

[dexters.co.uk](https://www.dexters.co.uk)