



## Moses Row, £185,000

- Fully refurbished to a modern standard throughout
- Two Bedroom Cottage!
- Opposite to Melincourt Waterfalls!
- Off road parking!
- Log Burner & Range Cooker
- EPC Rating: D



 2  1  1



## About the property

Situated on the popular Moses Row in Melincourt, this beautifully refurbished two-bedroom cottage offers stylish modern living with character features throughout, walking distance to the Melincourt Waterfalls. Internal viewings are highly recommended to appreciate this charming cottage home!





## Accommodation

### Lounge

21' 1" x 13' 7" ( 6.43m x 4.14m )

### Kitchen

12' 9" x 8' ( 3.89m x 2.44m )

### Bedroom One

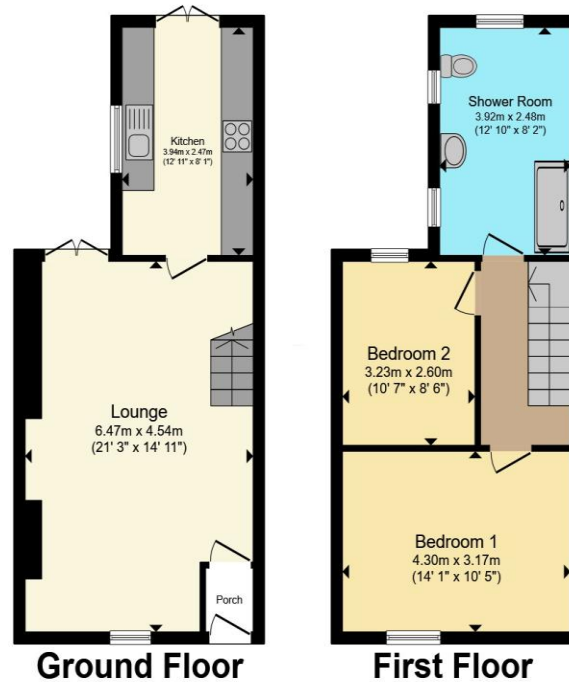
13' 10" x 10' 6" ( 4.22m x 3.20m )

### Bedroom Two

10' 7" x 8' 5" ( 3.23m x 2.57m )

### Family Bathroom

## Floorplan



Total floor area 74.9 m<sup>2</sup> (807 sq.ft.) approx

This floor plan is for illustrative purposes only. It is not drawn to scale. Any measurements, floor areas (including any total floor area), openings and orientation are approximate. No details are guaranteed, they cannot be relied upon for any purpose and they do not form part of any agreement. No liability is taken for any error, omission or misstatement. A party must rely upon its own inspection(s). Powered by [www.propertybox.io](http://www.propertybox.io)

## Important Information

Note while we endeavour to make our sales details accurate and reliable, if there is any point which is of particular interest to you, please contact the office and we will be pleased to confirm the position for you. We have not personally tested any apparatus, equipment, fixtures, fittings or services and cannot verify they are in working order or fit for their purposes. Nothing in these particulars is intended to indicate that carpets or curtains, furnishings or fittings, electrical goods (whether wired or not). Gas fires or light fittings or any other fixtures not expressly included form part of the property offered for sale. This computer generated Floorplan, if applicable, is intended as a general guide to the layout and design of the property. It is not to scale and should not be relied upon for dimensions. Tenure: We cannot confirm the tenure of the property as we have not had access to the legal documents. The buyer is advised to obtain verification from their solicitor or surveyor.