



Leigh Road

Leigh-on-Sea

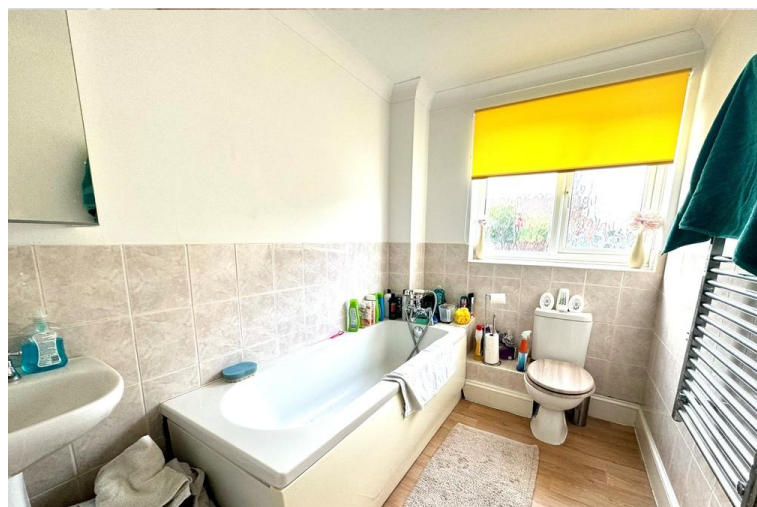
- GROUND FLOOR APARTMENT
- ONE BEDROOM
- LONG LEASE
- COMMUNAL GARDEN



Guide Price £210,000 to £230,000

SUPER LOCATION! Being just a stroll away from the Broadway plus both Leigh & Chalkwell C2C Station's, this **ONE BEDROOM GROUND FLOOR** apartment is presented to a lovely standard throughout and with 118 years remaining on the lease.





A ground floor flat situated in a prime location on Leigh Road, within a short stroll to the Broadway with all its amenities that include restaurants, bars, and many more.

The purpose built block offers an allocated parking space, communal gardens and an entry phone system to gain access in to the block.

The ground floor one bedroom apartment itself offers a large and well presented living room, a fitted kitchen with modern gloss kitchen units both wall-mounted and base level comprising; four ring burner induction hob with stainless steel extractor over and an integrated oven. The bathroom features a three piece bathroom suite that includes a bathtub with shower attachment, a pedestal hand wash basin and a low level w/c.

HALL

LIVING ROOM

14' 9" x 9' 8" (4.5m x 2.95m)

BEDROOM ONE

14' 0" x 10' 7" (4.27m x 3.23m)

BATHROOM

9' 2" x 6' 1" (2.79m x 1.85m)

ALLOCATED PARKING

COMMUNAL GARDEN

TENURE

LEASEHOLD - 118 YEARS REMAINING

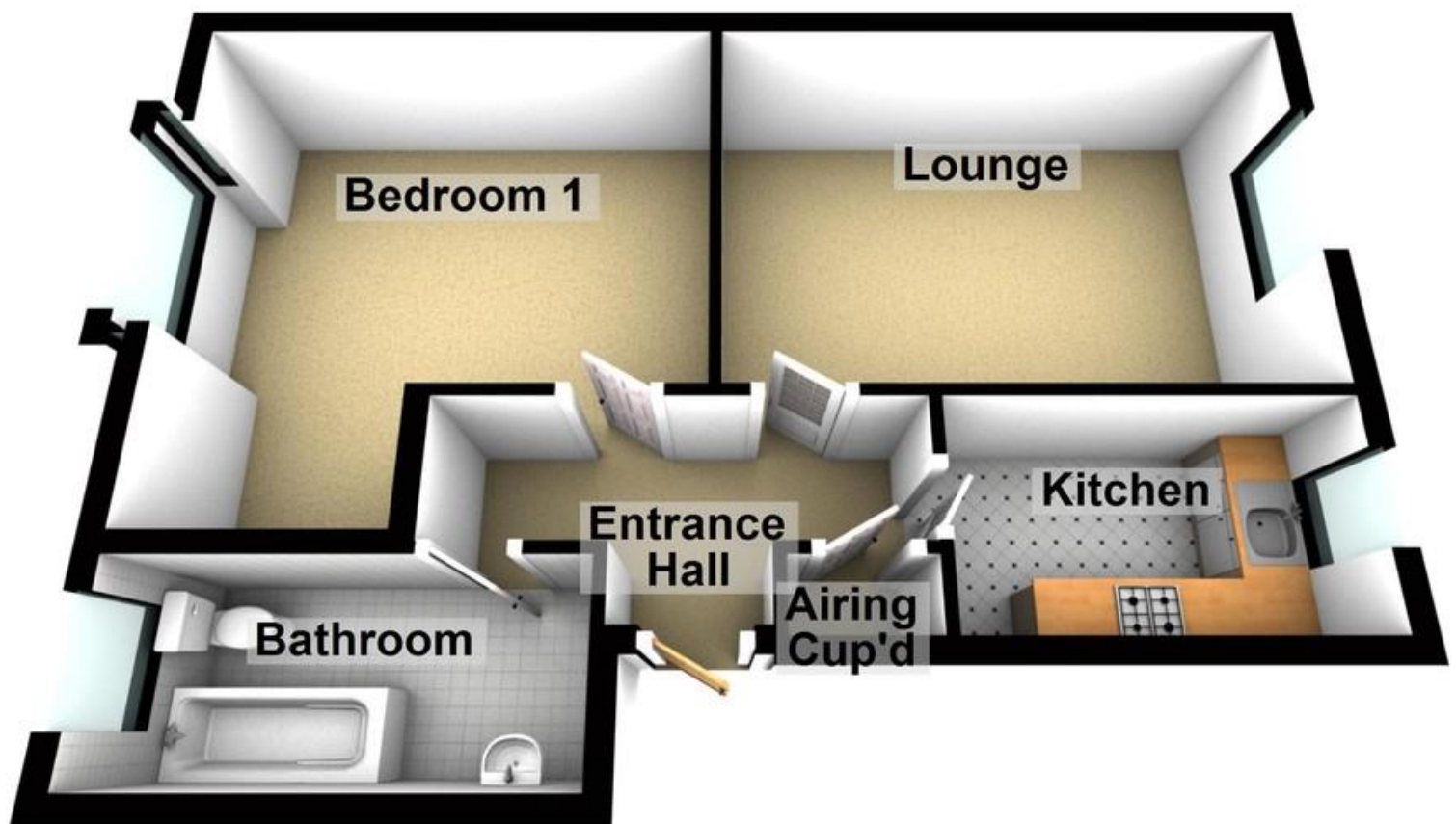
SERVICE CHARGE & GROUND RENT CHARGES - £1400 PER ANNUM

COUNCIL TAX BAND B

EPC RATING D

These particulars are accurate to the best of our knowledge but do not constitute an offer or contract. Photos are for representation only and do not imply the inclusion of fixtures and fittings. The floor plans are not to scale and only provide an indication of the layout.

Ground Floor



Regulated by RICS

t. 01702 34 11 77
More than an estate agent
www.hairandson.co.uk

Residential Sales
190 London Road
Southend-On-Sea
Essex SS1 1PJ

