



Price

£410,000

Freehold

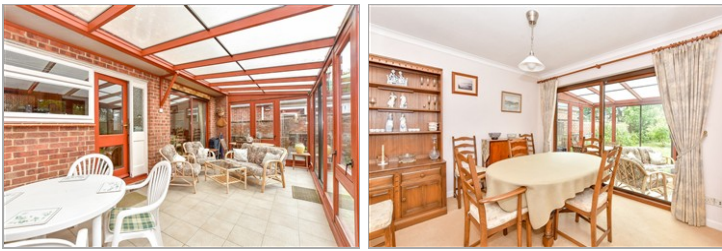
4x  1x  1x 

Silvester Road,
Waterlooville,
Hampshire, PO8

OVER 60?

Secure this property
for up to **59% less!**

cubitt & west
Helping you move forwards



Main features

- Family home set back from the road on a spacious plot
- Potential to extend (STPP) or remodel internally
- Utility room and conservatory
- Highly desirable road close to good schools, local shops and transport links
- Offered with no forward chain

Accommodation

GROUND FLOOR

Entrance Hall

Lounge: 20'9 x 11'9 (6.33m x 3.58m)

Cloakroom

Kitchen: 9'9 x 9'8 (2.97m x 2.95m)

Dining Room: 10'6 x 10'5 (3.20m x 3.18m)

Utility Room: 10'2 x 9'3 (3.10m x 2.82m)

Cloakroom

Conservatory: 22'2 x 9'8 (6.76m x 2.95m)

FIRST FLOOR

Landing

Bedroom 1: 12'3 x 11'4 (3.74m x 3.46m)

Bedroom 2: 10'6 x 10'4 (3.20m x 3.15m)

Bedroom 3: 11'9 x 9'4 (3.58m x 2.85m)

Bedroom 4: 10'1 x 9'8 (3.08m x 2.95m)

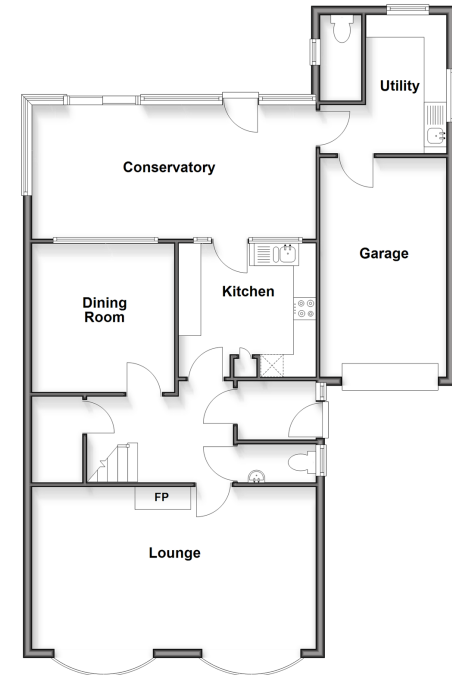
Bathroom

OUTSIDE

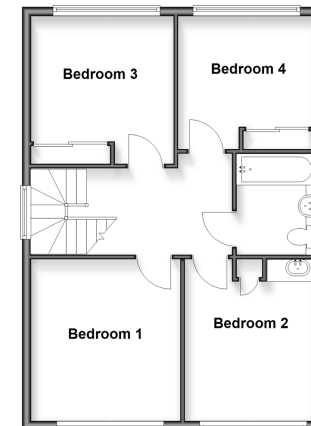
Front and Rear Gardens

Garage and Off Road Parking

Ground Floor
Approx. 101.4 sq. metres (1092.0 sq. feet)



First Floor
Approx. 57.7 sq. metres (621.1 sq. feet)



Call Waterlooville - 02392 267244 ■ cubittandwest.co.uk

- If buying to rent, please check if Local Authority licensing schemes apply before proceeding
- Through a Homewise Home For Life Plan people aged 60+ can secure this property for up to 59% less, by purchasing a Lifetime Lease



42410343/20260603/EH/LS