



Nicholson Square, E3

£500,000

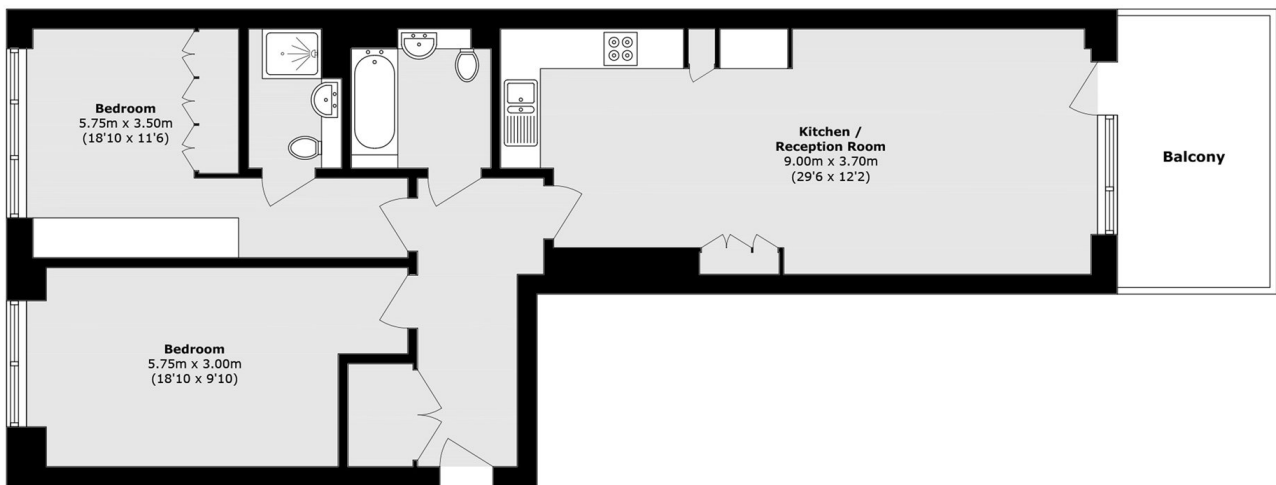
A contemporary two double apartment with views overlooking the River Lea. Situated within a modern, purpose-built block on the third floor with secure underground bike storage on the banks of the river, this well-presented home forms part of a secure gated development. The apartment offers an open-plan living and dining area, connected to a contemporary kitchen. Finished to a high standard throughout, the property also benefits from storage and a private balcony. There are two generous double bedrooms, including a principal bedroom with an en-suite shower room, as well as a modern family bathroom. Ideally located close to Bromley-by-Bow Underground Station, Hackney Wick, and the A12, the property provides excellent transport links into the City, Canary Wharf, and beyond.

The apartment benefits from canal view and is a few minutes away from Bromley-by-Bow Underground station.

Features

- River Views
- Floor To Ceiling Windows
- Two Bathrooms
- Generous Storage Space
- Lift Access
- Communal Garden

Nicholson Square, London, E3



Total area (approx.): 81.2 sq. m (874.0 sq. ft)

Balcony area (approx.): 8.5 sq. m (91.4 sq. ft)