



Chatton Close Wickford, Essex, SS12 9QG Guide Price £450,000

** GUIDE PRICE £450,000 - £465,000 **

Cowling & Payne are delighted to market this 4 bedroom semi-detached house located on the desirable Wick Meadows. This property offers a perfect blend of comfort and modern living, making it an ideal family home.

As you enter, you will be greeted by three reception rooms, providing ample space for relaxation and entertaining guests. Firstly you will find a ground floor office/study, and ground floor wc. Following on, you will then find a living room, leading through to a dining area, with the kitchen adjoining. Lastly the addition of a conservatory allows for an abundance of natural light, creating a warm and inviting atmosphere throughout the day.

This property boasts four generously sized bedrooms, 3 doubles & a single, ensuring that everyone has their own private space. The master benefits from an en-suite shower room. There is also the addition of a 3 piece family bathroom.

Outside, the property features a garage and parking, providing convenience for residents. There is also a private garden to the rear.

- GUIDE PRICE £450,000 - £465,000
- CHAIN FREE
- FOUR BEDROOM FAMILY HOME
- SPACIOUS ACCOMODATION
- GROUND FLOOR STUDY
- CONSERVATORY
- UTILITY ROOM
- COUNCIL TAX BAND - E - BASILDON
- EPC - C
- LIBRARY PHOTOS USED FOR LISTING

Viewing

Please contact our Sales Office on 01268 730707 if you wish to arrange a viewing appointment for this property or require further information.



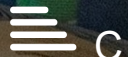
4



3

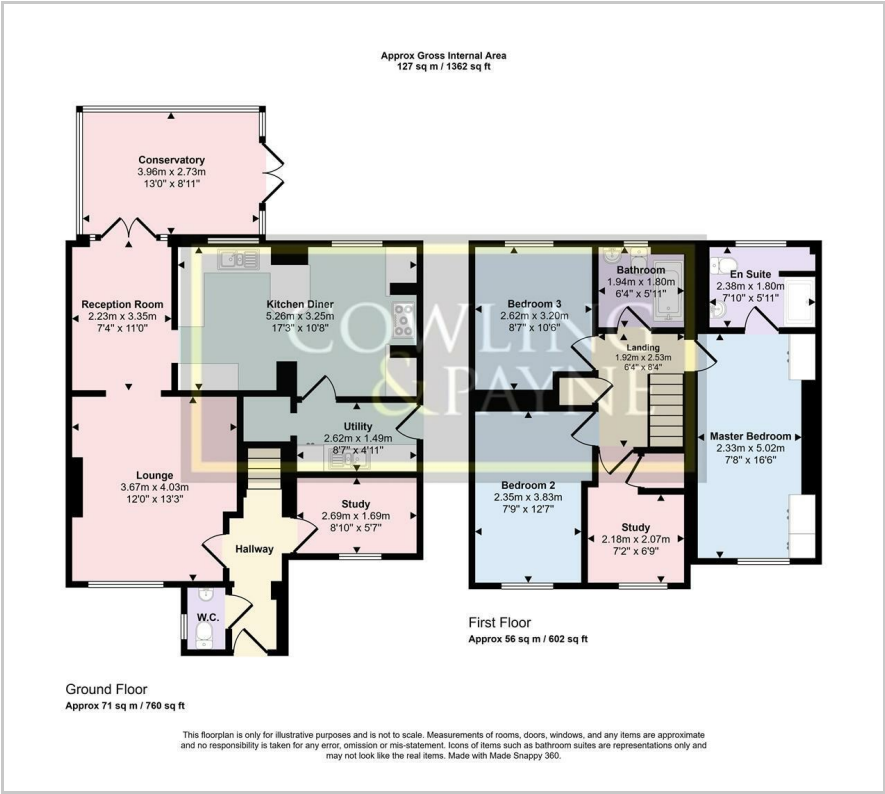


3



C

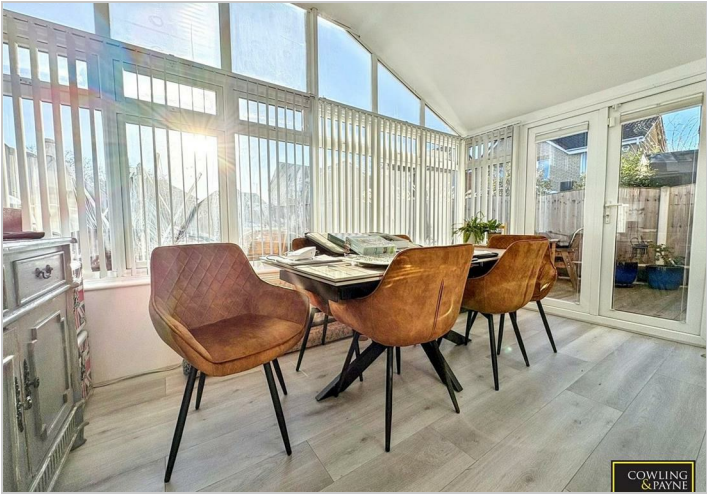
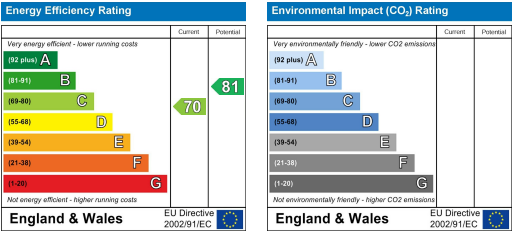
Floor Plan



Area Map



Energy Efficiency Graph



These particulars, whilst believed to be accurate are set out as a general outline only for guidance and do not constitute any part of an offer or contract. Intending purchasers should not rely on them as statements of representation of fact, but must satisfy themselves by inspection or otherwise as to their accuracy. No person in this firms employment has the authority to make or give any representation or warranty in respect of the property.