



# Hickin Street

London, E14

£4,000 per month  
(£923.08 per week)

A well-presented and spacious home featuring a bright reception room, modern fitted kitchen with dining space, multiple well-proportioned bedrooms, a contemporary bathroom, and a private rear garden, ideally located close to local amenities.

**CHESTERTONS**



# Hickin Street

## London, E14

- Spacious and well-presented throughout
- Modern fitted kitchen
- Bright reception room
- Multiple bedrooms
- Contemporary bathroom
- Private rear garden
- Sought-after location

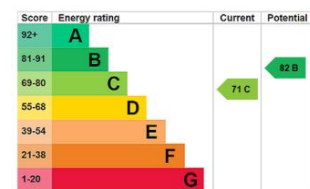


This well-presented and spacious home offers stylish, contemporary living throughout, making it ideal for families, first-time buyers, or investors alike.

Upon entering the property, you are welcomed by a bright and airy hallway leading through to a generous reception room, perfect for relaxing or entertaining. The modern fitted kitchen is a standout feature, offering ample worktop and storage space, along with integrated appliances and a dining area that benefits from plenty of natural light.

The property boasts multiple well-proportioned bedrooms, each

**Minimum Term:** 12 months  
**Deposit Required:** £4,615.38  
**Local Authority:** Tower Hamlets  
**Council Tax Band:** D  
**EPC Rating:** C

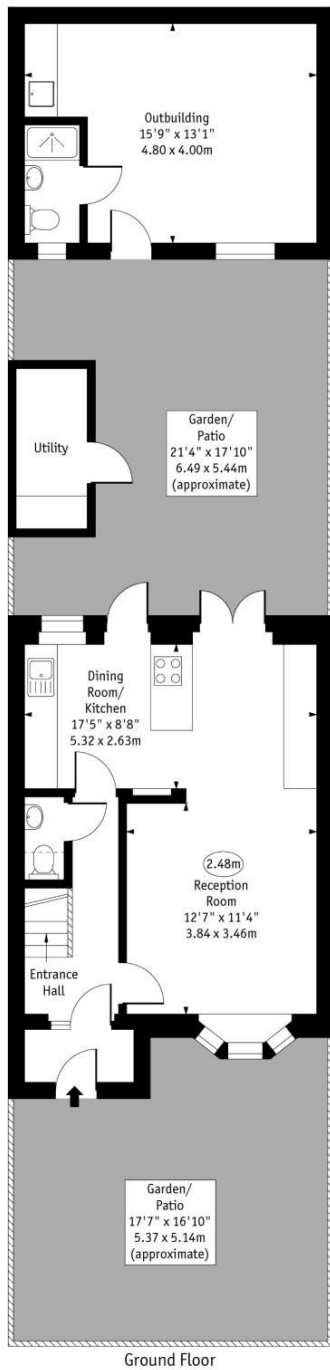


### *Chestertons Canary Wharf & Greenwich Lettings*

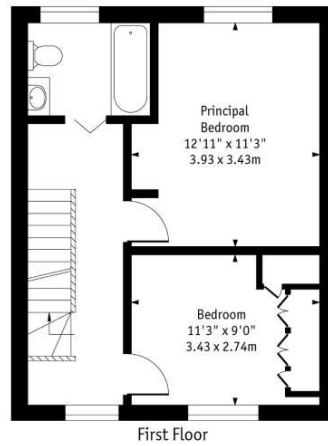
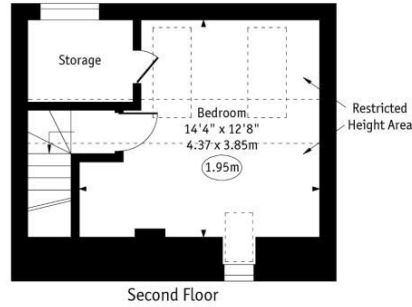
Harbour Island  
 28 Harbour Exchange Square  
 Canary Wharf & Docklands  
 London  
 E14 9GE  
 canarywharflettingsusers@chestertons.co.uk  
 02075108310

Additional tenant charges apply (fees apply to non-AST tenancies only)  
 Tenancy Agreement Fee: £300  
 References per Tenant/Guarantor: £60  
 Inventory check (approx. £100 – £250 inc. VAT)  
 chestertons.co.uk/property-to-rent/applicable-fees

Hickin Street, E14



○ - Ceiling Height



Approx Gross Internal Area    870 Sq Ft - 80.88 Sq M  
 Approx. Floor Area Including Restricted Heights    1055 Sq Ft - 98.00 Sq M  
 (Excluding Utility & Outbuilding)  
 Outbuilding    206 Sq Ft - 19.13 Sq M

Every attempt has been made to ensure the accuracy of the floor plan shown.  
 However, all measurements, fixtures, fittings, and data shown are approximate interpretations and  
 for illustrative purposes only. Measured according to the RICS. Not To Scale.  
 www.goldlens.co.uk  
 Ref. No. 0314783H

Chesterton UK Services Limited trading as Chestertons for themselves and for the vendor of this property whose agents they are, give notice that (i) these particulars do not constitute any part of an offer or contract, (ii) all statements contained within these particulars are made without responsibility on the part of Chestertons or the vendor, (iii) whilst made in good faith, none of the statements contained within these particulars are to be relied upon as a statement or representation of fact, (iv) any intending purchasers must satisfy themselves by inspection or otherwise as to the correctness of each of the statements contained within these particulars, (v) the vendor does not make or give either Chestertons or any person in their employment any authority to make or give representation or warranty whatsoever in relation to this property. Wide angle lenses may be used. ©Copyright Chestertons | Chesterton Global Ltd | Registered Office 5th Floor, The Lantern, 75 Hampstead Road, London, NW1 2PL Registered Company Number 05334580.

