



New Road Avenue, Chatham

£1,350 Per Month


MARTIN & CO

New Road Avenue, Chatham

Date Available: 30th May 2026

Deposit: £1,557

Unfurnished

Council Tax Band: C

- 2 bedroom duplex apartment
- High specification fixtures
- Modern kitchen design
- Utility and cloakroom
- Roll topped bath
- Spacious rooms throughout
- Allocated parking space
- Visitors parking available
- Easy access to Rochester

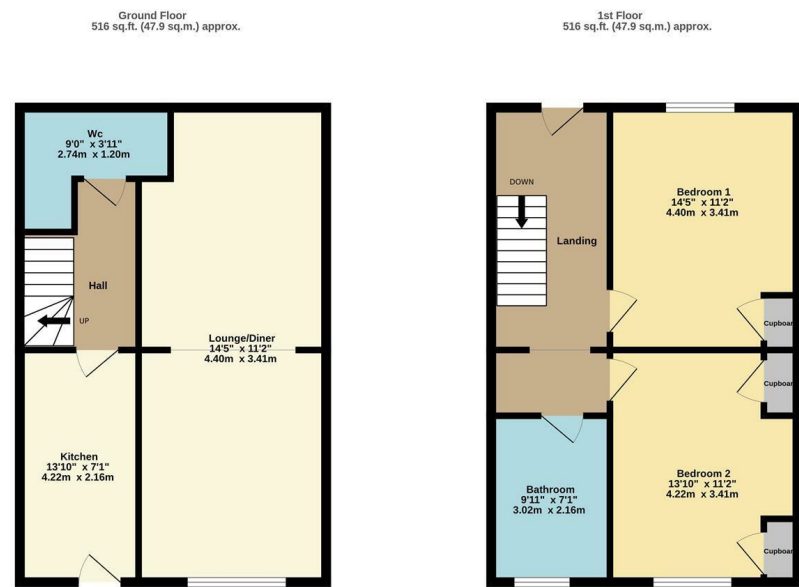
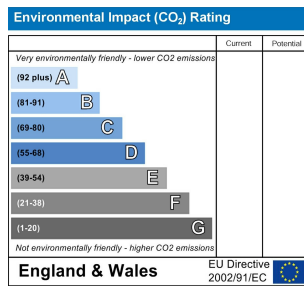
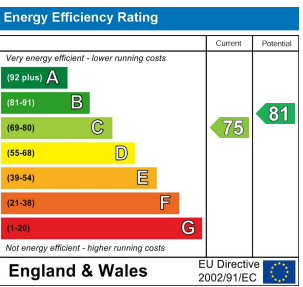
Nested on New Road Avenue in Chatham, this beautifully presented Edwardian duplex apartment offers a perfect blend of modern living and classic charm. With two spacious bedrooms, this property is ideal for couples, small families, or professionals seeking a comfortable home.

Upon entering, you will be greeted by a well-designed reception room that exudes warmth and character, making it a perfect space for relaxation or entertaining guests. The high specification fixtures and fittings throughout the apartment enhance its appeal, ensuring a stylish and contemporary atmosphere.

The modern kitchen is a standout feature, equipped with all the necessary amenities to inspire your culinary adventures. Additionally, the utility and cloakroom provide added convenience, making daily living effortless. The modern bathroom, complete with a luxurious roll-topped bath, offers a serene retreat for unwinding after a long day.

This apartment also benefits from one allocated car parking space, along with visitors parking, ensuring that you and your guests have easy access. The location is particularly advantageous, with easy access to both Rochester and Chatham, providing a wealth of shopping, dining, and leisure options right at your doorstep.

Available for immediate occupancy from early June 2026, this duplex apartment is a rare find in a sought-after area. Do not miss the opportunity to make this charming property your new home.



TOTAL FLOOR AREA : 1032 sq.ft. (95.9 sq.m.) approx.
Whilst every attempt has been made to ensure the accuracy of the Reception contained here, measurements of doors, windows, rooms and any other items are approximate and no responsibility is taken for any error, omission or mis-statement. This plan is for illustrative purposes only and should be used as such by any prospective purchaser. The services, systems and appliances shown have not been tested and no guarantee as to their operability or efficiency can be given.
Made with Metropix i2026

Martin & Co Medway Lettings
161 High Street, Rochester, Kent, ME1 1EH
01634 838700 . medway@martinco.com

01634 838700
<http://www.martinco.com>



Accuracy: References to the Tenure of a Property are based on information supplied by the Seller. The Agent has not had sight of the title documents. A Buyer is advised to obtain verification from their Solicitor. Items shown in photographs including but not limited to carpets, fixtures and fittings are not included unless specifically mentioned within the sales particulars. They may however be available by separate negotiation. Buyers must check the availability of any property and make an appointment to view before embarking on any journey to see a property. No person in the employment of the agent has any authority to make any representation about the property, and accordingly any information given is entirely without responsibility on the part of the agents, sellers(s) or lessors(s). Any property particulars are not an offer or contract, nor form part of one. **Sonic / laser Tape:** Measurements taken using a sonic / laser tape measure may be subject to a small margin of error. **All Measurements:** All Measurements are Approximate. **Services Not tested:** The Agent has not tested any apparatus, equipment, Fixtures and Fittings or services and so cannot verify that they are in working order or fit for the purpose. A Buyer is advised to obtain verification from their Solicitor or Surveyor.

