



Oriel Drive

Barnes, SW13

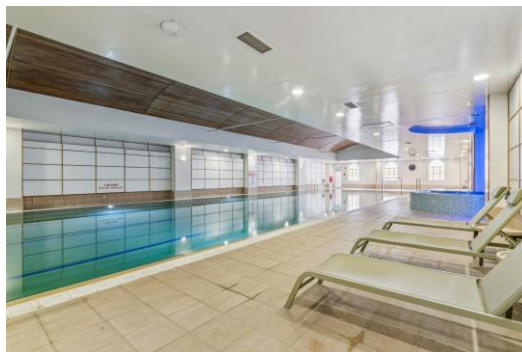
£2,500 per month
(£576.92 per week)

A modern ground floor flat in sought-after Harrods Village, north Barnes. Benefits include a well-equipped residents' gym, swimming pool and sauna, 24-hour concierge, manicured communal gardens and an allocated parking space.

Accommodation comprises a generous and light reception room accessed via grand double doors from the entrance hall, a contemporary fitted kitchen, one good-sized double bedroom with built-in wardrobes and a well-appointed bathroom.

Harrods Village is a gated development close to Hammersmith Bridge and the Thames. Amenities are available on nearby Castelnau, Hammersmith Station is minutes away and there are several local bus routes into Barnes Village and beyond.

CHESTERTONS



Oriel Drive

Barnes, SW13

- Modern Ground Floor Flat
- Natural Light Throughout
- Allocated Parking Space
- Residents' Swimming Pool & Gym
- Near Hammersmith Station



Minimum Term: 6 months
Deposit Required: five weeks rent (£2,884.60)
Local Authority: London Borough of Richmond upon Thames
Council Tax Band: E
EPC Rating: C
Unfurnished

Energy Efficiency Rating		
	Current	Potential
Very energy efficient - lower running costs		
(92+) A		
(81-91) B		
(69-80) C	74	76
(55-68) D		
(39-54) E		
(21-38) F		
(1-20) G		
Not energy efficient - higher running costs		
England, Scotland & Wales		EU Directive 2002/91/EC

Chestertons Barnes Lettings

68-69 Barnes High Street
 Barnes
 London
 SW13 9LD
 lettings.barnes@chestertons.co.uk
 020 8748 7733
chestertons.co.uk

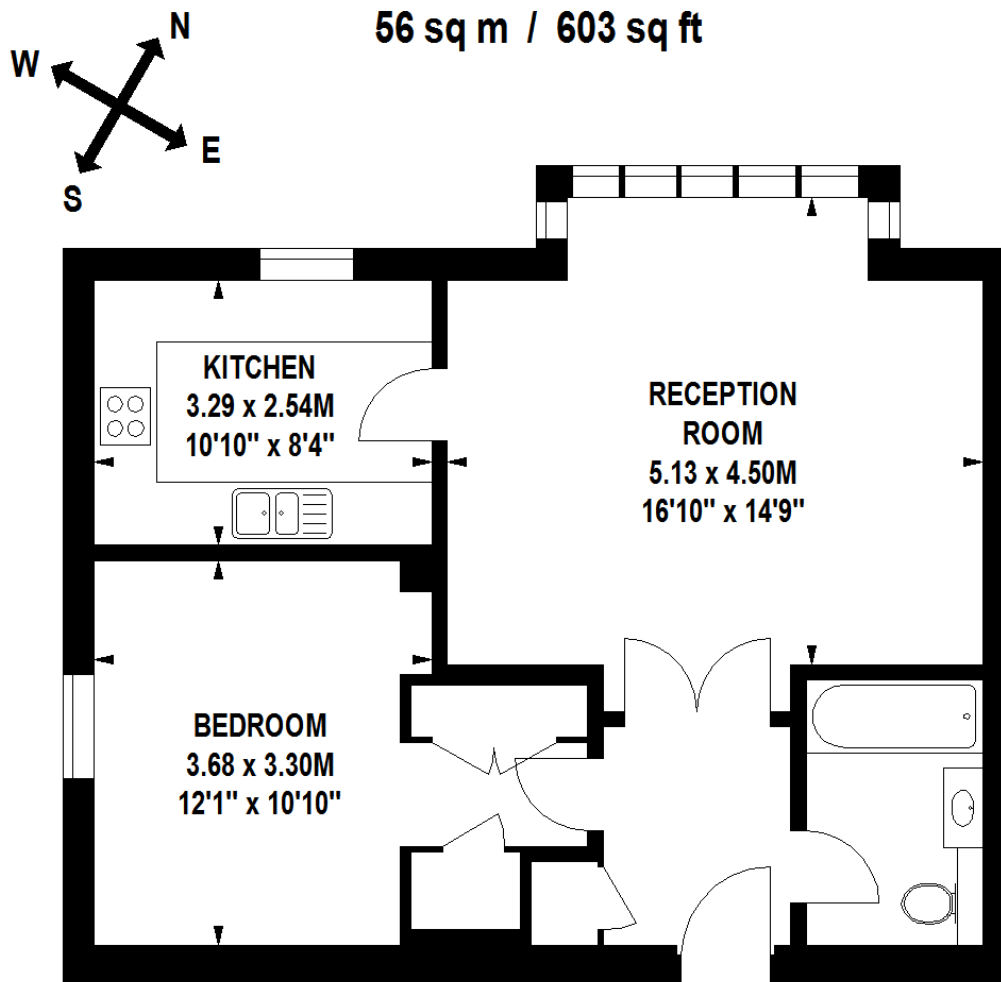
Additional tenant charges apply (fees apply to non-AST tenancies only)

Tenancy Agreement Fee: £300
 References per Tenant/Guarantor: £60
 Inventory Check: Approx. £100-£250 (inc. VAT)
chestertons.co.uk/property-to-rent/applicable-fees

Oriel Drive, Harrods Village, SW13

Approximate gross internal area

56 sq m / 603 sq ft



Ground Floor

Floorplan produced for Chesterton Humberts by Mays Floorplans © . Tel 020 3397 4594

Illustration for identification purposes only, not to scale

All measurements are maximum, and includes wardrobes and window bays where applicable

