

The Chimes, Mill Road, Hethersett, Norwich, Norfolk. NR9 3DR

Offers In Region Of £400,000

3 1 2



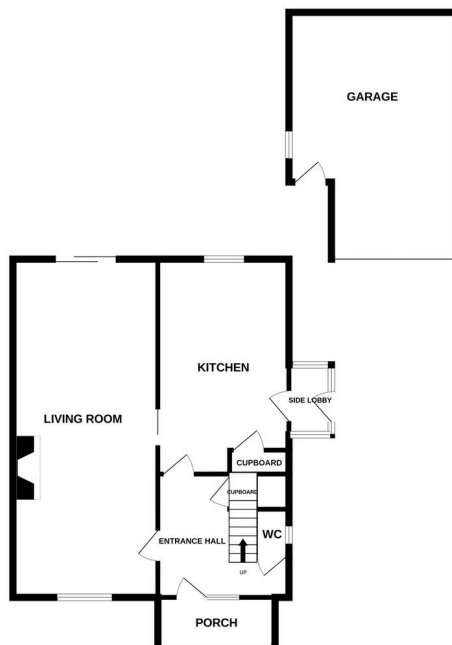
Moneyproperties are delighted to present The Chimes, New Road, Hethersett — offered with no onward chain and vacant possession. This spacious three-bedroom detached home sits on a generous plot measuring approximately 140ft x 45ft and benefits from a large garage/workshop and two storage sheds. The property offers around 1,300 sq ft of living space comprising of entrance hall with cloakroom, 17ft 3in kitchen with side lobby, impressive 27ft 10in living room with patio doors opening into the rear garden. Three well-proportioned double bedrooms and a generous family bathroom, with potential to reconfigure to include an en suite.

Tenure: Freehold EPC: D Council Tax: E

Key Features

- Opportunity to purchase this detached three bedroom house with huge potential
- Offering approximately 1300 sq ft of living space not including garage
- Sitting on a generous plot approximately 140ft x 45ft which allows property to be extended (stpp)
- 13ft 9in x 20ft 4in garage / workshop with pit and electric garage door
- Three double bedrooms and large bathroom that could be split to provide an en suite
- 27ft 10in living room that again could be downsized to provide study or extended kitchen
- Fully secure and enclosed rear garden 60ft x 45ft with garden sheds with electrics 18ft x 8ft
- Ideally placed for the village centre with all its amenities, local village schools and access to main A11
- No forward chain / quick sale possible.
- See our full online listing for further details including flood risk, broadband speed and other material information.

GROUND FLOOR
937 sq.ft. (87.1 sq.m.) approx.



1ST FLOOR
632 sq.ft. (58.7 sq.m.) approx.



TOTAL FLOOR AREA: 1569 sq.ft. (145.8 sq.m.) approx.

Whilst every attempt has been made to ensure the accuracy of the floorplan contained here, measurements of doors, windows, rooms and any other items are approximate and no responsibility is taken for any error, omission or mis-statement. This plan is for illustrative purposes only and should be used as such by any prospective purchaser. The services, systems and appliances shown have not been tested and no guarantee as to their operability or efficiency can be given.
Made with Metropix ©2025