



Guide Price
£325,000

Freehold

3x  1x  1x 

**Hasted Road,
Newington,
Sittingbourne, Kent,
ME9**

OVER 60?

Secure this property
for up to **59% less!**

Wards
Helping you move forwards



Main features

- End of terrace house
- Perfect opportunity to add your own stamp on this home
- Ideal first time buy or buy-to-let investment
- Situated close to local amenities, train line and schools
- Cabin located in your garden can be used as a home office

Accommodation

GROUND FLOOR

Hallway

Cloakroom

Lounge/Diner: 25'7 x 12'5 (7.80m x 3.79m)

Kitchen: 13'0 x 8'2 (3.97m x 2.49m)

FIRST FLOOR

Landing

Bedroom 1: 12'6 x 11'8 (3.81m x 3.56m)

Bedroom 2: 12'7 x 11'3 (3.84m x 3.43m)

Bedroom 3: 9'5 x 7'6 (2.87m x 2.29m)

Bathroom

OUTBUILDING

Room 1 (Used as hobby room)

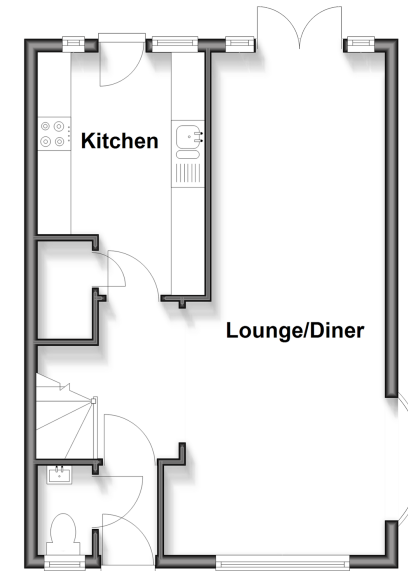
OUTSIDE

Driveway

Rear Garden

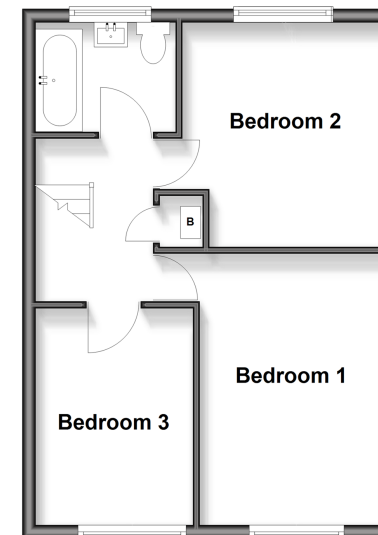
Ground Floor

Approx. 39.3 sq. metres (423.1 sq. feet)



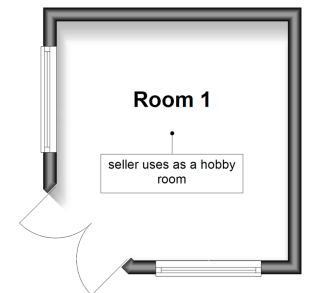
First Floor

Approx. 39.0 sq. metres (420.2 sq. feet)



Outbuilding

Approx. 0.0 sq. metres (0.0 sq. feet)



Call Sittingbourne - 01795 427272 ■ wardsof Kent.co.uk

- Legal advice should be taken to verify fixtures/fittings, planning, alterations and/or lease details
- Appliances & services are untested, dimensions are approximate and floor plans are not to scale
- Through a Homewise Home For Life Plan people aged 60+ can secure this property for up to 50% less, by purchasing a Lifetime Lease



11738939/20251213/SG/MC1