



TO LET



Slough Lane, Kingsbury, NW9

£170,000



- Studio
- Parking
- Garage
- Seperate showeroom
- Leasehold
- Balcony

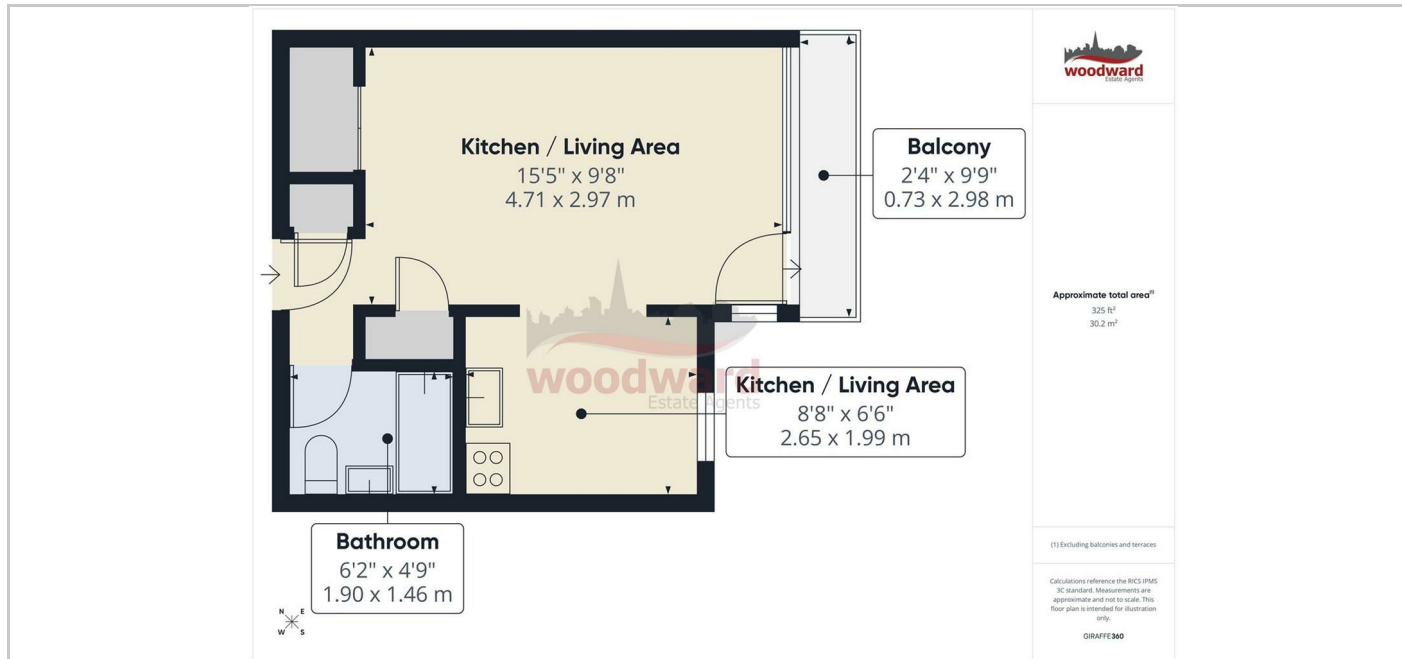
THE PROPERTY

Situated in the heart of Kingsbury, this studio forms part of a unique development in a prominent position on Slough Lane.

Located on a quiet residential street in NW9, this purpose-built studio offers approximately 30sq ft of well-arranged living space. The property, comprises a well-proportioned open-plan bedroom/living area, a modern fitted kitchen, and a contemporary bathroom suite, and laminate flooring throughout.

Further benefits include double-glazed windows, access to communal gardens, parking, and a garage.

Ferndene is conveniently located within half a mile of Kingsbury High Road, offering a range of local shops, restaurants, gyms, bus routes (183, 204 and 324), and the Jubilee Line underground station.



Directions

SITUATION