



Holmwood Road, Ilford, IG3 9XY

Offers In Excess Of £540,000





Offers In Excess Of £540,000

Holmwood Road

Ilford, IG3 9XY

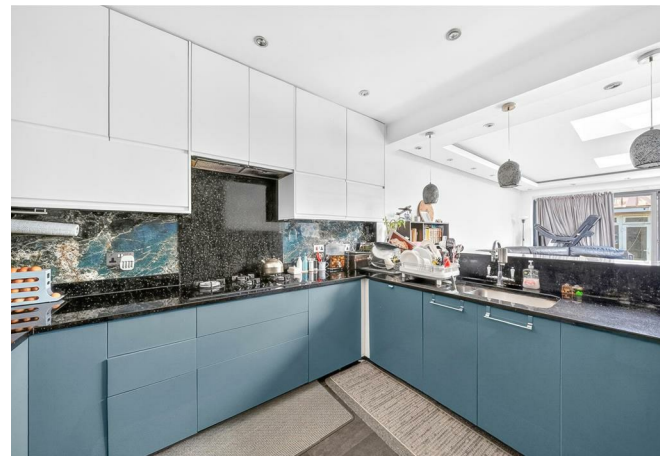
- EPC C
- Lounge
- Three bedrooms
- Kitchen
- Three bathrooms
- Off street parking

Nestled on the charming Holmwood Road in Ilford, this delightful terraced house offers a perfect blend of comfort and convenience. With three/four spacious bedrooms, this property is ideal for families or those seeking extra space for guests or a home office. The well-designed layout includes a welcoming reception room, perfect for entertaining or relaxing after a long day.

The house boasts three bathrooms, ensuring that morning routines are a breeze for everyone in the household. Each bathroom is thoughtfully appointed, providing both style and functionality.

For those with a vehicle, the property includes parking for one car, a valuable feature in this bustling area. The location is well-connected, making it easy to access local amenities, schools, and transport links, ensuring that everything you need is within reach.

This terraced house on Holmwood Road is not just a place to live; it is a home where memories can be made. With its generous living space and prime location, it presents an excellent opportunity for anyone looking to settle in Ilford. Don't miss the chance to make this lovely property your own.



ENTRANCE

RECEPTION ROOM/BEDROOM ONE

13'5" x 12'1" (4.10m x 3.70m)

KITCHEN

11'1" x 10'5" (3.40m x 3.20m)

RECEPTION

20'0" x 16'4" (6.10m x 5.00m)

SHOWER ROOM

6'2" x 3'7" (1.90m x 1.10m)

STAIRS TO FIRST FLOOR

BEDROOM TWO

17'8" x 11'1" (5.40m x 3.40m)

BEDROOM THREE

11'1" x 8'10" (3.40m x 2.70m)

BATHROOM

8'6" x 7'10" (2.60m x 2.40m)

STAIRS TO SECOND FLOOR

BEDROOM FOUR

19'0" x 17'0" (5.80m x 5.20m)

EN-SUITE

7'6" x 3'7" (2.30m x 1.10m)



OUTBUILDING
EXTERIOR
AGENTS NOTE

15'8" x 5'6" (4.80m x 1.70m)
20' (6.10m)

Directions





