



23 Ivy Close, Westergate, PO20 3RF

£425,000 Freehold



3 Bedrooms



2 Bathrooms



1 Reception Room

SW

Sims Williams

Key Features

- Extended Detached Bungalow
- Popular Westergate Location
- 3 Good Size Bedrooms
- En Suite To Guest Room
- Open Plan Living Space
- Kitchen/Dining/Sitting Room
- West Facing Rear Garden
- Driveway Parking
- Single Garage

EPC Rating

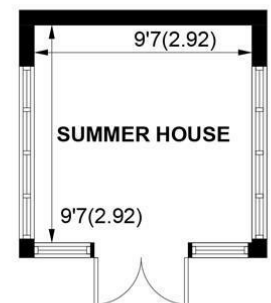
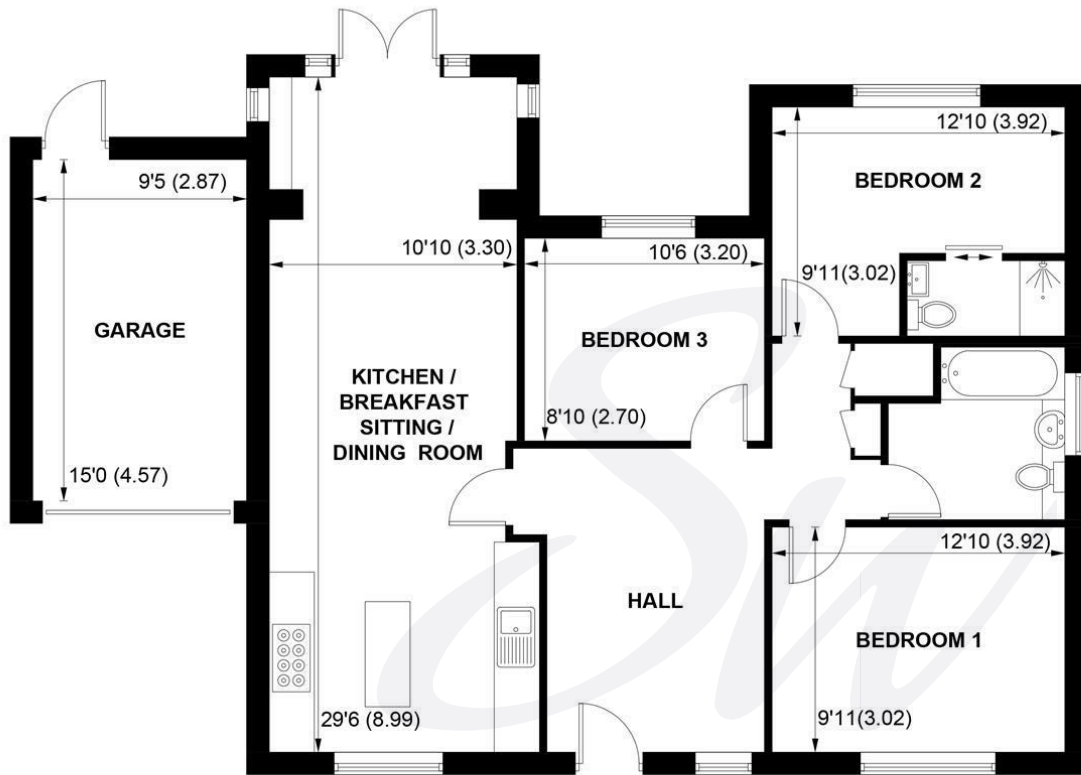
Current = C
Potential = B

Council Tax Band

Band = C

Tenure - Freehold





(NOT SHOWN IN ACTUAL LOCATION / ORIENTATION)

APPROXIMATE GROSS INTERNAL AREA = 935 SQ FT / 86.9 SQ M
GARAGE / SUMMER HOUSE = 231 SQ FT / 21.5 SQ M
TOTAL = 1166 SQ FT / 108.4 SQ M

NOT TO SCALE (For illustrative purposes only as defined by RICS Code of Measuring Practice) 2026 ©
Produced for Sims Williams



simswilliams.co.uk

CHICHESTER

8-9 Southgate

Sales 01243 787868

Lettings 01243 836055

chichester@simswilliams.co.uk

WALBERTON

5 Maple Parade

Sales 01243 551368

Lettings 01243 836055

walberton@simswilliams.co.uk

ARUNDEL

8a High Street

Sales 01903 885678

Lettings 01903 881133

arundel@simswilliams.co.uk

BOGNOR REGIS

46 High Street

Sales 01243 862626

Lettings 01243 836055

bognor-regis@simswilliams.co.uk

Viewing Strictly by arrangement via the vendor's agent Sims Williams 01243 551368. These particulars are believed to be correct but their accuracy is not guaranteed and they do not form part of any contract.