



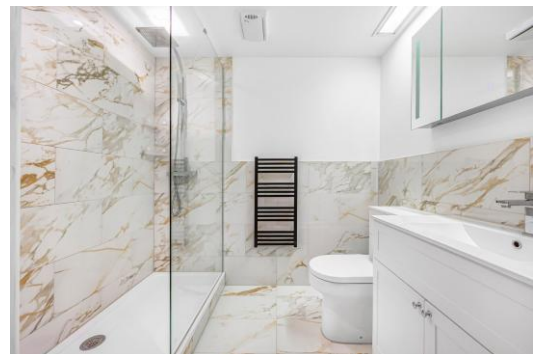
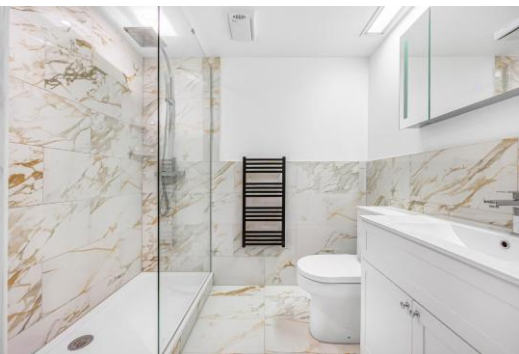
Naxos Building

4 Hutchings Street, E14

Asking Price £425,000

Stunning two bed, one bath apartment in Naxos Building, a modern riverside development in Canary Wharf with 24hr concierge, gym, jacuzzi, sauna & steam room.

CHESTERTONS



Naxos Building

4 Hutchings Street, E14

- Modern design with high-quality finishes
- Spectacular views of London skyline and River Thames
- Spacious Living Area
- Fully-fitted Kitchen
- Two Double Bedrooms | One Bathroom
- Balcony with Expansive Views Across London
- Access to Gym and Concierge Services
- Proximity to Canary Wharf's Financial District



Spanning approximately, 743sq ft on the 4th floor of the highly sought-after Naxos Building, with stunning, far-reaching views over the London and the River Thames.

The Naxos Building boasts an exceptional location very close to Canary Wharf's business district, Jubilee Line station & subterranean shopping centre and offers residents a 24 hour concierge, & on-site facilities. The building possesses a satisfactory EWS1 form and the apartment is offered chain-free.

Excellent transport connections are available via Heron Quays DLR 0.7 mile, Canary Wharf London Underground 0.7 mile away.

Tenure: Leasehold 975 years approx. remaining.

Service Charge: £5,062 approx. pa.

Ground Rent: £1,155 p/a

Local Authority: Tower Hamlets

Council Tax Band: F

Score	Energy rating	Current	Potential
92+	A		
81-91	B		
69-80	C	75 C	85 B
55-68	D		
39-54	E		
21-38	F		
1-20	G		

Chestertons Canary Wharf & Greenwich Sales

Harbour Island

28 Harbour Exchange Square

London

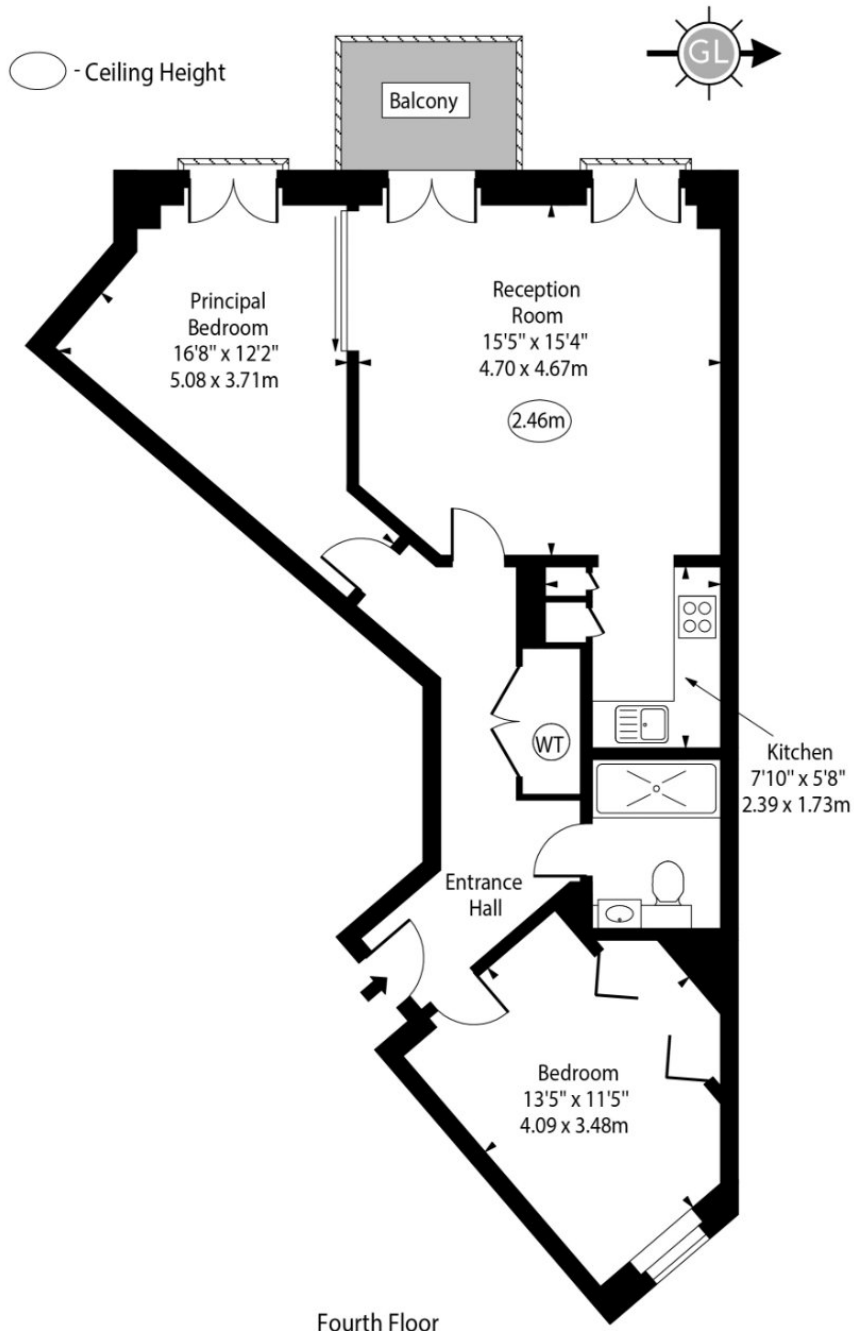
E14 9GE

canarywharf@chestertons.co.uk

020 7510 8300

chestertons.co.uk

Naxos Building,
Hutchings Street, E14



Approx Gross Internal Area 743 Sq Ft - 69.02 Sq M

Every attempt has been made to ensure the accuracy of the floor plan shown. However, all measurements, fixtures, fittings, and data shown are approximate interpretations and for illustrative purposes only. Measured according to the RICS. Not To Scale.

www.goldlens.co.uk
Ref. No. 028616.2K