

Property ref: 153742

Edward Place, Reading, RG1 4NY

£1,500 PCM

HASLAMs
Lettings



This spacious two bedroom, first floor apartment is conveniently located just East of Reading town centre with great access to the M4 motorway via A329M and business parks at Thames Valley and Winnersh. Everything you need including convenient stores, pubs and restaurants are on your doorstep and you are only a 10-15 minute walk to Reading town centre and Reading station. Reading Borough Council tax band C.

Available 02/04/2026

- Two double bedrooms; Modern integrated kitchen
- Bathroom with shower over bath
- Spacious lounge-diner
- EPC rating C; Electric heating
- Off road parking & garage
- Furnished; Managed by HASLAMs

*Fees For Assured Shorthold Tenancies: when you rent a property from us you will be required to pay a sum equivalent to one weeks' rent for a holding deposit. Upon successful application, this amount will be off set against your first months' rent. You will also be required to pay a security deposit equivalent to 5 weeks' rent which will be held and protected in line with Deposit legislation. For more information about our fees please visit: www.haslams.net
Fees for all other tenancies (Non Housing Act Tenancies / Company Lets): when you rent a property from us we will charge you a one-off fee per property. This charge is the equivalent of 15 days of the monthly rental charge (+VAT) with a minimum fee of £450 (inc.VAT) up to a maximum of £650 (inc.VAT). Other fees may apply depending on your circumstances.

0118 960 1055

lettings@haslams.net www.haslams.net

Haslams Estate Agents Ltd, 159 Friar Street, Reading, Berkshire, RG1 1HE

Water supply: Mains

Drainage info: Mains

Electricity supply: Mains

Broadband/Mobile Info: Connections available. For an indication of specific speeds and supply of Broadband and Mobile, we advise applicants go to the Ofcom website Broadband and Mobile Coverage Checker.

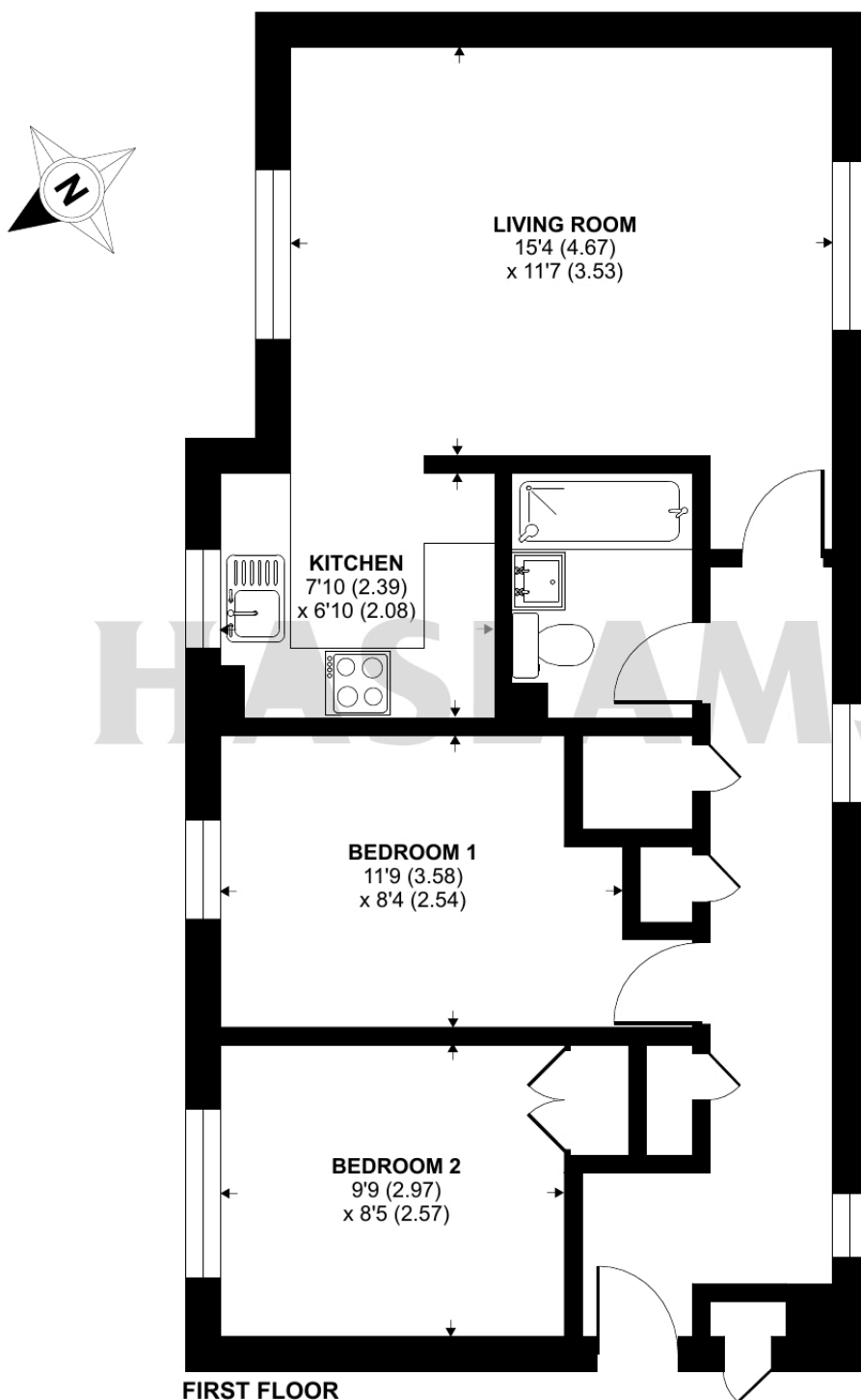




Edward Place, Kings Road, Reading, RG1

Approximate Area = 618 sq ft / 57.4 sq m

For identification only - Not to scale

**Certified
Property
Measurer**

Floor plan produced in accordance with RICS Property Measurement Standards incorporating International Property Measurement Standards (IPMS2 Residential). © n1cheom 2023.
Produced for Haslamss. REF: 1027550