



Rosebank Road, W7

£595,000

One of four newly converted two bedroom luxury apartments available to the market. This two bedroom, two bathroom property has been finished to the highest standard throughout with bespoke fixtures and fittings and the additional bonus of air conditioning. The property has its own private courtyard, a share of freehold with 999 year lease will be granted on completion and the opportunity to acquire off-street parking.

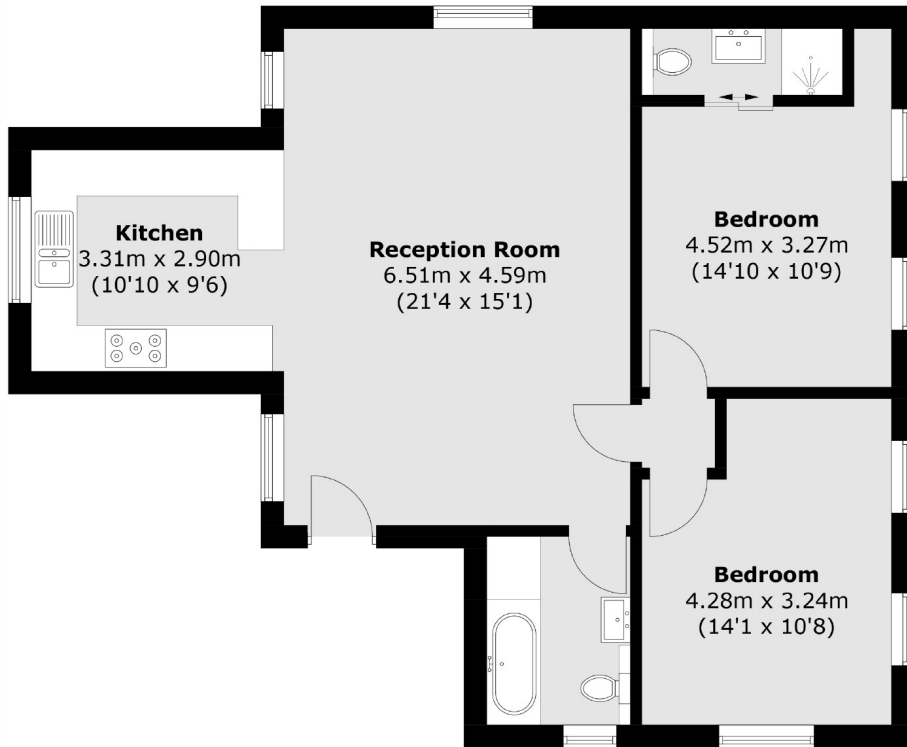


Spanning the entirety of the first floor of this new development, this two bedroom, two bathroom apartment is the culmination of two Edwardian houses merged together, allowing a sense of lateral space and an abundance of natural light. The kitchen has a high-end finish with granite countertops and Bosch appliances. There is the additional option of off-street parking (additional cost). The attention to detail, bespoke fixtures and fittings and contemporary design are a must see, with added touches such as air conditioning providing a luxurious living space.

Situated within this exclusive development in the heart of Olde Hanwell on a quiet residential street, this property is ideally located for both Boston Manor (Piccadilly line) and Hanwell Station's Elizabeth line. Also a moments walk from the Grand Union Canal and the Fox Inn pub.

- Two Double Bedrooms • Two Bathrooms • Brand New Property •
 - Air Conditioning • Luxury Apartment • Private Courtyard •
-





Total area (approx.): 75.4 sq. m (811.6 sq. ft)

Robertson Smith & Kempson Hanwell Sales
69 Greenford Avenue,
London, W7 1LL
020 8566 2339
hanwellsales@robertsonsmithandkempson.co.uk

Energy Rating: C. We aim to make our particulars both accurate and reliable. However they are not guaranteed; nor do they form part of an offer or contract. If you require clarification on any points then please contact us, especially if you're traveling some distance to view. Please note that appliances and heating systems have not been tested and therefore no warranties can be given as to their good working order.