



## **11 Silvercroft Street, Manchester, M15 4ZR**

**£346 Per Week**

23RD FLOOR ONE BEDROOM LUXURY 'FURNISHED' APARTMENT

THREE60, 11 SILVERCROFT STREET M15

SET OVER 580 SQUARE FEET AND ENJOYING AMAZING VIEWS

MANCHESTER'S 1ST CYLINDRICAL SKYSCRAPER OFFERING PANORAMIC VIEWS

HOTEL STYLE AMENITIES INC: GYM, LOUNGE, WORKSPACES AND ROOFTOP TERRACE

FURNISHED  
AVAILABLE FROM 29.07.2026

- 23RD FLOOR APARTMENT
- COMES FURNISHED
- 0.2 MILES FROM DEANS GATE TRAIN STATION
- AVAILABLE FROM 29.07.2026
- THREE60 SILVERCROFT STREET M15
- FANTASTIC VIEWS
- THREE60 IS A CYLINDRICAL SKYSCRAPER WITH PANORAMIC VIEWS
- LATEST "RENAKER" LUXURY DEVELOPMENT
- HOTEL STYLE FACILITIES INC GYM, CONCIERGE, ROOF TOP GARDENS
- VERY LARGE ONE BEDROOM SET OVER 580 SQ FEET

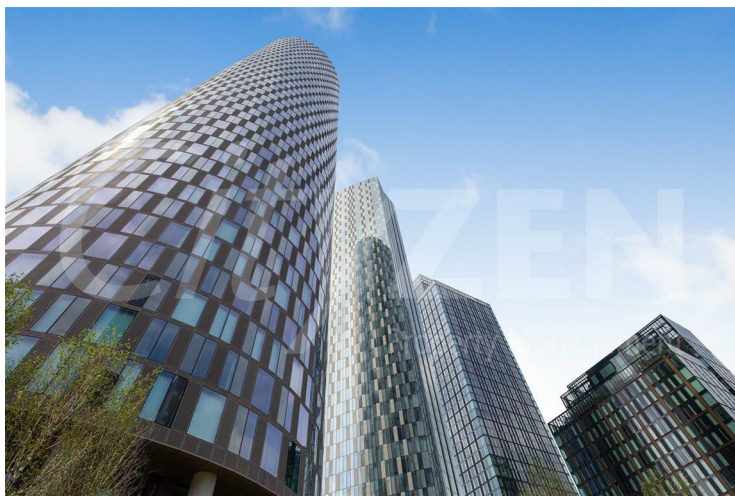
11 Silvercroft Street, Manchester, M15 4ZR



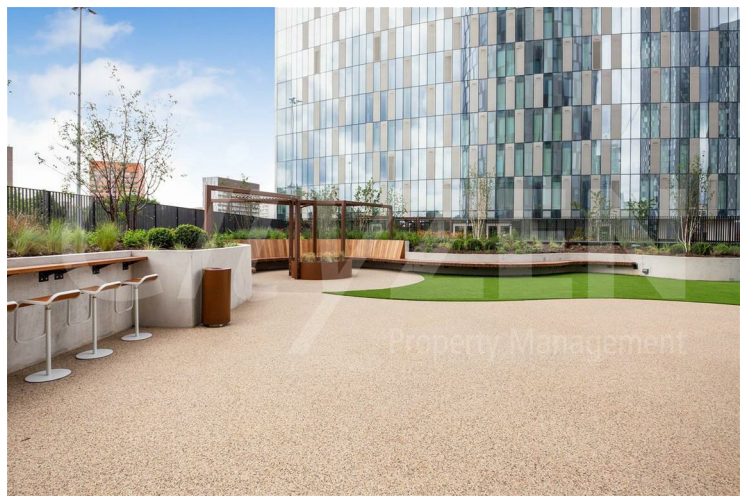
THREE60



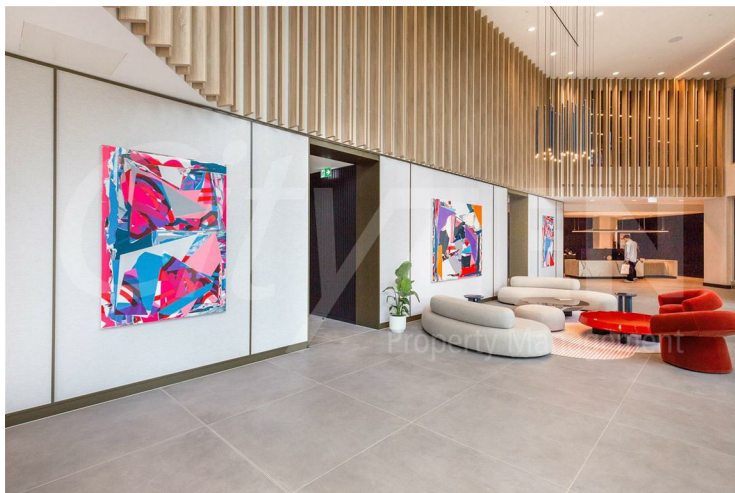
RESIDENTS LOUNGE



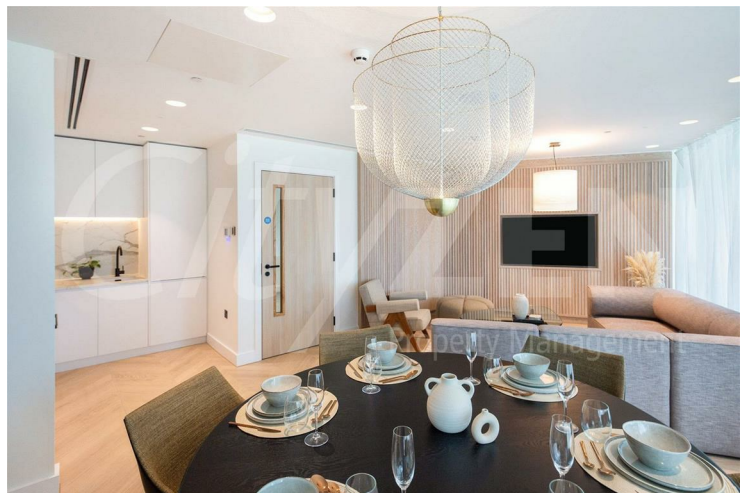
THREE60



THREE60



LOBBY



RESIDENTS LOUNGE

11 Silvercroft Street, Manchester, M15 4ZR



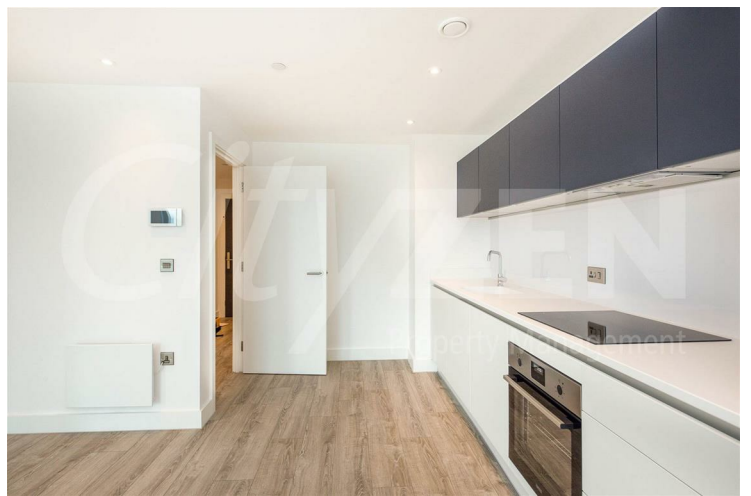
KITCHEN



RECEPTION



KITCHEN



KITCHEN



RECEPTION



KITCHEN

11 Silvercroft Street, Manchester, M15 4ZR



KITCHEN



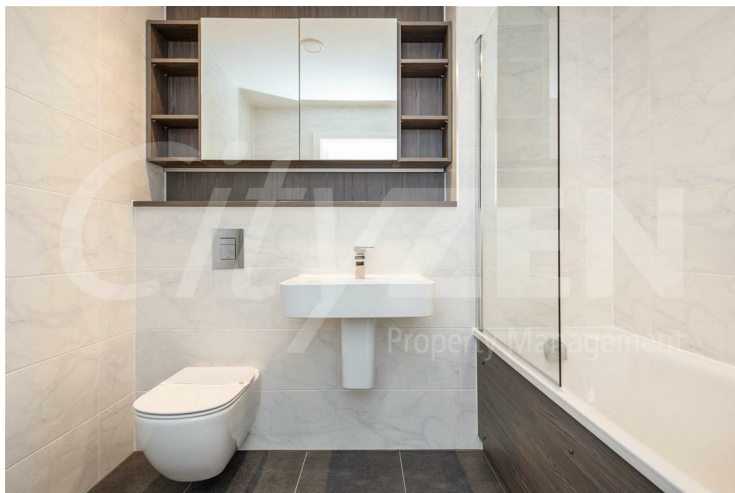
HALLWAY



BATHROOM



BEDROOM



BATHROOM



BEDROOM

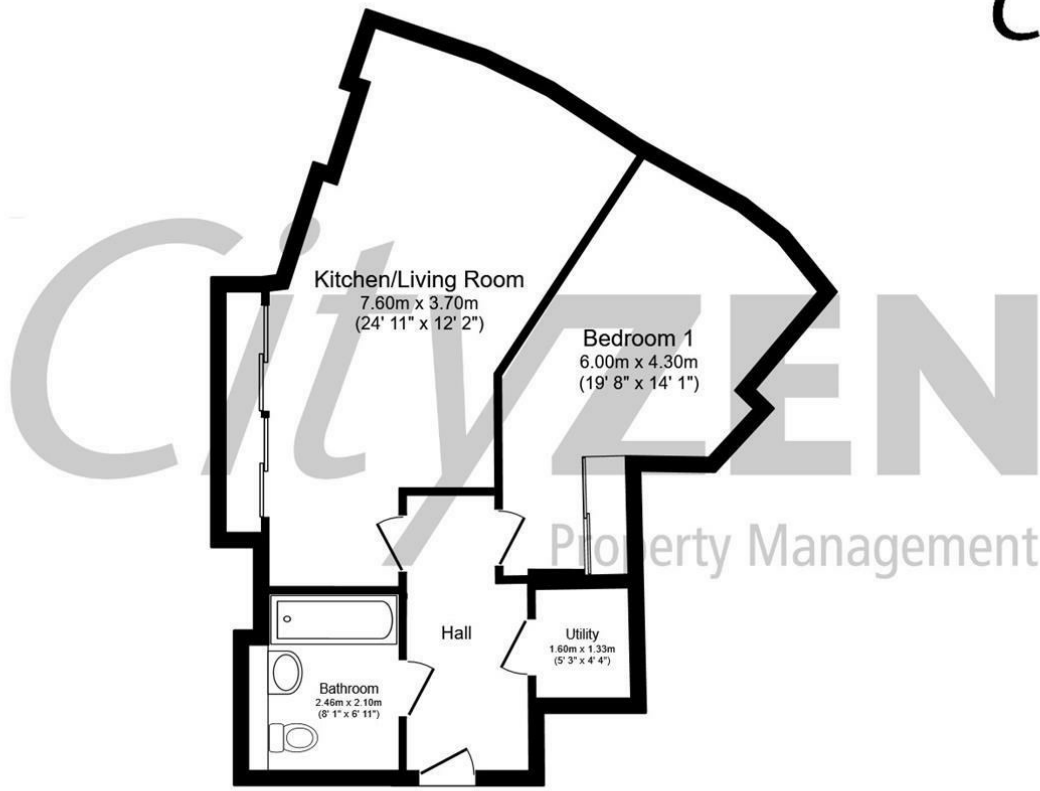
**11 Silvercroft Street, Manchester, M15 4ZR**



**BEDROOM**



**BEDROOM**



Total floor area 54.0 m<sup>2</sup> (581 sq.ft.) approx

This floor plan is for illustrative purposes only. It is not drawn to scale. Any measurements, floor areas (including any total floor area), openings and orientation are approximate. No details are guaranteed, they cannot be relied upon for any purpose and they do not form part of any agreement. No liability is taken for any error, omission or misstatement. A party must rely upon its own inspection(s). Powered by www.focalagent.com



Energy Efficiency Rating		
	Current	Potential
Very energy efficient - lower running costs		
(92 plus) <b>A</b>		
(81-91) <b>B</b>	84	84
(69-80) <b>C</b>		
(55-68) <b>D</b>		
(39-54) <b>E</b>		
(21-38) <b>F</b>		
(1-20) <b>G</b>		
Not energy efficient - higher running costs		
EU Directive 2002/91/EC		
Environmental Impact (CO <sub>2</sub> ) Rating		
	Current	Potential
Very environmentally friendly - lower CO <sub>2</sub> emissions		
(92 plus) <b>A</b>		
(81-91) <b>B</b>		
(69-80) <b>C</b>		
(55-68) <b>D</b>		
(39-54) <b>E</b>		
(21-38) <b>F</b>		
(1-20) <b>G</b>		
Not environmentally friendly - higher CO <sub>2</sub> emissions		
EU Directive 2002/91/EC		

We have prepared these property particulars as a general guide to a broad description of the property. They are not intended to constitute part of an offer or contract. We have not carried out a structural survey and the services, appliances and specific fittings have not been tested. All photographs, measurements, floorplans and distances referred to are given as a guide only and should not be relied upon for the purchase of carpets or any other fixtures or fittings. Lease details, service charges and ground rent (where applicable) and council tax are given as a guide only and should be checked and confirmed by your Solicitor prior to exchange of contracts.