



RESIDE
MANCHESTER



Eliza Yard 125 Jersey Street
Ancoats, Manchester, M4 6HB

Asking Price £299,950



Eliza Yard 125 Jersey Street

Ancoats, Manchester, M4 6HB

Eliza Yard is an exciting new development in the heart of Ancoats.

The whole development is now build complete with immediate occupation.

This striking collection of high-specification 1, 2, and 3-bedroom apartments is part of Manchester Life's latest phase of regeneration, perfectly positioned in one of the city's most vibrant and creative neighbourhoods.

Designed for modern urban living, each apartment will feature contemporary interiors, spacious layouts, and premium finishes throughout. Residents will benefit from beautifully landscaped communal spaces, cycle storage, and lift access to all floors.

Eliza Yard is ready for occupation and offers a rare opportunity to purchase in one of Manchester's most desirable postcodes, just a short walk from Cutting Room Square, New Islington Marina, and the Northern Quarter.

Eliza Yard

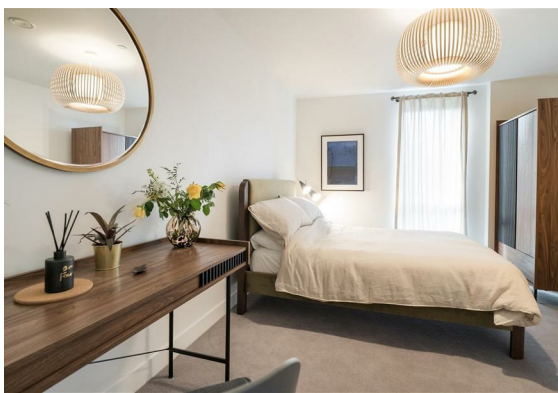
Eliza Yard is central to Ancoats' next chapter — bringing new homes, more local businesses, the Ancoats Mobility Hub, and a transformed Ancoats Green, all while staying true to the area's distinct character, history, and community spirit.

Beautifully crafted apartments for sale

Set over eight levels, 22 considered apartment types have been created to offer a range of layouts and make the most of natural light and space.

Disclaimer

The particulars in this website have been produced in good faith, are set out as a general guide and do not constitute the whole



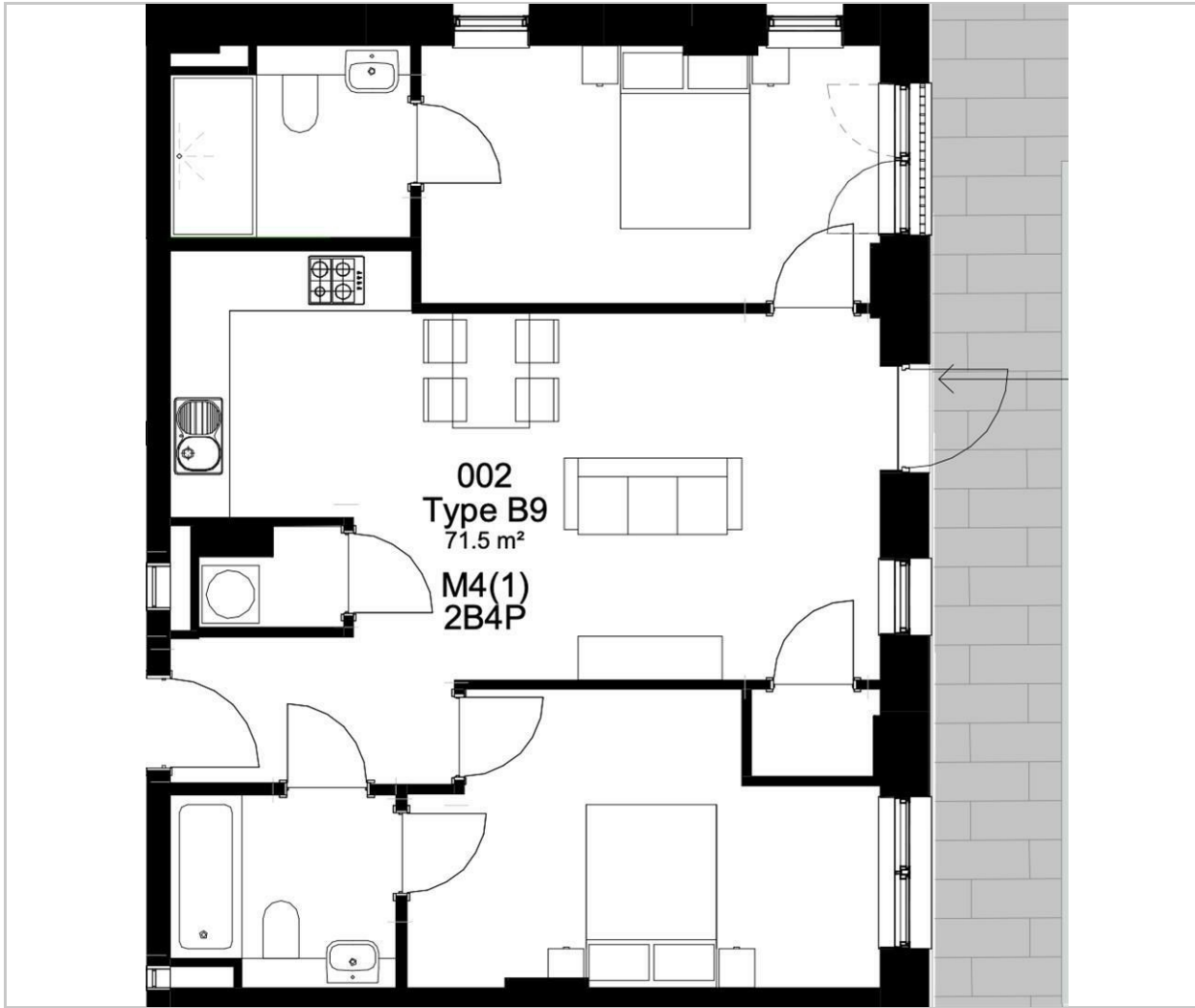


or part of any contract. All liability, in negligence or otherwise, arising from the use of the particulars is hereby excluded. All images used are for illustrative purposes only.

- Ready For Immediate Occupation
- Brand New Manchester Life Development
- Right In The Heart Of Ancoats
- One Beds Also Available From £235,000
- Two And Three Beds Also Available
- Concierge Service 7 Days A Week
- Private Residents' Courtyard
- Pets Welcome
- Most Apartments Include A Juliette Balcony
- EPC Rating B



Floor Plan



Viewing

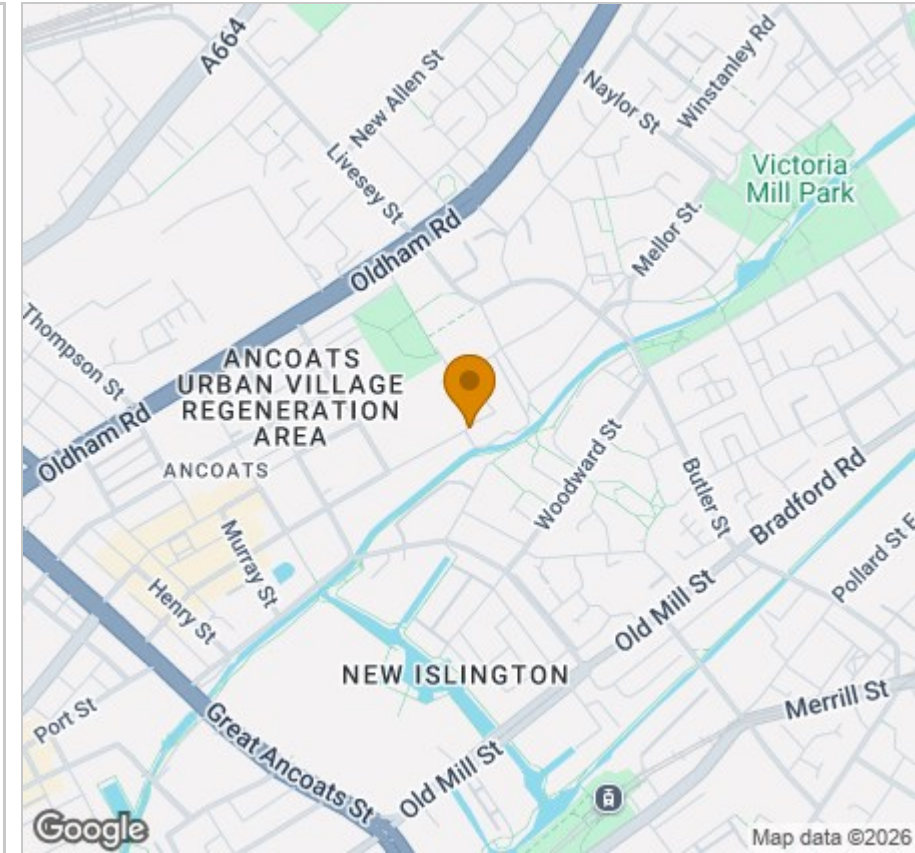
Please contact our Reside Manchester Office on 0161 837 2840 if you wish to arrange a viewing appointment for this property or require further information.

These particulars, whilst believed to be accurate are set out as a general outline only for guidance and do not constitute any part of an offer or contract. Intending purchasers should not rely on them as statements of representation of fact, but must satisfy themselves by inspection or otherwise as to their accuracy. No person in this firm's employment has the authority to make or give any representation or warranty in respect of the property.

4 Jordan Street, Manchester, Greater Manchester, M15 4PY

Tel: 0161 837 2840 Email: info@residemanchester.com www.reside-property.com

Area Map



Energy Efficiency Graph

